



Software Download and Installation Instructions

This document provides instructions for installing the ShopStream Connect™ software on your personal computer (PC).

Minimum Requirements

IMPORTANT:

If your PC does not meet the minimum requirements, do not attempt to install the ShopStream Connect software.

Before installing the software, verify the following requirements:

- PC with the following minimum system requirements:
 - System Properties:
 - Operating system—Microsoft Windows 2000 Service Pack 4, Windows XP, or Vista. The system must be upgraded to Microsoft .NET Framework Version 2.
 - Processor—Pentium 4 or later, or equivalent
 - Memory—256 MB minimum, 512 MB recommended
 - Hard Drive—50 MB free space
 - CD-ROM, DVD, or DVD-ROM drive
 - USB 2.0 or later
 - Internet Explorer 6.0 or higher
 - Internet connection for updates
- USB cables:
 - Type mini A cable for ETHOS™, MODIS™, and VantagePRO™
 - Type A/B cable for SOLUS™
- Adobe Reader software (free download at www.adobe.com/products/reader)
- ShopStream Connect software (free download at software.snapon.com)

Verifying PC System Properties

Follow the procedures below to check your PC system properties and to determine how much free space is available on your hard drive.



To check your PC system properties:

- On the Desktop, right-click **My Computer** and select **Properties**.
The **System Properties** dialog box displays with your system information (Figure 1).

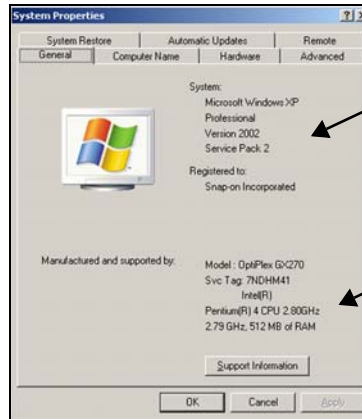


Figure 1 Windows XP System Properties dialog box



To check PC hard drive free space:

1. On the Desktop, double-click **My Computer**.
2. Select **View > Details**.

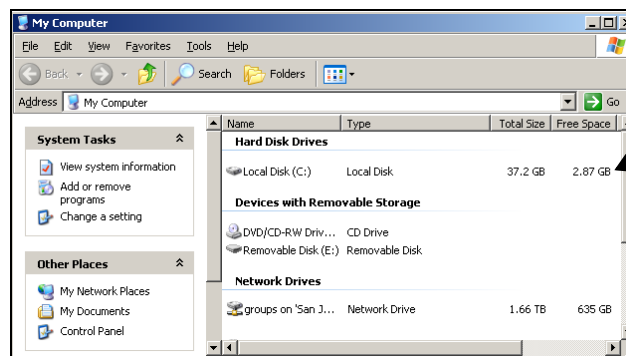


Figure 2 Sample PC hard drive free space details

Downloading the Software

Follow the procedure below to download the ShopStream Connect software.



To download the software:

1. From your PC, using your Internet browser, go to **software.snapon.com**.
2. Locate the ShopStream Connect software download.
3. Follow the on-screen instructions.

Installing the Software

Follow the procedures below to install the ShopStream Connect software onto your PC.



To install the ShopStream Connect software:

1. Locate the ShopStream Connect software installer and double-click **ShopStreamConnect.exe**.
2. When the welcome screen displays (Figure 3), press **Next**.

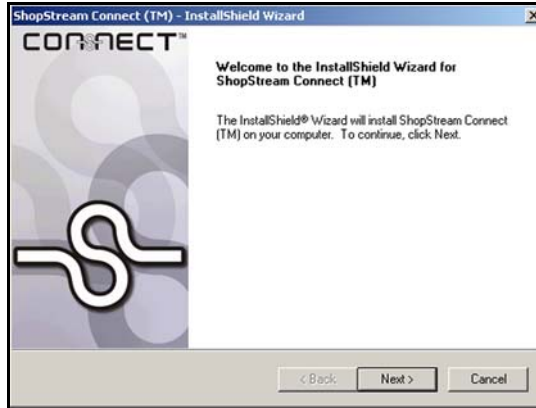


Figure 3 Sample Welcome screen

The License Agreement screen displays (Figure 4).

3. Select **I accept the terms of the license agreement** and press **Next**.



Figure 4 Sample License Agreement screen

The Choose Destination Location screen displays (Figure 5).

4. Press **Next**.

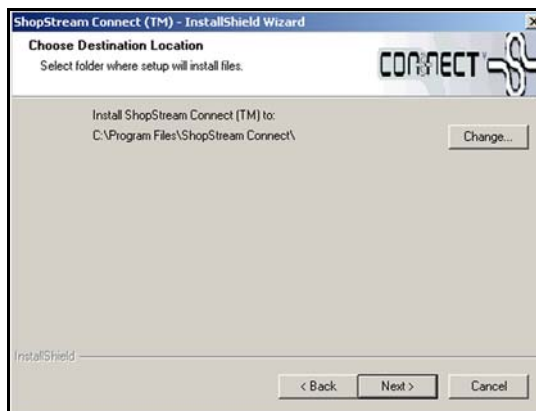


Figure 5 Sample Choose Destination screen

The Ready to Install the Program screen displays (Figure 6).

5. Press **Install**.

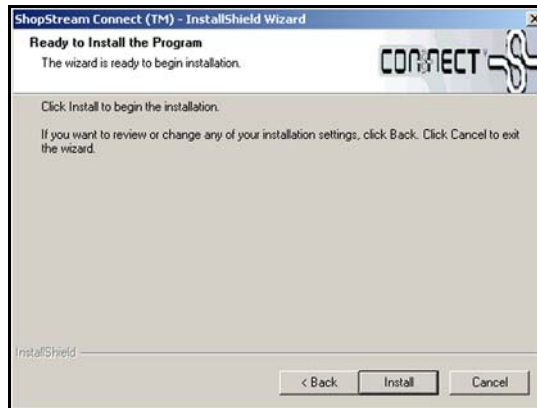


Figure 6 Sample Ready to Install Program screen

The Setup Status screen tracks progress as the program installs (Figure 7).

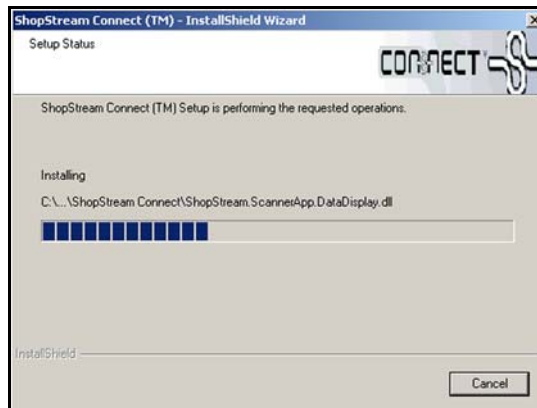


Figure 7 Sample Setup Status screen

6. When the Complete screen displays, press **Finish** (Figure 8).

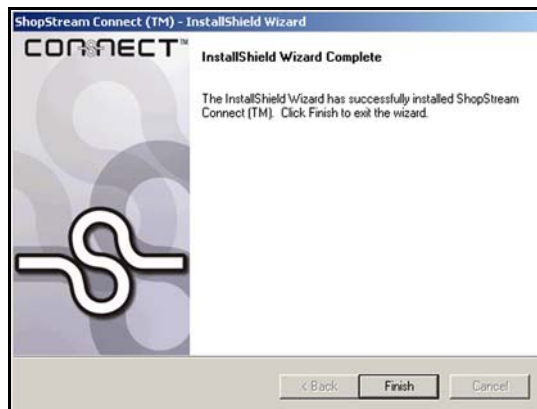


Figure 8 Sample Complete screen

A new PCLink shortcut icon is added to your desktop, double-click the icon to launch the ShopStream Connect software.