

S N A P - O N I N D U S T R I A L T O O L S

STATIONARY STORAGE

Complete Product & Design Guide

*The Complete System For Tool Storage,
Organization, Control, Security and Support*

Snap-on

STATIONARY

THE SYSTEM AT A GLANCE

Invest in the system options that can grow with your ever-changing needs. Only Snap-on provides a complete solution – industry-leading tools and tool storage products, advanced organization programs, and

state-of-the-art access control systems – all brought together by our worldwide support team.



SECURITY

Keyless Entry

- Badge activated system gives you total control over access, when tool boxes are used and by whom
- System records box entry by user, date and time
- Fewer problems with lost or stolen tools
- No keys, no worries



CONTROL

Snap-on Asset Management Software

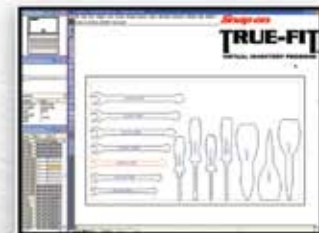
- Total accountability
- Trackability
- Easy to use
- Software that talks
- Visual verification on item issue and return
- Organize one or hundreds of tool cribs



SERVICE AND SUPPORT

Snap-on Solutioneers

- Real people – real solutions
- Knowledgeable, experienced professionals
- There when you need them, on-site, on the job, from design to after-the-sale service
- Keeping your system working reliably, productively, day in and day out



PRODUCTIVITY

The Right Tool For The Job

- The broadest selection of tools in the world
- The right tool for the right job
- Integrated user safety
- Access the latest innovations in tooling

ORGANIZATION

Tru-Fit™ Tool Control System

- Increase productivity with the Tru-Fit System
- Multi-level error checking that prevents foam and silhouette errors
- Develop custom kits for specific tasks
- Every item organized, visible, and accounted for

Call your Snap-on Industrial sales representative for additional information.

YOU DIDN'T BUILD YOUR REPUTATION BY GOING FOR SECOND BEST. NEITHER DID WE.

Snap-on storage systems work better and look better. Every component is perfectly matched, completely integrated, right down to the color-matched, everyday-tough paint.

The Look Of Leadership

The total system – interchangeable base cabinets, shelf units, peg-board back panels, overhead storage units and work/desk surfaces. Hundreds of accessories, from custom tool control layouts and drawer dividers to peg-board rails and hooks. They all fit and look great.



Each component is fully submersed when washed, cleaned, rinsed, and pre-coated as part of our process.



Our laboratory torture tests simulate years of abuse in a matter of hours. It's another way to ensure our products last longer and perform better.



Our powder coat is electrostatically applied using multiple head automated guns.

Call your Snap-on Industrial sales representative for additional information.



- Heavy-duty ball-bearing drawer slides, with pull forward quick disconnects, can be doubled on drawers 4" and deeper to double the load rating (standard on Extra Wide Drawers). Drawers can be fully extended to provide easy access and maximum tool visibility.



- Drawers have extra deep pulls, rolled edges for added strength and easier use, and full height for maximum capacity.



- Exclusive Lock 'n Roll® patented feature prevents drawers from drifting open.



- Spot welds every 3"-4" ensure a strong, solid unit. No one else comes close to this many welds.
- Locks with interchangeable core for peace of mind and easier keying.
- Keyless entry system for maximum control.

CUSTOM SOLUTIONS MADE EASY

Interactive Website

A powerful tool that can help you build your own custom installation quickly and easily – right from your own computer. And the possibilities are virtually unlimited.

Simply choose components based on capacity and functionality. You can create different configurations, weigh the options and floor plans, compare capacities.

And arrive at your own perfectly matched Snap-on Stationary Storage System. For details, visit:

www.StationaryStorage.Snapon.com



Create a custom workspace based on your needs.

Just “Drag and Drop.” Easy user interface lets you select specific products with a single mouse click. Evaluate product specifications and then drag the product image onto your workspace. The right system – fast and efficient.

**GETTING IT RIGHT.
RIGHT FROM THE START.**

Your Snap-on Solutioneer is an incredible resource. And the best time to bring him in is during the earliest planning. It's our way of ensuring that the custom solution matches your needs. Perfectly.



THE POWER OF THE SYSTEM

Improve Productivity And Reduce Cost

There's a connection between your tools, storage system, and organization, which impacts your overall workflow. And nobody understands it better than Snap-on. Snap-on offers industrial strength storage and productivity solutions to make you leaner, more efficient, more productive – with space, manpower and tools fully utilized.

You spend less time looking for tools. You reduce the losses from misplaced or stolen tools. You reduce process bottlenecks. And you keep the work flowing. There's no quicker way to become lean.

A world-class work environment. And a definitive statement about quality, productivity and leadership that boosts employee pride and customer confidence.

And your Snap-on Solutioneer has the experience and know how to make it all work – both today and tomorrow.



STORAGE

BASE STORAGE SOLUTIONS

A complete selection of base cabinets for complete design flexibility. Choose from single, double and triple bank configurations. All base units come standard with bottom skids for forklift access and 4" flat black kick plates. And best of all, everything, top to bottom, is Snap-on.



Single Bank KRS756

Width: 35.68" Height: 36.82" Depth: 24.09"
Case height: 32.89"



Double Bank KRS7022

Width: 54.28" Height: 36.82" Depth: 29.09"
Case height: 32.89"



Double Bank KRS722

Width: 54.28" Height: 36.82" Depth: 24.09"
Case height: 32.89"



Triple Bank KRS7023

Width: 72.87" Height: 36.82" Depth: 29.09"
Case height: 32.89"

Call your Snap-on Industrial sales representative for additional information.

STATIONARY

BASE STORAGE SOLUTIONS



Double Bank KRS1022

Width: 54.28" Height: 41.50" Depth: 29.09"
Case height: 37.31"



Double Bank Work Center KRS1022WC

Width: 54.28" Height: 64.00" Depth: 29.09"
Case height: 37.31"



DOUBLE BANK KRS1032

Width: 72.87" Height: 41.50" Depth: 29.09"
Case height: 37.31"



Triple Bank KRS1023

Width: 72.87" Height: 41.50" Depth: 29.09"
Case height: 37.31"

STATIONARY STORAGE SYSTEM

STORAGE



Single Bank KRS1056

Width: 35.68" Height: 41.50" Depth: 29.09"
Case height: 37.31"



Single Bank KRS1501

Width: 35.68" Height: 54.60" Depth: 29.09"
Case height: 50.67"



Double Bank KRS1502

Width: 54.28" Height: 54.60" Depth: 29.09"
Case height: 50.67"



Single Bank KRS1502W

Width: 54.28" Height: 54.60" Depth: 29.09"
Case height: 50.67"

Call your Snap-on Industrial sales representative for additional information.





BULK STORAGE SOLUTIONS

24" Wall Mounted Overhead

KRS2416 (three overheads shown with optional **KRS2416HD** Angle Hoods)
Width: 24.00" Height: 19.70" Depth: 18.00"

36" Wall Mounted Overhead

KRS3616 (not shown)
Width: 36.00"

48" Wall Mounted Overhead

KRS4816 (not shown)
Width: 48.00"



18" Bulk Storage

KRS1815 (not shown)
Width: 18.00" Height: 36.82" Depth: 24.00"
Case height: 32.89"

24" Bulk Storage

KRS2415 (shown above left)
Width: 24.00"

48" Bulk Storage w/2 Doors

KRS4815 (shown above left)
Width: 48.00"

72" Bulk Storage w/4 Doors

KRS7215 (shown left)
Width: 73.50"



BEYOND BASIC

Have a special need? Snap-on has the answer. Our innovative Docker Locker™ allows technicians to bring their tools to the job and secure them overnight. Our under-bench cart port provides safe, easy overnight tool storage for your technicians.



24" Computer Cabinet

KRS2413L

Left Hand Door
Width: 24.00"
Height: 36.82"
Depth: 24.00"
Case height: 32.89"

KRS2413R (not shown)
Right Hand Door



All docker lockers include tool cart KR7088A

Docker Locker

For KRS 1500 Series
KRS1518 (not shown)
Width: 24.00"
Height: 54.60"
Depth: 29.09"
Case height: 50.67"

For KRS 700 and 7000 Series
KRL7018 (not shown)
Width: 24.00"
Height: 57.90"
Depth: 29.09"
Case height: 57.89"

For KRS 1000 Series
KRL1018 (shown left)
Width: 24.00"
Height: 63.375"
Depth: 29.09"
Case height: 62.375"



Under Bench Cart Port

KRS2417 (shown left)

Width: 24.00"
Height: 36.82"
Depth: 29.09"
Case height: 32.89"
(Shown with KRS 2415 Bulk Storage, can also be used with 700 and 7000 Series tool storage units).

Stainless Steel Work Surfaces

Now available with integrated backsplash and electrical outlets. Ordering is easy.

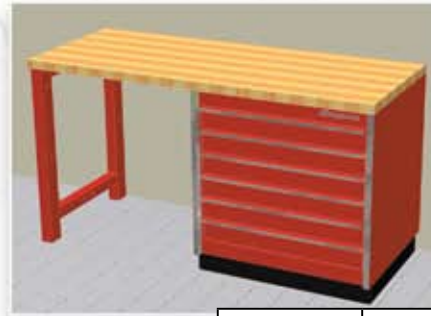
1. Choose top:
KRSST – No backsplash
KRSSTF – Flat backsplash
KRSSTE – Electrical backsplash
2. Choose depth: **24"**, **29"** or **32"**
3. Choose length: **18"** – **144"**



Note: If length is not standard, order the next larger size and put desired length in "remarks" section of order form.

CUSTOM SOLUTIONS

Utilizing the standard Snap-on Stationary Storage components, you can create the perfect combination to satisfy your storage capacity and floor plan requirements. Add your choice of custom-fabricated hardwood or stainless steel work surfaces to complete your system. Your Snap-on Industrial sales rep can answer all your questions and make recommendations.



PRODUCT	DESCRIPTION	QTY.
KRS756	Tool Storage	1
KRWT29072	Wood Surface	1 or
KRSST29072	Stainless Surface	1
KRS29LEG	Support Leg	1

PRODUCT	DESCRIPTION	QTY.
KRS756	Tool Storage	1
KRWT29108	Wood Surface	1 or
KRSST29108	Stainless Surface	1
KRS29LEG	Support Leg	2

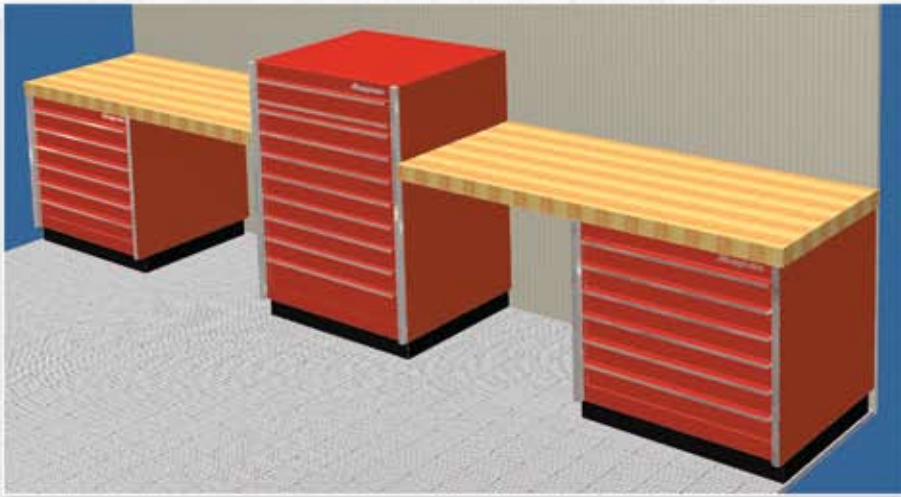


PRODUCT	DESCRIPTION	QTY.
KRS756	Tool Storage	1
KRWT29072	Wood Surface	2 or
KRSSTF29072	Stainless Surface	2
KRS29LEG	Support Leg	2
KRSST29L29R	Corner	2

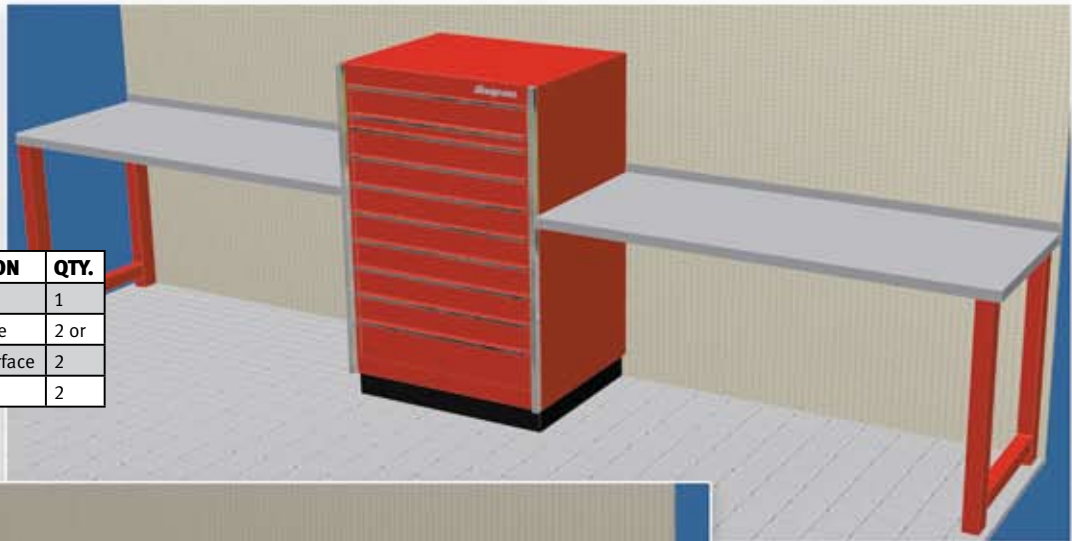
PRODUCT	DESCRIPTION	QTY.
KRS756	Tool Storage	2
KRWT29072	Wood Surface	2 or
KRFSST29072	Stainless Surface	2
KRS29LEG	Support Leg	1
KRSST29L29R	Corner	1



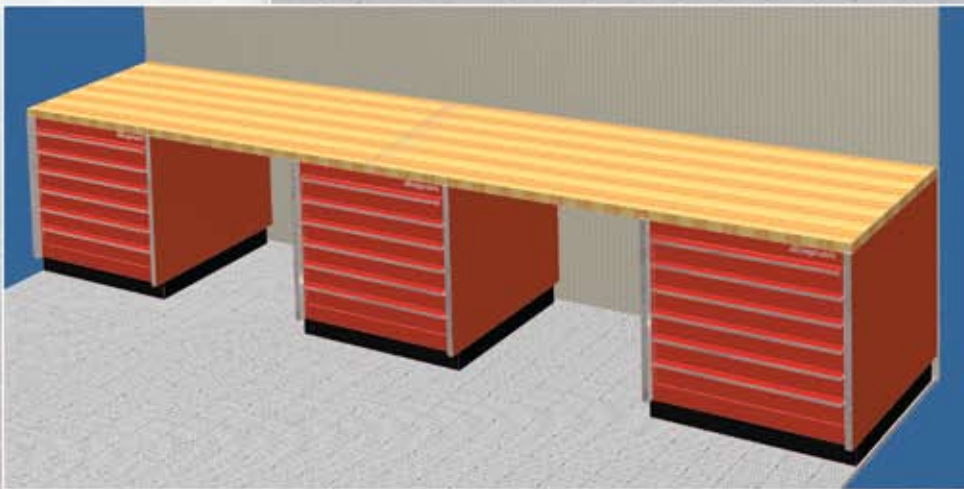
STATIONARY STORAGE SYSTEM



PRODUCT	DESCRIPTION	QTY.
KRS756	Tool Storage	2
KRS1501	Tool Storage	1
KRWT29072	Wood Surface	2 or
KRFSST29072	Stainless Surface	2
KRS29LEG	Support Leg	2



PRODUCT	DESCRIPTION	QTY.
KRS1501	Tool Storage	1
KRWT29060	Wood Surface	2 or
KRFSST29060	Stainless Surface	2
KRS29LEG	Support Leg	2



PRODUCT	DESCRIPTION	QTY.
KRS756	Tool Storage	3
KRWT29084	Wood Surface	2 or
KRFSST29084	Stainless Surface	2

Call your Snap-on Industrial sales representative for additional information.

PRE-ENGINEERED SOLUTIONS

Standard packages that raise the standards for efficiency and productivity. Each free-standing component is genuine Snap-on – ensuring premium performance in the most punishing work environments.

Convenience and Performance

- Easy ordering with a single part number
- More storage with a smaller footprint
- Knockouts for electrical applications
- Bottom skids for forklift access
- Full extension of drawer for maximum visibility
- Full width drawer and door pulls for simple one-handed operation



KRSWKS1SPBO

Width: 72" Height: 78" Depth: 29"



KRSWKS2SPBO

Width: 108" Height: 78" Depth: 29"



Call your Snap-on Industrial sales representative for additional information.

PRE-ENGINEERED COMPONENT LIST

PRE-ENGINEERED SOLUTIONS			
PART #	KRSWKS1SPBO Complete Work Station		
(2) KRWL3635	Overheads	KRSST29108	Stainless Steel Work Surface or
KRW7572A	Riser With Door	KRWT1004A	Hardwood Work Surface
KRS756	Tool Storage Unit	(2) 711R650PV	Base For KRL711A and KRL715
KRS32END	Filler Panel		
KRSST29072	Stainless Steel Work Surface		KRSWKS3SPBO Complete Work Station**
KRS29LEG	Support leg	(4) KRWL3635	Overheads
		(2) KRW7572A	Risers With Doors
		KRS756	Tool Storage Unit
	KRSWKS2SPBO Complete Work Station*	KRL711A	Drawer Section
(2) KRWL5435	Overheads	KRL715B	Bulk Storage Section
(2) KRW7554A	Risers With Doors	(2) 711R650PV	Base For KRL711A and KRL715
KRS756	Tool Storage Unit	(2) KRS32END	Filler Panel
KRL711A	Drawer Section	KRSST29144	Stainless Steel Work Surface or
KRL715B	Bulk Storage Section	KRWT7065	Hardwood Work Surface
(2) KRS32END	Filler Panel		

* For hardwood work surface use part number KRSWKSTN2PBO for complete system, and KRWT1004A for work surface alone.

** For hardwood work surface use part number KRSWKSTN3PBO for complete system, and KRWT7065 for work surface alone.



KRSWKS3SPBO

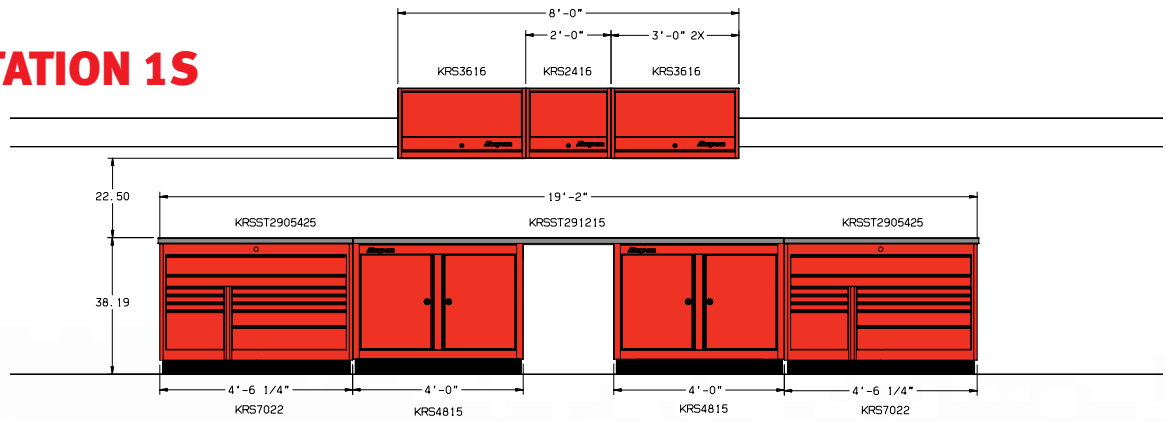
Width: 144" Height: 78" Depth: 29"

STATIONARY

PRE-CONFIGURED WORKSTATIONS

Snap-on offers eight pre-configured workstations for you to choose from, or you can use the following dimensional drawings to help you to design your own custom installation to meet your Stationary Storage requirements. Contact your Snap-on Industrial sales representative for more ideas and assistance.

WORKSTATION 1S

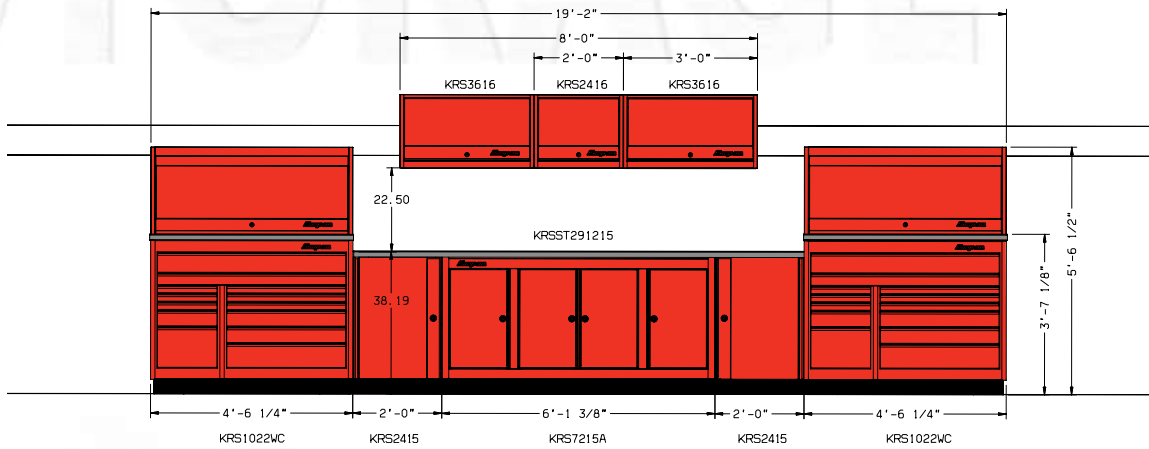


PBO- Snap-on Red
 PC- Gloss Black
 PCM- Royal Blue
 PES- Ultra Yellow
 PKS- Arctic Silver
 PDG- Midnight Blue

PRODUCT	DESCRIPTION	QUANTITY
KRS7022	Tool Storage	2
KRS4815	Bulk Storage	2
KRS3616	Wall Storage	2
KRS2416	Wall Storage	1
KRSST2905425	Stainless Top	2
KRSST291215	Stainless Top	1



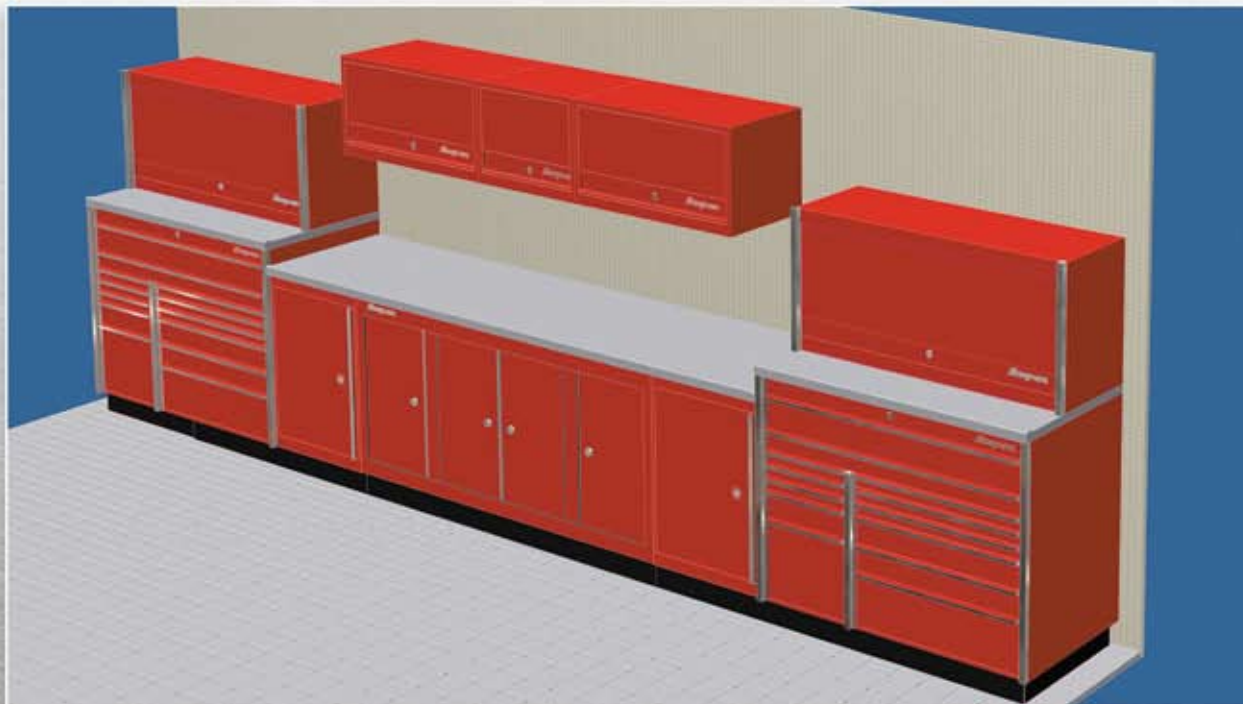
WORKSTATION 2



PRODUCT	DESCRIPTION	QUANTITY
KRS1022WC	Tool Storage	2
KRS7215A	Bulk Storage	1
KRS2415	Bulk Storage	2
KRS3616	Wall Storage	2
KRS2416	Wall Storage	1
KRSST291215	Stainless Top	1

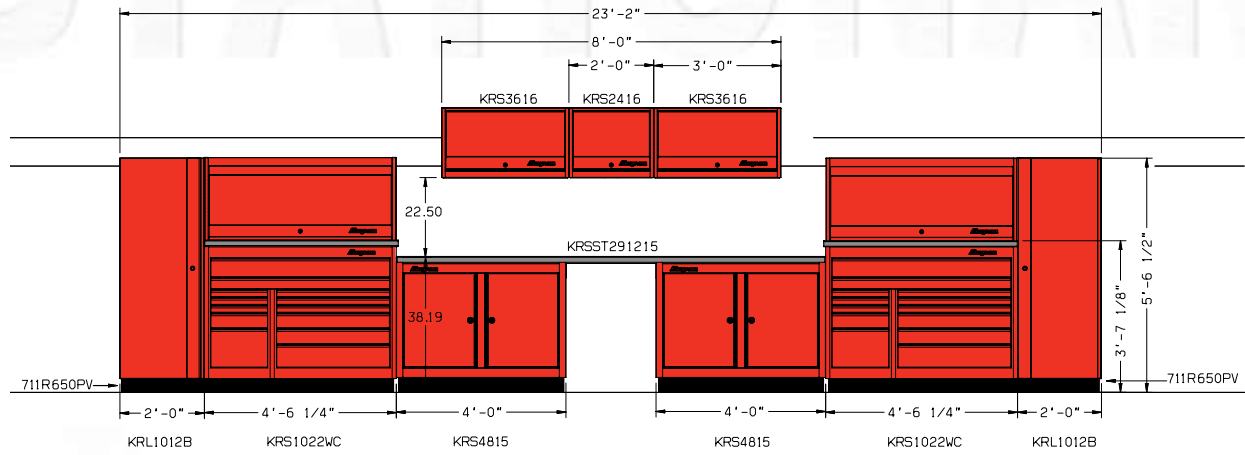
PBO- Snap-on Red
 PC- Gloss Black
 PCM- Royal Blue
 PES- Ultra Yellow
 PKS- Arctic Silver
 PDG- Midnight Blue

Call your Snap-on Industrial sales representative for additional information.



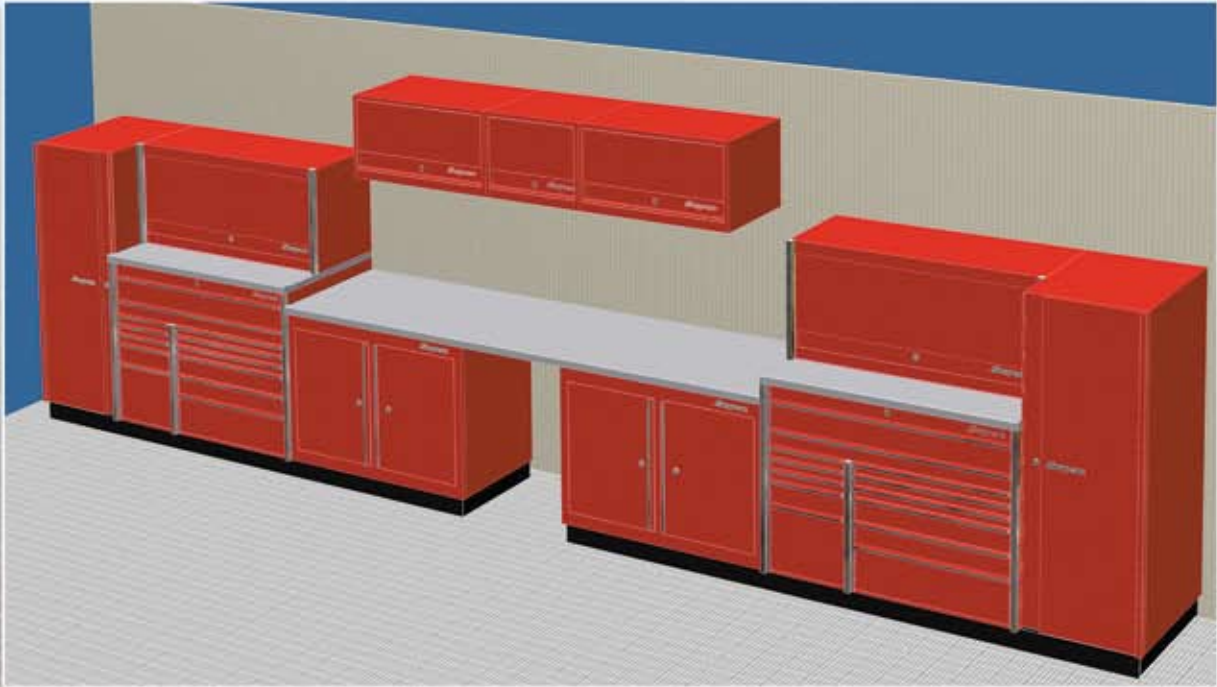
STATIONARY

WORKSTATION 2S

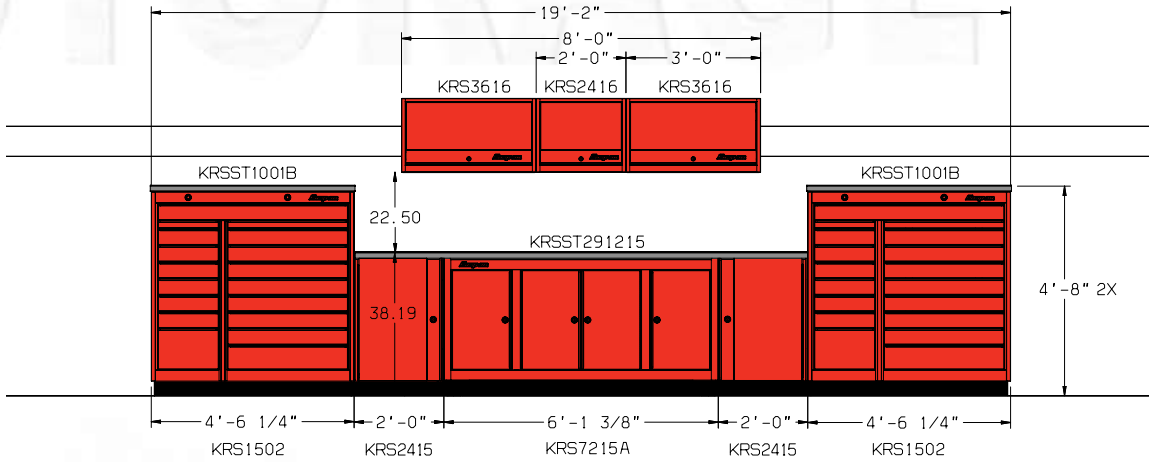


PBO- Snap-on Red
 PC- Gloss Black
 PCM- Royal Blue
 PES- Ultra Yellow
 PKS- Arctic Silver
 PDG- Midnight Blue

PRODUCT	DESCRIPTION	QUANTITY
KRS1022WC	Tool Storage	2
KRS4815	Bulk Storage	2
KRL1012B	Locker	2
711R650PV	Locker Stand	2
KRS3616	Wall Storage	2
KRS2416	Wall Storage	1
KRSST291215	Stainless Top	1



WORKSTATION 3



PRODUCT	DESCRIPTION	QUANTITY
KRS1502	Tool Storage	2
KRS7215A	Bulk Storage	1
KRS2415	Bulk Storage	2
KRS3616	Wall Storage	2
KRS2416	Wall Storage	1
KRSST1001B	Stainless Top	2
KRSST291215	Stainless Top	1

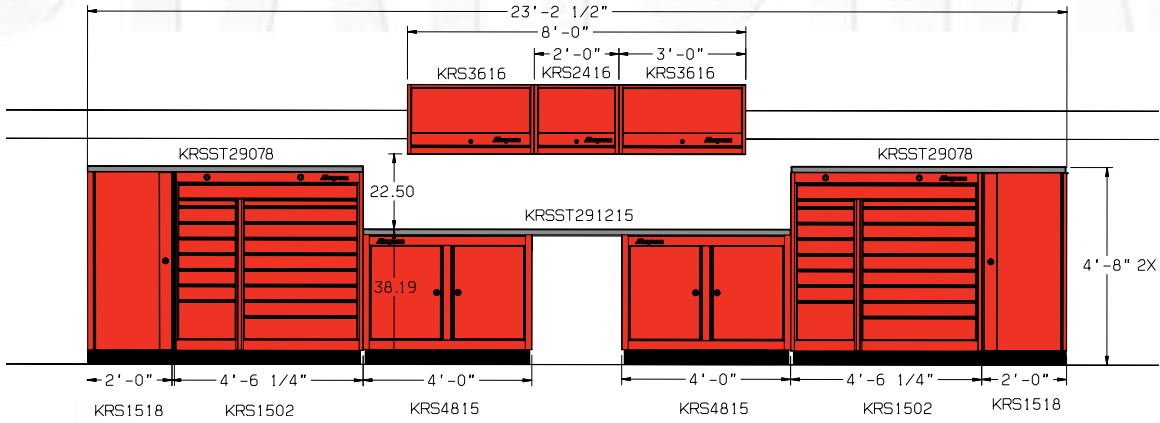
- PBO- Snap-on Red
- PC- Gloss Black
- PCM- Royal Blue
- PES- Ultra Yellow
- PKS- Arctic Silver
- PDG- Midnight Blue

Call your Snap-on Industrial sales representative for additional information.



STATIONARY

WORKSTATION 3S

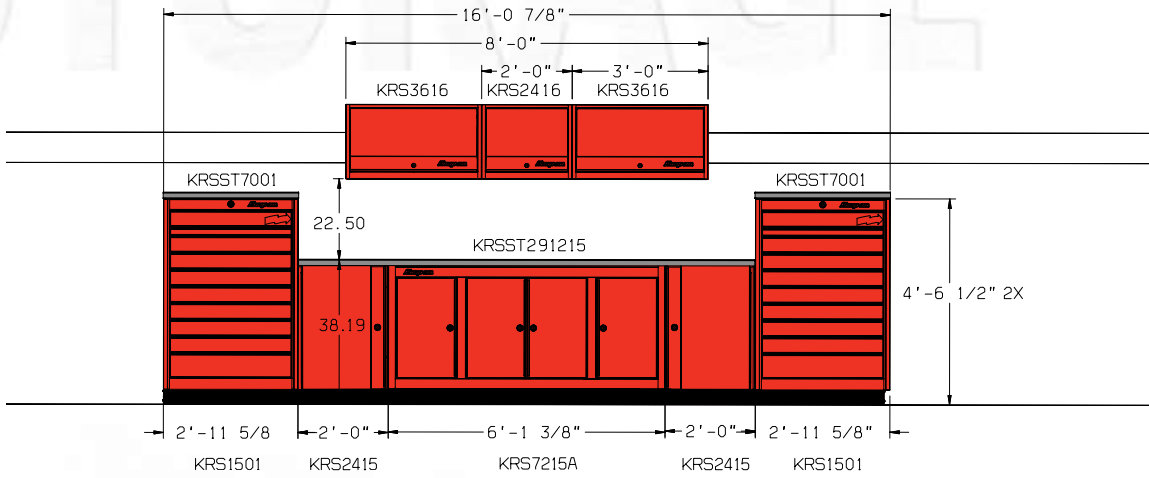


PBO- Snap-on Red
 PC- Gloss Black
 PCM- Royal Blue
 PES- Ultra Yellow
 PKS- Arctic Silver
 PDG- Midnight Blue

PRODUCT	DESCRIPTION	QUANTITY
KRS1502	Tool Storage	2
KRS1518	Docker Locker	2
KRS4815	Bulk Storage	2
KRS3616	Wall Storage	2
KRS2416	Wall Storage	1
KRSST29078	Stainless Top	2
KRSST291215	Stainless Top	1



WORKSTATION 4



PRODUCT	DESCRIPTION	QUANTITY
KRS1501	Tool Storage	2
KRS7215A	Bulk Storage	1
KRS2415	Bulk Storage	2
KRS3616	Wall Storage	2
KRS2416	Wall Storage	1
KRSST7001	Stainless Top	2
KRSST291215	Stainless Top	1

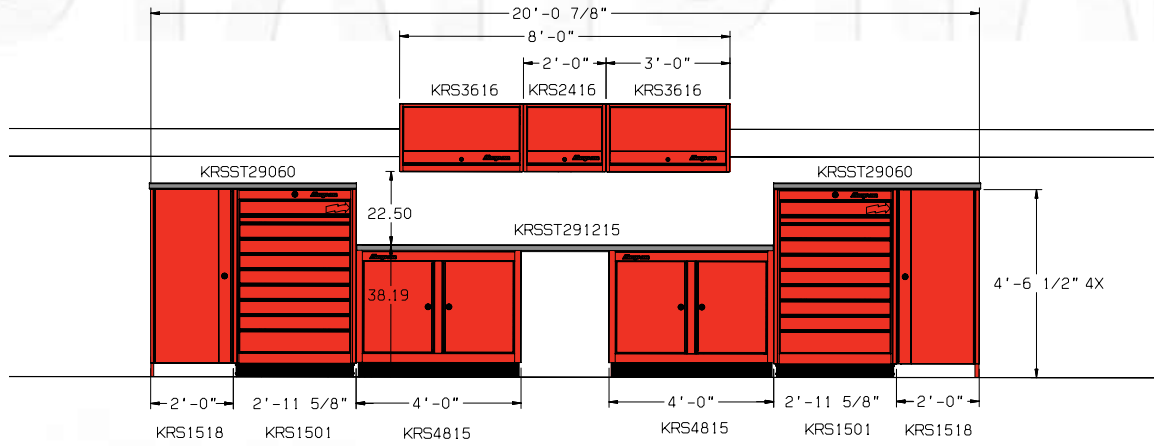
- PBO- Snap-on Red
- PC- Gloss Black
- PCM- Royal Blue
- PES- Ultra Yellow
- PKS- Arctic Silver
- PDG- Midnight Blue

Call your Snap-on Industrial sales representative for additional information.



STATIONARY

WORKSTATION 4S

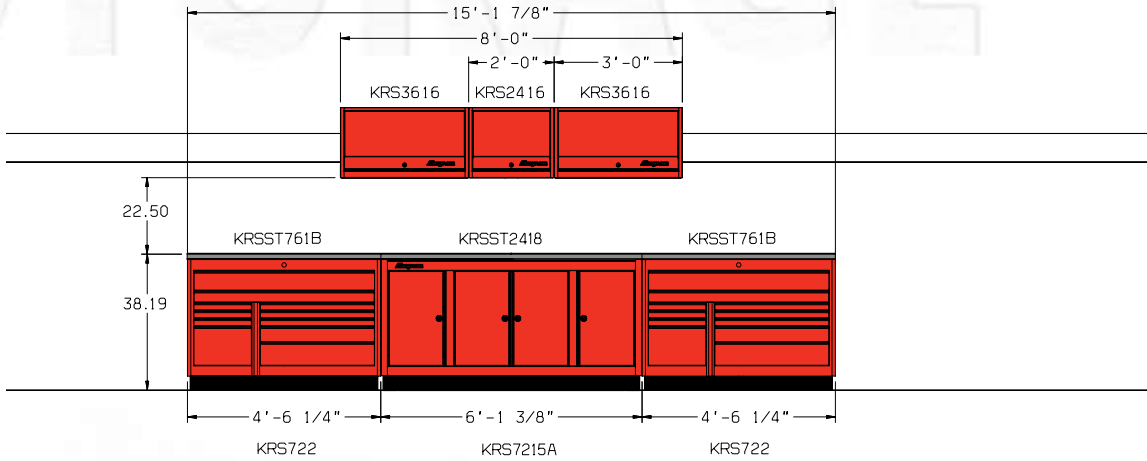


PBO- Snap-on Red
 PC- Gloss Black
 PCM- Royal Blue
 PES- Ultra Yellow
 PKS- Arctic Silver
 PDG- Midnight Blue

PRODUCT	DESCRIPTION	QUANTITY
KRS1501	Tool Storage	2
KRS1518	Docker Locker	2
KRS4815	Bulk Storage	2
KRS3616	Wall Storage	2
KRS2416	Wall Storage	1
KRSST29060	Stainless Top	2
KRSST291215	Stainless Top	1

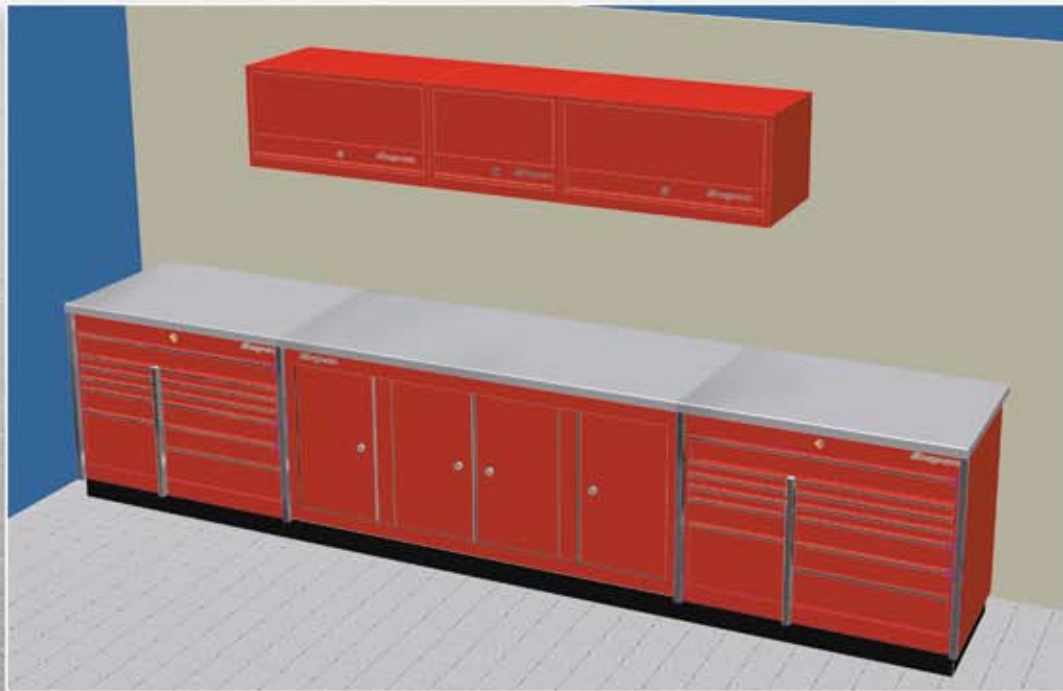


WORKSTATION 5



PRODUCT	DESCRIPTION	QUANTITY
KRS722	Tool Storage	2
KRS7215A	Bulk Storage	1
KRS3616	Wall Storage	2
KRS2416	Wall Storage	1
KRSST2418	Stainless Top	1
KRSST761B	Stainless Top	2

PBO- Snap-on Red
 PC- Gloss Black
 PCM- Royal Blue
 PES- Ultra Yellow
 PKS- Arctic Silver
 PDG- Midnight Blue





RAISING THE STANDARDS FOR QUALITY AND DEPENDABILITY

Professionals know that being organized is key to being productive. Choosing the right combination of products to suit your work style and getting the maximum return on your tool storage investment leads more people to Snap-on than anywhere else.

We engineer our base storage units and tool chests to carry their loads better and longer.

To prove our point, we set this 21,000 lb. Peterbilt dump truck on six Masters Series KRL1022 base storage units. Even under these exceptional circumstances, the drawers worked smoothly.

You expect your tool boxes to perform under load for years. We build them to do just that.

Snap-on Gives You Nothing Short Of Total Support.

To order: Contact your Industrial Account Manager or call the Snap-on Industrial Customer Service Center at 1-877-740-1900.