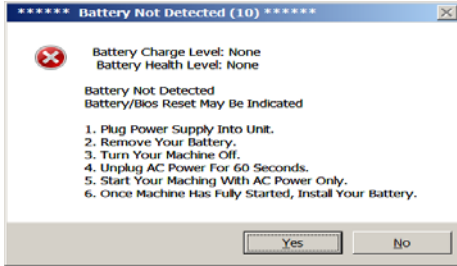


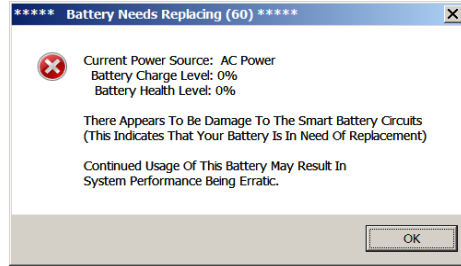
Error Code 10

Battery Not Detected, Bios Reset May Be Required.



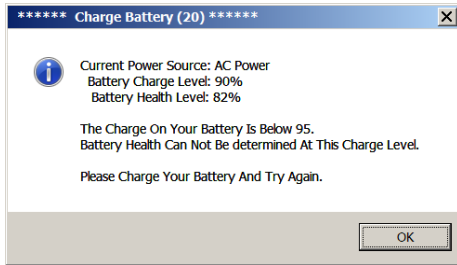
Error Code 60

Battery w/0% charge, Suspected Red X Bad Battery. (Second Test)



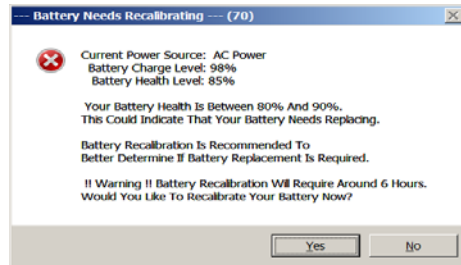
Error Code 20

Battery Needs Charging To Be Properly Tested.



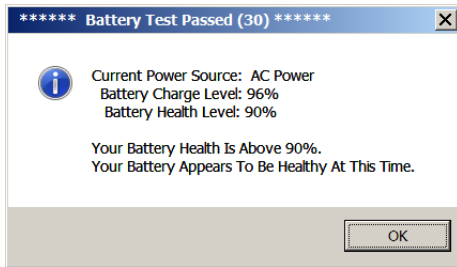
Error Code 70

Needs Recalibrating, Battery Suspect



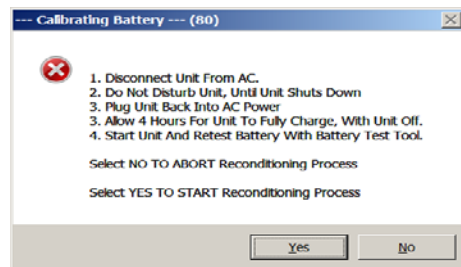
Error Code 30

Battery Passed All Tests.



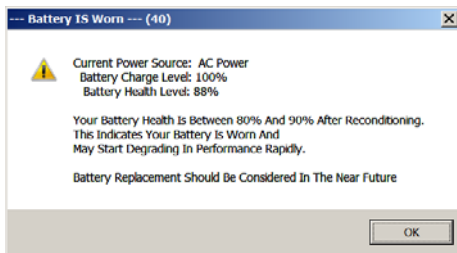
Error Code 80

Re-Calibration Process Details.



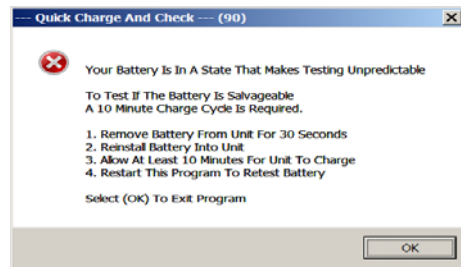
Error Code 40

Battery Is Worn But Passed Battery Test.



Error Code 90

Battery w/0% charge and AC Power Unit May Be A Red X Unit.



Error Code 50

Battery Needs Replacing Now.

