



Activation and Software Upgrade Instructions

This document provides instructions for activating and upgrading a MODIS™ diagnostic tool using DSS ScanBay.

IMPORTANT:

If *Software Bundle 4.1* or an earlier version of software is installed on your system, you will need to upgrade your Scanner™ Plug-in (hardware). Contact your sales representative for details. The software revision number appears on the MODIS System Information screen. Refer to your *MODIS Display User's Manual* for details on System Info and instructions on how to locate the software revision and bundle version numbers.

Programming Time

Estimated Platform Activation Time: 1 minute

To speed new platform activation, make sure to perform a DSS ScanBay Truck Stock upgrade at the time of a new software release.

Software Upgrade Estimated Time: 14-17 minutes

Includes CompactFlash® (CF) programming, unit restart and installation/loading.

Before You Begin

To perform the activation or the software upgrade, you need the following::

- MODIS unit with battery pack removed
- DSS and DSS ScanBay™ installed on PC
- ScanBay programmed 512MB CompactFlash® (CF) Card
(see Appendix A: CompactFlash (CF) Card Software Upgrade Programming Instructions)
- Access to AC/DC power
- The unit's AC/DC power supply
- Battery pack
- A standard CF card reader

Activating and Upgrading the Software

This software installation can only be run one time and on one MODIS unit. The instructions below describe how to upgrade your MODIS system software. Only use the AC/DC power supply as your power source during this upgrade procedure.

IMPORTANT:

Never insert or remove the side slot CompactFlash® (CF) card when your MODIS unit is powered on. Doing so can damage the software on the CF card.

**To upgrade the MODIS system software:**

1. Power off your MODIS unit.
2. Remove the battery pack.
3. Remove the left handgrip.
4. Remove all CF cards from the side and top slots.
5. Insert the master CF card into the side card slot with the front CF label facing you and the arrows on the label pointing towards the slot (Figure 1).

IMPORTANT:

The CF card fits easily into the slot only when inserted properly. Do not force the CF card into the slot.

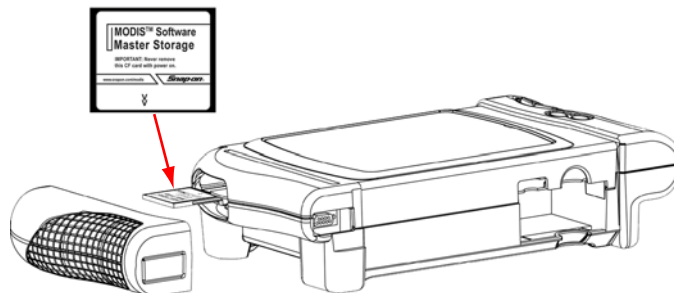


Figure 1 Sample MODIS unit CF card side slot

6. Connect the AC/DC power supply to your MODIS unit.

IMPORTANT:

Make sure the AC/DC power supply is connected to a reliable power source. Do not disconnect power while the upgrade is installing. Doing so can damage the software and prevent the unit from operating properly.

7. Press the **Power** button.
The upgrade process begins and several messages display.
8. Follow the on-screen instructions.
If prompted to restart the unit, do the following:
 - a. Press and hold the **Power** button until you hear three double beeps followed by one long beep, then release the button.
 - b. Press the **Power** button again to restart the unit.

The **Scanner File Download** progress indicator displays and the upgrade continues (Figure 2).

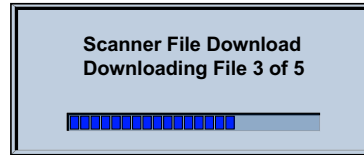


Figure 2 *Sample Scanner File Download dialog box*

9. When the “Download Completed” message displays, press **Y/✓** to continue (Figure 3).

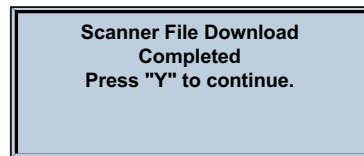


Figure 3 *Sample Download Completed message*

When the main menu displays you may begin using your system.



NOTE:

If you have previously installed an optional software kit, such as the European Vehicle Communications Software Kit or Heavy Duty Vehicle Communication Kit, you do not need to re-initialize it after this system software upgrade.

Appendix A: CompactFlash (CF) Card Software Upgrade Programming Instructions

This document provides instructions for transferring a software upgrade or upgrade program to a CF card using DSS ScanBay, prior to installing the software on the MODIS unit.

Before You Begin

To download a software upgrade for the MODIS you need:

- A standard CF card reader
- The CF card that contains the software program removed from the diagnostic tool to be upgraded.



To download an upgrade to a CF card:

1. Connect the card reader to your PC.
2. Install the CF card into the card reader (Figure 4).

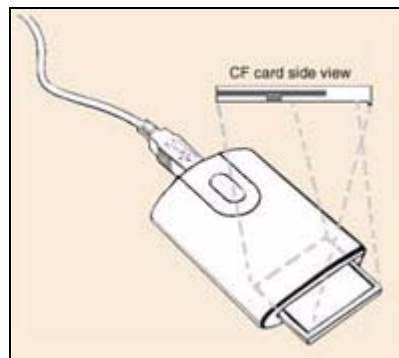


Figure 4 Sample CF card reader

A “removable disk” window may automatically open on the PC (Figure 5).



Figure 5 Sample removable disk window

3. If the removable disk window opens, click **Cancel** to close it.
4. Follow the prompts on the PC where applicable.
5. Open an invoice for your customer and click the **ScanBay** button.
The Select Programming Media dialog box displays (Figure 6).

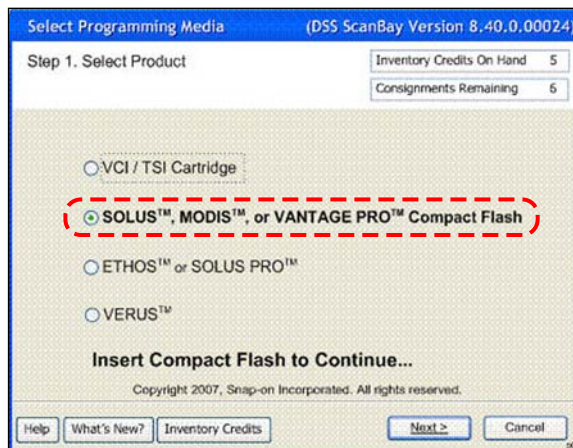


Figure 6 Sample Select Programming Media dialog box

6. Select **SOLUS, MODIS or VantagePRO–CompactFlash** in the dialog box, then click **OK**.
The ScanBay Programmer Software window displays (Figure 7).
7. **Check** the box for the software you want to download and follow the screen prompts to select the correct download and identify your customer.

8. Verify all information is accurate on the confirmation screen, then select **Next** to continue.

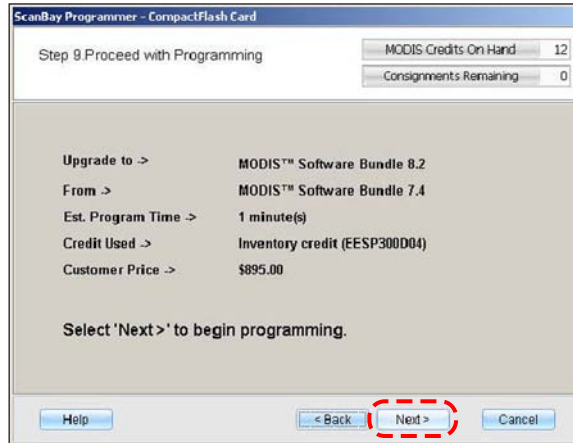


Figure 7 Sample download verification screen

9. After the download completes, select Finish to close the ScanBay Programmer.
10. Eject the CF card from the CF card reader (Go to **My Computer**, right-click the CF drive, and select **Eject** from the pop-up menu).

The CF card is now ready to upgrade the software on a handheld diagnostic tool, follow the instructions for the specific tool to install the upgrade.

NOTE:



This software installation can only be run one time and on one handheld diagnostic tool.
