

## EZ Lift™ Manual Products

- Capacities from 1/4 to 10 tons
- Overload limiting device is standard\*
- Chain anchor maintains lower limit
- Machined chain sprocket mounted on roller bearings
- Weston-style braking
- Double-reduction precision machined drive train gearing
- Hook inspection marks
- Galvanized high strength alloy steel load chain
- Epoxy paint
- \* 1/4 ton model does not include overload limiting device

Part Number	R&M Model #	Capacity (Tons)	Height of Lift (Ft.)	Reeving	Chain Pull to Lift Rated Load (Lbs.)	Weight (Lbs.)
RMH104341010	RM II	1/4	10	1 Fall	53	14
RMH104341015			15	1 Fall	53	18
RMH104341020			20	1 Fall	53	22
RMH104342010	RM II	1/2	10	1 Fall	54	25
RMH104342015			15	1 Fall	54	30
RMH104342020			20	1 Fall	54	35
RMH104343010	RM II	1	10	1 Fall	57	29
RMH104343015			15	1 Fall	57	34
RMH104343020			20	1 Fall	57	39
RMH104344010	RM II	1 1/2	10	1 Fall	60	40
RMH104344015			15	1 Fall	60	46
RMH104344020			20	1 Fall	60	52
RMH104345010	RM II	2	10	1 Fall	76	45
RMH104345015			15	1 Fall	76	52
RMH104345020			20	1 Fall	76	59
RMH104346010	RM II	3	10	1 Fall	84	78
RMH104346015			15	1 Fall	84	88
RMH104346020			20	1 Fall	84	98
RMH104347010	RM II	5	10	2 Fall	81	91
RMH104347015			15	2 Fall	81	105
RMH104347020			20	2 Fall	81	119
RMH104432010	RM II	7.5	10	3 Fall	84	137
RMH104432015			15	3 Fall	84	154
RMH104432020			20	3 Fall	84	171
RMH104433010	RM II	10	10	4 Fall	84	173
RMH104433015			15	4 Fall	84	196
RMH104433020			20	4 Fall	84	219



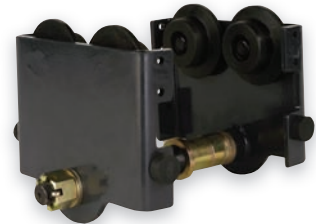
## RPT Push & Hand Geared Trolleys

- Converts fixed top hook hoist to push/pull travel or hand geared travel
- Wheel treads compatible with W and I -beams
- Wheels mounted on bearings
- Adjustable for a wide range of flange widths
- Safety drop lugs and rubber bumpers are standard
- Spark resistant options available
- \*\* Larger flange widths available

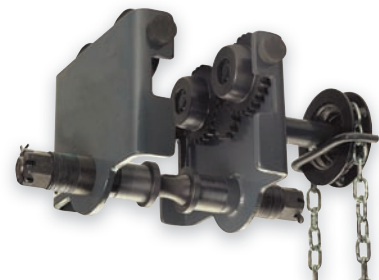
Part Number	R&M Model #	Capacity (Tons)	Height of Lift (Ft.)	Flange Width**
RMH052291758	RPT	1/4	N/A	2.00 - 7.88
RMH052291759	RPT	1/2	N/A	2.00 - 7.88
RMH052291761	RPT	1	N/A	2.56 - 7.88
RMH052291763	RPT	2	N/A	3.46 - 7.88
RMH052296722	RPT	3	N/A	3.93 - 7.95
RMH052296724	RPT	5	N/A	4.50 - 7.95

Part Number	R&M Model #	Capacity (Tons)	Height of Lift (Ft.)	Flange Width**
RMH104437010	RPTC	1	10	2.56 - 7.88
RMH104437015			15	2.56 - 7.88
RMH104437020			20	2.56 - 7.88
RMH104439010	RPTC	2	10	3.46 - 7.88
RMH104439015			15	3.46 - 7.88
RMH104439020			20	3.46 - 7.88
RMH104441010	RPTC	3	10	3.93 - 7.95
RMH104441015			15	3.93 - 7.95
RMH104441020			20	3.93 - 7.95
RMH104443010	RPTC	5	10	4.50 - 7.87
RMH104443015			15	4.50 - 7.87
RMH104443020			20	4.50 - 7.87
RMH104445010	RPTC	10	10	4.88 - 7.87
RMH104445015			15	4.88 - 7.87
RMH104445020			20	4.88 - 7.87

RPT Push Trolley



RPTC Hand Geared Trolley



Contact your local area Snap-on representative

## RL Manual Lever Puller

- Designed for both hoisting and pulling loads
- Lever directional switch allows operation from both directions
- Weston-style braking

Part Number	R&M Model #	Capacity (Tons)	Height of Lift (Ft.)	Reeving	Chain Pull to Lift Rated Load (Lbs.)	Weight (Lbs.)
RMH104332005	RL	1/4	5	1 Fall	55	5
RMH104332010			10	1 Fall	55	6.5
RMH104332015			15	1 Fall	55	8
RMH104333005	RL	3/4	5	1 Fall	55	14
RMH104333010			10	1 Fall	55	17
RMH104333015			15	1 Fall	55	20
RMH104334005	RL	1 1/2	5	1 Fall	66	21
RMH104334010			10	1 Fall	66	25
RMH104334015			15	1 Fall	66	29
RMH104335005	RL	3	5	1 Fall	88	45
RMH104335010			10	1 Fall	88	52
RMH104335015			15	1 Fall	88	59



## RLP Premium Manual Lever Puller

- Designed for both hoisting and pulling loads
- 360° handle rotation for operation from either side
- Rubber handle grip for safety and comfort
- Open chain path for simple inspection and cleaning

Part Number	R&M Model #	Capacity (Tons)	Height of Lift (Ft.)	Reeving	Chain Pull to Lift Rated Load (Lbs.)	Weight (Lbs.)
RMH104336005	RLP	3/4	5	1 Fall	31.5	16.5
RMH104336010			10	1 Fall	31.5	19
RMH104336015			15	1 Fall	31.5	21.5
RMH104337005	RLP	1	5	1 Fall	42	16.5
RMH104337010			10	1 Fall	42	19
RMH104337015			15	1 Fall	42	21.5
RMH104338005	RLP	1 1/2	5	1 Fall	49.5	26
RMH104338010			10	1 Fall	49.5	30
RMH104338015			15	1 Fall	49.5	34
RMH104339005	RLP	3	10	1 Fall	72	50
RMH104339010			15	1 Fall	72	56
RMH104339015			20	1 Fall	72	62
RMH104340005	RLP	6	5	2 Fall	77	69
RMH104340010			10	2 Fall	77	75
RMH104340015			15	2 Fall	77	81



## RBC Beam Clamp

- Built-in suspension bar provides lower headroom
- Fast action transition screw provides for easy adjustment
- Versatile jaws accommodate either I-beams or Wide Flange beams

Part Number	R&M Model #	Capacity (Tons)	Flange Width
RMH309793001	RBC	1	3" to 9"
RMH309793002	RBC	2	3" to 9"
RMH309793003	RBC	3	3-3/16" to 12-9/16"
RMH309793004	RBC	5	3-3/16" to 12-1/8"



## LoadMate® Electric Chain Hoists 1/4 Ton to 5 Ton Capacities



Fixed Top Hook



Push Trolley



Motorized Trolley

### Single Phase Units 1/4 Ton to 1 Ton Capacities

Top Hook (TH) Part Number	Lift (Feet)	Headroom (In)	Weight (Lbs)	Push Trolley (PT) Part Number	Headroom (In)	Weight (Lbs)	Flange Adjustment (In)
1/4 Ton Capacity - Lift Speed 16 FPM - 115V/1Ph. / 60Hz							
RMH764435001	10	16 1/2	60	RMH764435004	17	74	1.97"-7.87"
RMH764435002	15	16 1/2	62	RMH764435005	17	76	1.97"-7.87"
RMH764435003	20	16 1/2	64	RMH764435006	17	78	1.97"-7.87"
1/2 Ton Capacity - Lift Speed 16 FPM - 115V/1Ph. / 60Hz							
RMH764435007	10	16 1/2	60	RMH764435010	17	74	1.97"-7.87"
RMH764435008	15	16 1/2	62	RMH764435011	17	76	1.97"-7.87"
RMH764435009	20	16 1/2	64	RMH764435012	17	78	1.97"-7.87"
1 Ton Capacity - Lift Speed 8 FPM - 115V/1Ph. / 60Hz							
RMH764435013	10	18 1/2	67	RMH764435016	19	89	2.56"-7.87"
RMH764435014	15	18 1/2	71	RMH764435017	19	93	2.56"-7.87"
RMH764435015	20	18 1/2	75	RMH764435018	19	97	2.56"-7.87"



**Special Low Headroom Trolley Configuration**  
Using special trolley frame with upper sheave and offset hoist machinery, lifting heights can be optimized. Allows for maximum hook height in tight clearance applications.



#### Variable Speed LoadMate®

- LM05/LM10 frame size only
- Capacities 1/2 to 2 ton
- All controls under the cover
- Stepless speed control
- Adjustable accel/decel parameters

Contact your local area Snap-on representative

## LoadMate® Electric Chain Hoists Three Phase Units 1/2 Ton to 5 Ton Capacities

Top Hook (TH) Part Number	Lift** (feet)	Headroom (In)	Weight (Lbs)	Push Trolley (PT) Part Number	Headroom (In)	Weight (Lbs)	Flange Adjustment (In)	Motorized Trolley (MT)** Part Number	Headroom (In)	Weight (Lbs)	Flange Adjustment (In)
1/2 Ton Capacity - Hoist Speed 16 FPM - 460 V. / 3Ph. / 60 Hz. (Reconnectable for 208V. or 230V.)											
RMH764435049	10*	16 1/2	60	RMH764435052	19 1/4	74	1.97-7.87	RMH764435058	18	177	4.17-6.10
RMH764435050	15	16 1/2	62	RMH764435053	19 1/4	76	1.97-7.87	RMH764435059	18	179	4.17-6.10
RMH764435051	20	16 1/2	64	RMH764435054	19 1/4	78	1.97-7.87	RMH764435060	18	181	4.17-6.10
1 Ton Capacity - Hoist Speed 16 FPM - 460 V. / 3Ph. / 60 Hz. (Reconnectable for 208V. or 230V.)											
RMH764436001	10	20 1/4	122	RMH764436004	22	144	3.47-7.87	RMH764436010	21	239	4.17-6.10
RMH764436002	15	20 1/4	126	RMH764436005	22	148	3.47-7.87	RMH764436011	21	243	4.17-6.10
RMH764436003	20	20 1/4	130	RMH764436006	22	152	3.47-7.87	RMH764436012	21	247	4.17-6.10
2 Ton Capacity - Hoist Speed 16 FPM - 460 V. / 3Ph. / 60 Hz. (Reconnectable for 208V. or 230V.)											
RMH764436016	10	22 1/2	133	RMH764436019	25	218	3.47-7.87	RMH764436025	23 1/2	250	5.16-7.46
RMH764436017	15	22 1/2	141	RMH764436020	25	226	3.47-7.87	RMH764436026	23 1/2	258	5.16-7.46
RMH764436018	20	22 1/2	149	RMH764436021	25	234	3.47-7.87	RMH764436027	23 1/2	266	5.16-7.46
3 Ton Capacity - Hoist Speeds 16/4 FPM - 230 V. / 3Ph. / 60 Hz. (Reconnectable for 208V.)											
RMH764437019	10	26	243	RMH764437022	25 1/4	287	3.23-5.39	RMH764437028	25 1/4	353	3.23-5.39
RMH764437020	15	26	257	RMH764437023	25 1/4	301	3.23-5.39	RMH764437029	25 1/4	367	3.23-5.39
RMH764437021	20	26	271	RMH764437024	25 1/4	315	3.23-5.39	RMH764437030	25 1/4	381	3.23-5.39
3 Ton Capacity - Hoist Speed 16/4 FPM - 460 V. / 3Ph. / 60 Hz.											
RMH764437001	10	26	243	RMH764437007	25 1/4	287	5.51-7.48	RMH764437013	25 1/4	353	5.51-7.48
RMH764437002	15	26	257	RMH764437008	25 1/4	301	5.51-7.48	RMH764437014	25 1/4	367	5.51-7.48
RMH764437003	20	26	271	RMH764437009	25 1/4	315	5.51-7.48	RMH764437015	25 1/4	381	5.51-7.48
5 Ton Capacity - Hoist Speeds 12/3 FPM - 230 V. / 3Ph. / 60 Hz. (Reconnectable for 208V.)											
RMH764438022	10	31	243	RMH764438028	31	331	4.45-5.91	RMH764438037	31	375	4.45-5.91
RMH764438023	15	31	259	RMH764438029	31	347	4.45-5.91	RMH764438038	31	391	4.45-5.91
RMH764438024	20	31	275	RMH764438030	31	363	4.45-5.91	RMH764438039	31	407	4.45-5.91
5 Ton Capacity - Hoist Speeds 12/3 FPM - 460 V. / 3Ph. / 60 Hz.											
RMH764438001	10	31	243	RMH764438007	31	331	4.45-5.91	RMH764438016	31	375	4.45-5.91
RMH764438002	15	31	259	RMH764438008	31	347	4.45-5.91	RMH764438017	31	391	4.45-5.91
RMH764438003	20	31	275	RMH764438009	31	363	4.45-5.91	RMH764438018	31	407	4.45-5.91

\* Digichain Ergonomic Control available on 1/2 ton capacity, 10 Ft. lift, TH and PT models only with optional pricing.  
\*\* Motorized Trolley Speed: 80/20 FPM; Trolley bumpers and motor brake are included.

Notes:  
Part numbers listed are for the main voltages shown. If the "reconnectable voltages" are required please specify at the time of order.  
Part numbers listed are for the flange adjustments shown. Other flange adjustments are available. Please specify at the time of order.

### Digichain® Ergonomic Control Option

- 1/4 to 1/2 ton capacities within a maximum of 10 foot of lift
- Single fall only
- Standard E-stop button
- NEMA type 3R (IP-55) protection rating
- For use with Top Hook and Push Trolley models only
- Adds approximately 10 inches to headroom



P/B Station with E-stop and Chain Container are Standard

Contact your local area Snap-on representative

See Warranty Information on inside front cover