

Bring it on.

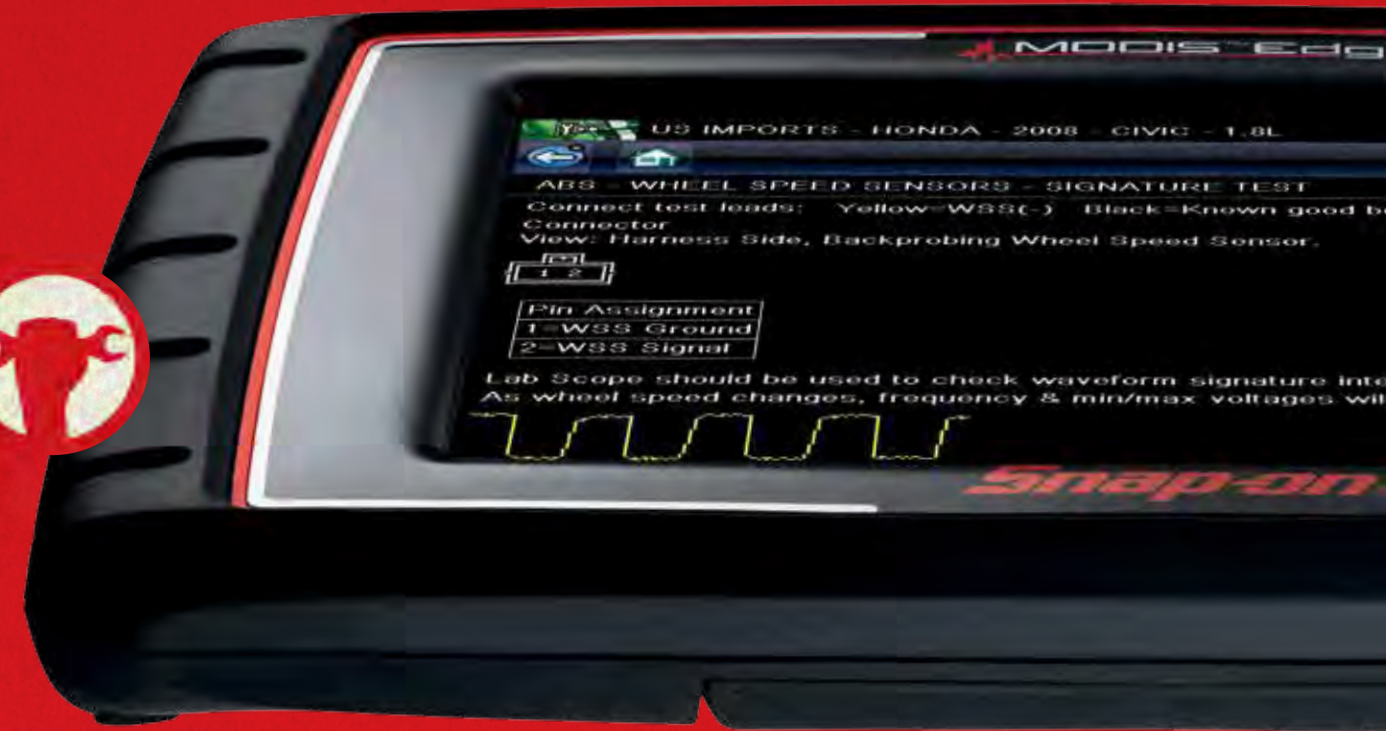


Say hello to confidence.  
Introducing the new MODIS™ Edge.

**Snap-on**



You're on the rise. Getting better, faster, and more able to handle bigger, more challenging tasks every day. As you up your game, it's time to up your tools. The MODIS Edge, a combination scanner and scope/graphing meter, delivers all new features plus the powerhouse speed and performance you expect from a complete diagnostic tool.



# Step it up.

With a five-second boot-up and Instant ID for automatic VIN recognition, MODIS Edge flies — getting you right down to business, right away. The SMX operating system and quick links to common procedures, oil specs and service interval resets mean lightning-quick navigation for fast results.



Say hello to speed.



# Pump it up.

Slim, light and strong, the new MODIS Edge runs far ahead of the pack. Its big 8-inch display shows results with precision and accuracy. The new Code Scan Vehicle Summary Report displays a complete view of diagnostic results for all available systems. And it's easy to print to share with customers for more convincing estimates. Its extended-range Wi-Fi makes triage and bay productivity a breeze. Exclusive Guided Component Tests show how to test, where to connect and what to look for, so you move quickly to the next work order.

Say hello to performance.



# Bank on it.

With the new MODIS Edge, you're on it. Its expert diagnostics eliminate guesswork. Access to exclusive SureTrack® provides everything you need right there on the screen—see Cause, Complaint and Correction with Real Fixes and Common Replacement Parts information. So you can fix it right the first time, which is great for shop workflow and your reputation. It's the right tool for right now.

Welcome to certainty.  
Introducing the new MODIS Edge.



# Just the facts.

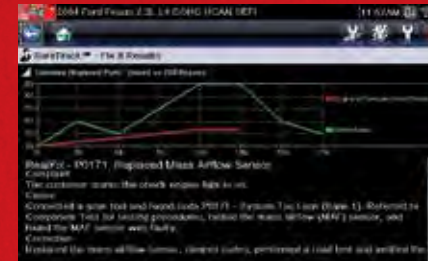
## SPEED

- Super fast boot up: ready to use in just five seconds
- Embedded SMX Operating System dedicated to diagnostic functions for fast, reliable operation
- 9-foot lighted OBD cable makes connection fast and easy
- Instant ID—VIN read automatically upon connection to the vehicle for 2008 and newer vehicles
- Quick access to common procedures, oil specs and service interval resets
- Convenient online software installation — available with optional software subscription plan

## PERFORMANCE

- Integrated full-function scan tool and high-speed scope/graphing meter in a single platform
- Exclusive Guided Component Tests show how to test, where to connect and what results to look for
- Get 48 vehicle makes and over 100 vehicle systems with Troubleshooter and SureTrack coverage including OEM-specific codes, live data graphing, functional tests and relearns & adaptations
- Code Scan offers a New Vehicle System Report for 2008 and newer vehicles; See results for all available systems plus generic OBD-II codes and Readiness Monitors for a more complete view of vehicle systems
- The Vehicle System Report may be printed in an attractive format as a customer takeaway
- Extended wireless range assists in triage functions and bay productivity
- Up to eight live data parameters displayed on-screen at one time in digital format
- “Finger-driven” 8-inch color touchscreen and 4-way thumb pad for quick navigation

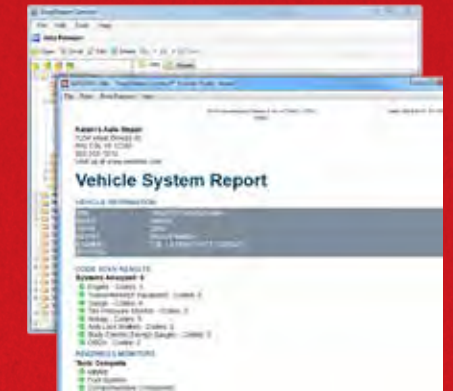
# Power to the tech.



Exclusive SureTrack Real Fixes and verified parts replacement records from successful repair orders.



Instant ID automatically identifies VIN when connected to the vehicle.



Code Scan's new Vehicle System Report with onscreen viewing and print option.

## THE SNAP-ON ADVANTAGE

- Access to the most comprehensive software available for Asian, domestic and European vehicles, as far back as 1980
- A support program, including our Customer Care hotline, extended warranty, online training, and long-term software upgrades
- Essential factory-level functions with every upgrade: cylinder contribution, hybrid power, automated EVAP, brake bleed, caliper rewind, ECM reset and many more
- Exclusive integrated SureTrack Real Fixes and parts replacement records for successful repairs
- Cause & Effect Diagnostics, letting you multitask with multiple views of functional tests and live data, to verify actual cause & effect of vehicle failures
- Great trade-in/resale value in the market, ensuring the value of your investment when it's time to trade up



## Quality guarantee

Keeping pace with the dynamic auto industry, we're committed to constantly enhancing and improving our diagnostic equipment to ensure that every investment you make with us is the most sophisticated, technologically advanced solution available on the market.

---

## Customer care

When you choose a Snap-on diagnostic tool, you gain a long-term partner. Experienced Snap-on Customer Care Representatives are available to support you on our Customer Care Hotline at 800-424-7226 or email [diagnostics\\_support@snapon.com](mailto:diagnostics_support@snapon.com). Se habla Español.

To learn more, talk to your Snap-on Representative or visit [diagnostics.snapon.com/modisedge](http://diagnostics.snapon.com/modisedge)

Snap-on is a trademark, registered in the United States and other countries, of Snap-on Incorporated. All rights reserved. ©Snap-on Incorporated 2016. Printed in the USA.

Part # EAZ0102L12A