



VERUS® Wireless
EEMS325

Snap-on®



PRODUCTIVITY

Introducing VERUS Wireless. Never before has one tool been able to scan, scope and run your business from anywhere in the shop. With web access and diagnostics now combined, the ability to improve productivity and increase profits is literally in your hands.



KEYLESS SIMPLICITY

The era of searching for specific keys for specific models is over. With VERUS Wireless, you don't even need to switch keys per system. Just attach the keyless scan module to the vehicle, choose the make and get the job done.



SPEED

VERUS Wireless now features a 25% faster processor, quick boot-up and one-touch icon shortcuts that let you jump between the Scanner, Scope or any function with the press of a finger. Get the answers you need to complete a job up to 50% quicker.



WIRELESS FREEDOM

Don't let cords hold you back. Once the wireless scan module is connected to the car, you're free to take readings from anywhere in the shop. Go ahead and spin a wheel, check a connector or go take readings from an easy chair. Go wireless and do more.



CONNECTIVITY

Use the built-in Wi-Fi and Internet browser to access your favorite technical forum, OEM web site or parts supplier. VERUS Wireless now even has long-range Class-1 Bluetooth® for wireless connection to the VERUS scan module throughout the shop.



POWER

The huge 250GB hard drive gives new meaning to data on demand. Store customer records, vehicle info or any software you need to get the job done. This open Microsoft® Windows® system lets you reference databases, check billing, manage scheduling and more. Performing multiple tasks no longer requires many tools.



PROFIT

Ultimately, the outcome of improved efficiency is higher profits. This tool enables you to get more jobs done in less time. When you add up all the benefits the revolutionary VERUS Wireless provides, you'll be adding up more repairs in less time.



Hardware:

- 10.4" high-resolution XGA 1024 x 768 touchscreen display
- One-touch navigation with touch-scroll
- Wi-Fi access and Internet browser
- Long-range Class-1 Bluetooth
- USB, VGA, LAN and audio ports
- 250GB internal hard drive

Software:

- Windows embedded for fast boot-up and true multi-tasking
- Streamlined navigation lets you get where you need to go up to 50% quicker
- One-touch access to the applications you use most, directly from the Home Screen
- Toggle between current vehicle, Home, Desktop, Help and more from the Toolbar
- Graph PIDs with just a finger tap
- Control window size, set triggers, auto-scale, record and playback with one touch of your finger
- Data Manager saves Scanner and Scope data and vehicle records
- Link directly to the most trusted source of repair information with the optional ShopKey® system

Scanner:

- A single keyless adaptor for 1996-later vehicles
- Connects wirelessly to the main unit with Bluetooth
- OEM-specific coverage for 40 makes, 1980-newer vehicles (European optional)
- Codes, live data, functional tests, relearns and adaptations for dozens of vehicle systems
- Troubleshooter with over 1 million code tips, symptom tips and timesavers

Scope/Multimeter:

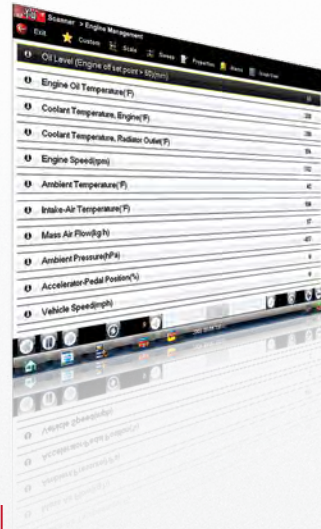
- 4-channel lab/ignition scope and digital/graphing meter
- Sample rate: 6 megasamples/second
- Scale range: 0 - 100mV to 0 - 400V, 50kV secondary ignition
- Sweep rate: 50 microseconds to 20 seconds (5 min in GMM mode)
- VDC, VAC, ohms, frequency, duty cycle and pulse width
- Fast-Track® guided tests for 40 domestic, Asian and European makes



It all starts with a new Home screen. Ten shortcuts take you to Scanner, Scope, Vehicle History, Data Manager, optional Repair Information and more with just one touch.



Start anywhere, go anywhere. Whether you open the Scanner or Component Test Meter, the automatic Vehicle Record Generator helps you quickly ID and save vehicle records as you go.



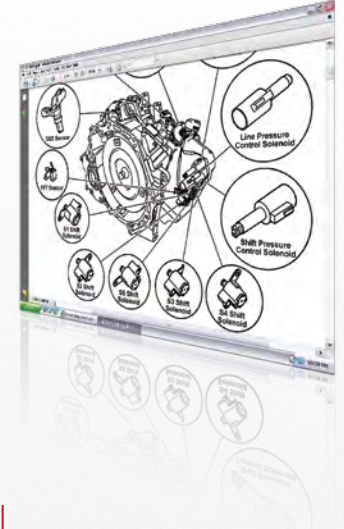
View PIDs with easy touch-scroll operation. Simply swipe your finger to scroll through the data. Fingertip controls size the window, set triggers, adjust scales and record data.



Touch any data PID to view it in text, graph or full-screen mode. View up to 16 live data graphs at once, to see true cause and effect.



The Component Test Meter displays guided component test procedures, live scope readings and known good waveforms side-by-side.



Our exclusive Fast-Track® reference information in the tool gives you hotlinks directly to component locators, wiring diagrams, exploded views and more.



CUSTOMER CARE SUPPORT

When you choose a Snap-on® diagnostic tool, you gain a long-term partner. Experienced Snap-on Customer Care Representatives are available to support you on our *Customer Care Hotline* at **800-424-7226**. Se habla español.

To learn more about any of our diagnostic solutions,
talk to your Snap-on representative or visit **diagnostics.snapon.com**

Snap-on is a trademark of Snap-on Incorporated. ©Snap-on Incorporated 2011. All other marks are trademarks of their respective holders. Pictures are for illustrative purposes only. Specifications are subject to change without notice. Some functions shown require an Internet connection.