



# ShopStream Connect Software Download and Installation Instructions

This document contains instructions for downloading ShopStream Connect™ software from the internet and installing it on a personal computer (PC), then using ShopStream Connect software to locate, download, and install program updates, or service releases. These instructions apply to ETHOS®, ETHOS+, MICROSCAN®, MICROSCAN III, MODIS™, MODIS Ultra, SOLUS™, SOLUS PRO™, SOLUS Ultra™, Vantage PRO™ and Vantage Ultra™ diagnostic tools.

ShopStream Connect software should only be installed on a personal computer (PC) meeting the minimum requirements listed below.

## 1.1 Verifying Minimum PC Requirements

---

**IMPORTANT:**

If your PC does not meet the minimum requirements, do not attempt to install the ShopStream Connect software.

---

Before installing the software, verify your PC meets the following requirements:

- System Properties:
  - Operating system—Windows® Vista, XP or Windows 7 (Windows XP must be updated to Microsoft .NET Framework Version 2)
  - Processor—Intel® Pentium 4 or later, or equivalent
  - Memory—256 MB minimum, 512 MB recommended
- Hard Drive—500 MB free space
- CD-ROM, DVD, or DVD-ROM drive
- USB 2.0 or later
- Internet Explorer 6.0 or higher
- Internet connection
- Adobe® Reader software (free download at [www.adobe.com/products/reader](http://www.adobe.com/products/reader))

A USB cable is also needed to connect the diagnostic tool to the PC. The type of USB cable needed varies by the type of diagnostic tool:

- ETHOS, ETHOS+, MICROSCAN III, MODIS, MODIS Ultra, SOLUS PRO, SOLUS Ultra, Vantage PRO and Vantage Ultra use a type mini A USB cable.
- SOLUS and MICROSCAN use a type A/B USB cable.

---

**IMPORTANT:**

Older MODIS units do not have a type mini A USB port, and therefore cannot be directly updated using ShopStream Connect. The USB port is located under the left handgrip on the circuit board near the side CF card slot. If there is no USB port, the program CF card (in the side slot) can be updated through ShopStream Connect using a CF card reader/writer.

---

A CompactFlash® (CF) card reader is also needed for updating SOLUS, Vantage PRO, and early MODIS units.

### 1.1.1 Verifying PC System Properties

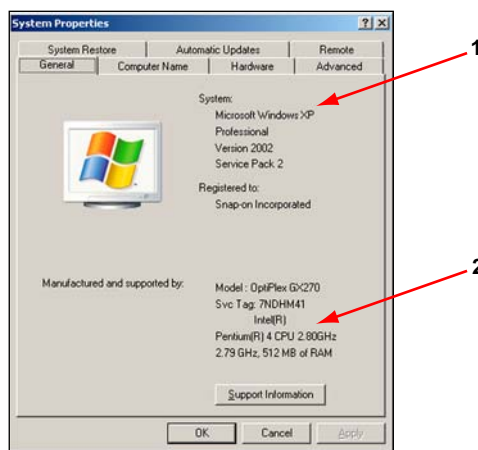
Follow the procedures below to check your PC system properties and to determine how much free space is available on your hard drive.



#### To check your PC system properties:

1. On the Desktop, right-click **My Computer** to open the menu.
2. Select **Properties** from the menu.

The **System Properties** dialog box displays with your system information (Figure 1-1).



1— System property information

2— Hard drive information

Figure 1-1 Sample Windows XP System Properties dialog box



#### To check PC hard drive free space:

1. On the Desktop, double-click **My Computer**.
2. Select **View > Details** (Figure 1-2).

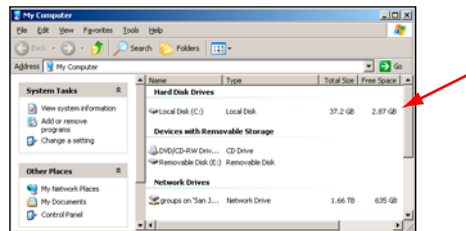


Figure 1-2 Sample PC hard drive free space details

## 1.2 Downloading and Installing ShopStream Connect

Follow the procedure below to download the ShopStream Connect software.



**To download the software:**

1. From your PC, using your Internet browser, go to <http://diagnostics.snapon.com/ssc>.
2. Locate the ShopStream Connect software download.
3. Follow the on-screen instructions.

After downloading, install the ShopStream Connect software onto your PC as follows.

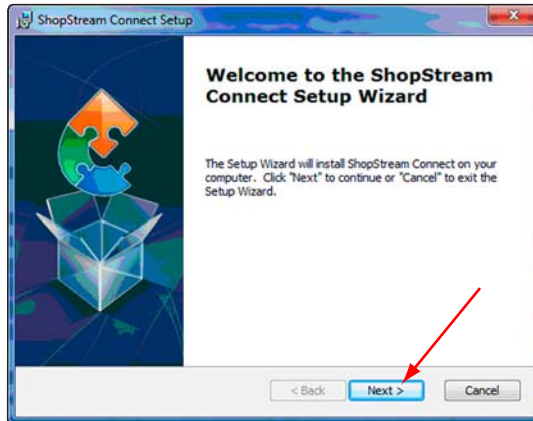


**To install the ShopStream Connect software:**

1. Locate the ShopStream Connect software installer that downloaded onto your PC, and then double-click **ShopStreamConnect.exe**.

The Setup Wizard launches and a welcome screen displays.

2. Select **Next** to begin the installation (Figure 1-3).



**Figure 1-3** Sample Welcome screen

A Software License Agreement screen opens.

3. From the License Agreement screen:
  - a. Scroll to read through the entire Snap-on Incorporated Software License Agreement.
  - b. Click to highlight the **I accept the terms of the license agreement** button.
  - c. Select **Next** to continue (Figure 1-4).

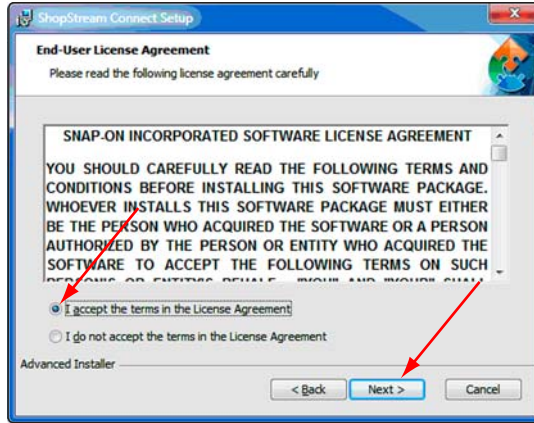


Figure 1-4 Sample License Agreement screen

A Ready to Install the screen displays.

4. Select the **Install** button to begin installation (Figure 1-5).

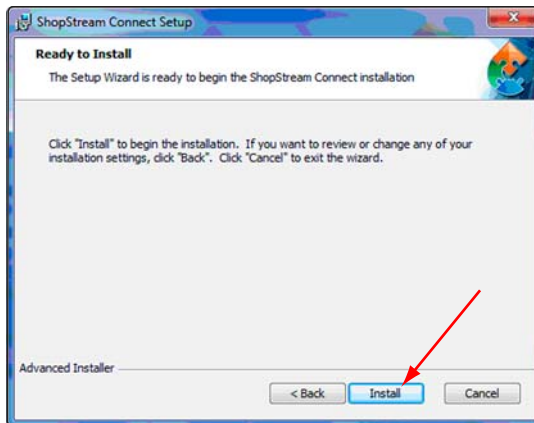


Figure 1-5 Sample ready to install screen

The Setup Status screen tracks progress as the program installs (Figure 1-6).

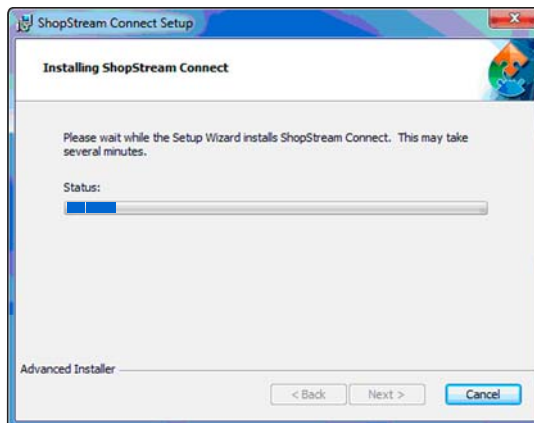
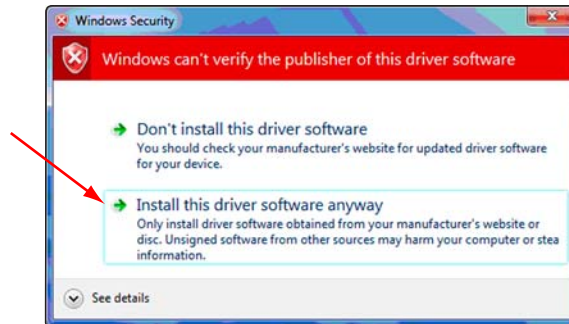


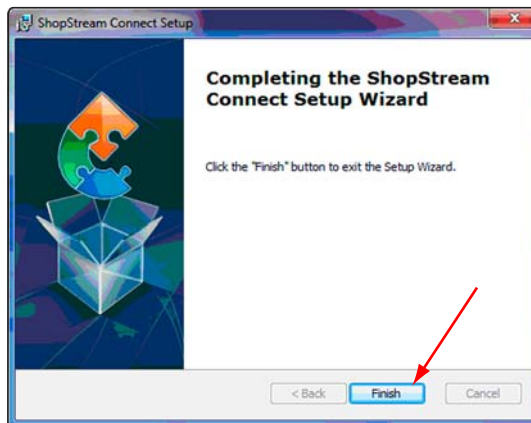
Figure 1-6 Sample Setup Status screen

A Windows Security message similar to the one shown in Figure 1-7 may open once or twice during the install. Select the second option—**Install this driver software anyway**—to continue and proceed with the installation should this happen.



**Figure 1-7** Sample Windows Software Installation message

5. Select **Finish** to close the Install Wizard when prompted (Figure 1-8).



**Figure 1-8** Sample Complete screen

A shortcut icon is added to the desktop (Figure 1-9).

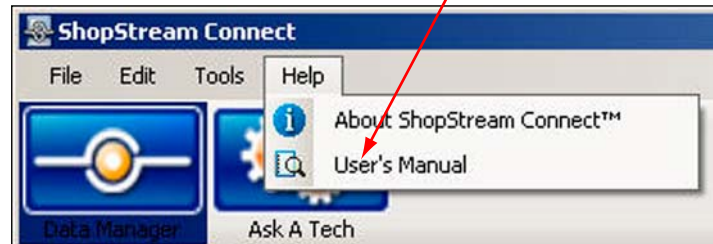


**Figure 1-9** Sample ShopStream Connect icon

6. Double-click the desktop icon to launch ShopStream Connect.

## 1.3 Downloading Service Updates

The ShopStream Connect software allows you to download service updates directly to your handheld diagnostic tools, as well as update its own software. The following pages contain a brief description for installing a service update on a handheld tool. Detailed procedures for updating the ShopStream Connect software, connecting handheld diagnostic tools to the PC, and other operations are found in the ShopStream Connect User Manual. The manual is available from the Help button on the ShopStream Connect toolbar (Figure 1-10).



**Figure 1-10** Sample ShopStream Connect help menu



**NOTE:**

Under certain circumstances, such as upon the initial connection of a tool to ShopStream Connect, available service releases are automatically downloaded to the tool.

### 1.3.1 Before You Begin

Have the following items on hand:

- A PC with ShopStream Connect software and an internet connection
- The AC/DC Power Adapter for your handheld diagnostic tool
- A CompactFlash® (CF) card reader for SOLUS, Vantage PRO, and early MODIS units
- A mini-USB cable for ETHOS, ETHOS+, MICROSCAN III, MODIS, MODIS Ultra, SOLUS PRO, SOLUS Ultra and Vantage Ultra units.
- A USB type A/B for MICROSCAN units

**IMPORTANT:**

An uninterrupted power source to the diagnostic tool is crucial during an update, as any loss of power may damage the tool and render it inoperative. Therefore, use of the AC/DC Power Adapter is highly recommended. Do not rely on used or partially charged batteries.

Using the accessories that came with your handheld diagnostic tool, connect it to a reliable power source with the AC/DC Power Supply and the PC with the USB cable.



**To connect ETHOS units:**

1. While holding down the **Y** and **N** buttons on the ETHOS unit, press the **Power** button. The ETHOS Service Menu opens.
2. Scroll to highlight **PC-Link** on the Service Menu, then press the **Y** button.
3. Plug the mini-USB cable into the ETHOS unit.











**To connect ETHOS+ units:**

1. Power on the ETHOS+ unit.
2. From the ETHOS+ Home screen select Tools, then **Connect-to-PC**.
3. Connect the mini-USB cable to the ETHOS+ unit.




**To connect MICROSCAN units:**

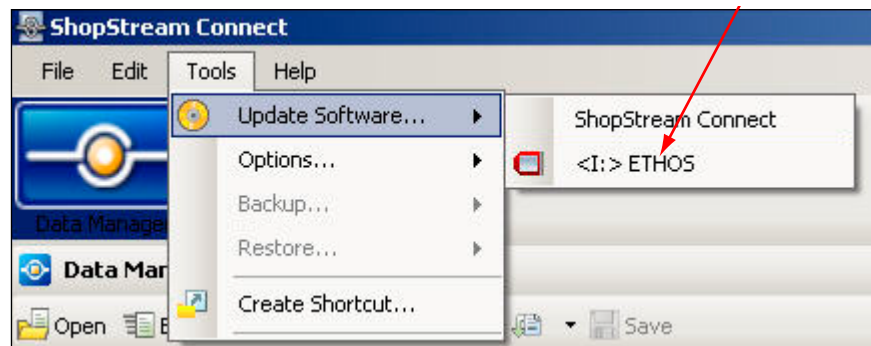
1. Connect the USB type A/B cable to the MICROSCAN unit.
2. Select the **Connect to PC (MSD Mode)** menu item on the MICROSCAN.

-  **To connect MICROSCAN III units:**
  1. Connect the mini-USB cable to the MICROSCAN III unit.
  2. Select the **Connect to PC (MSD Mode)** menu item on the MICROSCAN III.
-  **To connect MODIS units:**
  1. Remove the left handgrip from the MODIS unit.
  2. From the MODIS main menu select **Utilities** (wrench icon), then **Connect to PC**.
  3. Plug the mini-USB cable into the port on the MODIS unit.
-  **To connect MODIS Ultra units:**
  1. Power on the MODIS Ultra unit.
  2. From the MODIS Ultra Home screen select **Tools**, then **Connect to PC**.
  3. Plug the mini-USB cable into the MODIS Ultra unit, the select **Continue**.
  4. Select **Continue** from the confirmation screen.
-  **To connect SOLUS units:**
  1. Remove the CF card from the CF1 slot on the SOLUS unit.
  2. Insert the CF card into the card reader.
-  **To connect SOLUS PRO units:**
  1. Power on the SOLUS PRO unit.
  2. From the SOLUS PRO main menu select **Utilities** (wrench icon), then **Connect to PC**.
  3. Plug the mini-USB cable into the SOLUS PRO unit.
-  **To connect SOLUS Ultra units:**
  1. Power on the SOLUS Ultra unit.
  2. From the SOLUS Ultra Home screen select **Tools**, then **Connect to PC**.
  3. Plug the mini-USB cable into the SOLUS Ultra unit, the select **Continue**.
  4. Select **Continue** from the confirmation screen.
-  **To connect Vantage PRO units:**
  1. Remove the CF card from the CF1 slot on the Vantage PRO unit.
  2. Insert the CF card into the card reader.
-  **To connect Vantage Ultra units:**
  1. Power on the Vantage Ultra unit.
  2. From the Vantage Ultra Home screen select **Tools**, then **Connect to PC**.
  3. Plug the mini-USB cable into the Vantage Ultra unit, the select **Continue**.
  4. Select **Continue** from the confirmation screen.

### 1.3.2 Downloading the Software Service Release

-  **To download the service release:**
  1. Open ShopStream Connect on the PC.
  2. Access the **Tools** menu (Figure 1-11).
  3. Select **Update Software**.

- Click on the correct drive letter listing your diagnostic tool.



**Figure 1-11** Sample ShopStream Connect Tools menu

- When the ShopStream Connect Update Manager box appears, select **Download**.
- Once the download completes, select **Finish** to close the Update Manager box.
- Power down the diagnostic tool, then disconnect it from the PC.

### 1.3.3 Installing a Service Update

The handheld tool needs to be powered down and restarted in order to install the downloaded service update on the tool. The update process begins automatically when you power on your diagnostic tool, and is complete when the main menu or home screen displays.