

SNAP-ON INDUSTRIAL AIRFRAME TOOLS

AIRFRAME TOOLS

PRECISION TOOLS SINCE 1938.

With years of experience in Airframe tooling, we have every imaginable tool when it comes to Drilling, Countersinking, Riveting and Bucking procedures. When you need the right answer on Airframe maintenance and repair tools, we're unmatched in the market place. And if we don't have the right answer in stock, we have a full service staff of experts who can create a custom tool solution made to your specific needs that will have you covered.

Our manufacturing and quality control process adheres to very rigid standards that we stand behind.

AIRFRAME TOOLS



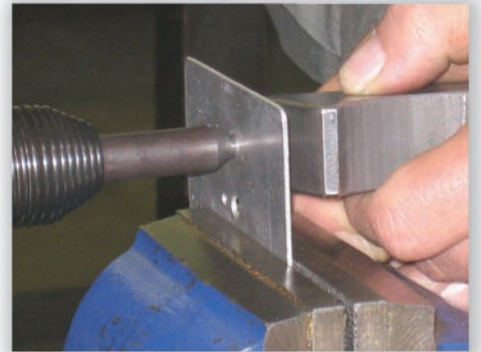
Drilling



Riveting



Countersinking



Bucking

AIRFRAME TOOLS

Snap-on Industrial specializes in commercial tools for airframe production, maintenance and repair. Our extensive product line spans from cable swaging, drilling and aluminum cutting to specialized torque tools and every imaginable tool for aviation airframe fasteners.

Snap-on Industrial has a full service design and engineering staff with the capability to build custom tools to your specific specifications.

All Snap-on Industrial airframe tools adhere to rigid manufacturing standards including:

Certified:

ISO 9001:2000 Certificate No.:

CERT-08745-2006-AQ-HOU-ANAB

ISO 14001-1996 Certificate No.: CERT-02711-2006-AEOHSAS

18001-1999 Certificate No.:

CERT-03904-2006-SOC-HOU-OHSAS





Adhere to:

ISO 190011 – Audit Standards
 ISO 17025 (ANSI NCSL-2540-1-1994)
 laboratory Calibration Standard
 ANSI/NCSL Z540-1, American National Standard
 for Calibration
 ANSI/ASQ Z1.4-2003 and MIL-STD-105E
 Sampling Inspection Plan

We also adhere to many other product specific standards:

MIL standards
 ANSI standards
 GOV standards
 ISO standards
 ASME standards
 NIST standards



Edge Breakers



AT1514

AT1514 Sheet Metal Edge Breaker.
Quickly removes burrs or sharp edges from any type of sheet metal stock with a hand shield to prevent injury. NSN #5110-01-428-9676



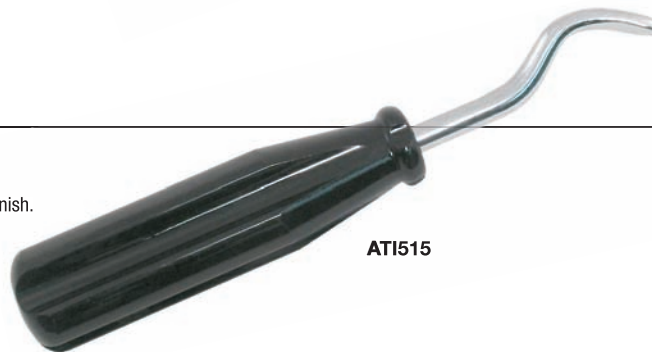
ATISP225

ATISP225 Carbide Double Edge Scraper.
Double-sided, indexable, carbide inserts, quickly removes burrs or sharp edges from any type or hardness of sheet metal stock with a hand shield to prevent injury. NSN #5110-01-368-5847

Burnishing Tools

AT1515 Burnish Tool.

Heat-treated blade is hard chrome plated and polished to mirror finish. Designed to remove surface blemishes on material. Large safety handle ensures comfortable grip. NSN #5120-01-428-5626



AT1515

Side Grip Clamps



AT1550SG

AT1550SG Spring Tension Side Grip Clamp - Pliers Operated.

This clamp accommodates a material capacity up to 3/4" thickness and reaches up to 1" in depth. The jaw (cast) with steel spring provides 60 pounds of clamping pressure. May be used in conjunction with optional AT1508S pliers.



AT1552SG

AT1552SG Spring Tension Side Grip Clamp - Pliers Operated.

This clamp accommodates a material capacity up to 1/2" thickness and reaches up to 1" in depth. The jaw (cast) with steel spring provides 60 pounds of clamping pressure. May be used in conjunction with optional AT1508S pliers.



AT1551SG

AT1551SG Spring Tension Side Grip Clamp - Pliers Operated.

This clamp accommodates a material capacity up to 3/4" thickness and reaches up to 1/2" in depth. The jaw (cast) with steel spring provides 60 pounds of clamping pressure. May be used in conjunction with optional AT1508S pliers.

Spring Tension Clamps



AT1542

AT1542 Spring Tension U - Clamp - Pliers Operated.

This clamp accommodates a material capacity up to 7/16" thickness and reaches up to 2" in depth. The Zamak alloy yoke (cast) and a steel spring which provides 70 pounds of clamping pressure. May be used in conjunction with optional AT1508S pliers. NSN #5120-01-428-5605



AT1542S

AT1542S Spring Tension U - Clamp - Pliers Operated.

This clamp accommodates a material capacity up to 7/16" thickness and reaches up to 2" in depth. The steel yoke is used where extreme heat would affect an alloy metal. The steel spring provides 70 pounds of clamping pressure. May be used in conjunction with optional AT1508S pliers. NSN #5120-01-428-5579

Mastic & Decal Removal Tool for T3 Aluminum

AT1590MRK Mastic Removal Kit.

Cool new item specifically designed for use on T-3 aluminum and other soft delicate surfaces to eliminate the possibility of scribe marks when removing mastics. Contains no Teflon™ or Silicon™. Each hand kit contains an ergonomic, vulcanized rubber handle, 6 -1" for-T3™ blades, 6 -1/2" for-T3™ blades, 3 -1/4" for-T3™ blades. Replacement for-T3 blades are available in the following sizes: Call for Quote.

Mastic Removal Kit Replacement Parts.

- 1/8" in packs of 10 or cartons of 200
- 1/4" in packs of 10 or cartons of 200
- 1/2" in packs of 10 or cartons of 200
- 3/4" in packs of 10 or cartons of 200
- 1" in packs of 10 or cartons of 200



AT1590MRK

Pliers, Spring Tension Clamps



AT1044P3

AT1044P3 Camloc Plier.

For Camloc Fasteners, stud series 2000, 2700 and 4002.



AT1508S

AT1508S Sheet Holder Plier.

Made from forged steel. Use on plier operated spring tension clamps and all spring loaded type fasteners. NSN #5120-01-368-3971



AT1508SG

AT1508SG Sheet Holder Plier with Grips.

Made from forged steel. Used with spring tension clamps and all spring loaded type fasteners.



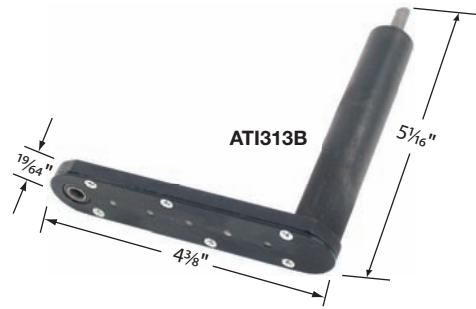
WARNING

- Airframe tooling can cause flying chips.
- Wear safety goggles (user and bystanders).



Angle Drills

Precision Gear-drive for Minimum Backlash and Reduced Friction.



AT1313B Drill Attachment - Flat Head - Gear Drive - Straight Offset.
Machined steel housing, recommended drill capacity 1/4", one to one drive ratio, 4 3/8" overall length, 15/16" width, 5 1/16" overall height, 19/64" thick gear drive body, 3 33/64" centerline distance from input shaft to output shaft, 27/64" from centerline of output shaft to end of housing, 1/4" diameter input shaft, #1/4"-28 female threaded output, high speed gear drive with anti-friction roller bearings.



AT1313LB Drill Attachment - Flat Head - Gear Drive - 60 Degree Right Hand Offset.
Machined steel housing, recommended drill capacity 1/4", one to one drive ratio, 3 15/16" overall length, 15/16" width, 5 1/16" overall height, 19/64" thick gear drive body, centerline distance from input shaft to output shaft is 3 3/32" by 7/8" of offset, 27/64" from centerline of output shaft to end of housing, 1/4" diameter input shaft, #1/4"-28 female threaded output, high quality gear drive with anti-friction roller bearings.



AT1313RB Drill Attachment - Flat Head - Gear Drive - 60 Degree Left Hand Offset.
Machined steel housing, recommended drill capacity 1/4", one to one drive ratio, 3 15/16" overall length, 15/16" width, 5 1/16" overall height, 19/64" thick gear drive body, centerline distance from input shaft to output shaft is 3 3/32" by 7/8" of offset, 27/64" from centerline of output shaft to end of housing, 1/4" diameter input shaft, #1/4"-28 female threaded output, high quality gear drive with anti-friction roller bearings.



AT1331B Drill Attachment - Flat Head - Gear Drive - Straight Offset.
Machined steel housing, recommended drill capacity 3/8", one to one drive ratio, 4 5/32" overall length, 15/16" width, 5 5/8" overall height, 29/64" thick gear drive body, 3 5/16" centerline distance from input shaft to output shaft, 11/32" from centerline of output shaft to end of housing, 1/4" diameter input shaft, #1/4"-28 female threaded output, high speed gear drive with anti-friction roller bearings with (grease) zerk fitting for easy maintenance.



AT1332A Drill Attachment - Flat Head - Gear Drive - Straight Offset.
Machined aluminum (hard anodized) housing, recommended drill capacity 1/4", one to one drive ratio, 3 3/16" overall length, 15/16" width, 2 5/16" overall height, 1/2" thick gear drive body, 2 7/16" centerline distance from input shaft to output shaft, 11/32" from centerline of output shaft to end of housing, 1/4" diameter input shaft, #10-32 female threaded output, high speed gear drive with anti-friction roller bearings with (grease) zerk fitting for easy maintenance.



AT1332B Drill Attachment - Flat Head - Gear Drive - Straight Offset.
Machined aluminum (hard anodized) housing, recommended drill capacity 1/4", one to one drive ratio, 3 3/16" overall length, 15/16" width, 2 5/16" overall height, 1/2" thick gear drive body, 2 7/16" centerline distance from input shaft to output shaft, 11/32" from centerline of output shaft to end of housing, 1/4" diameter input shaft, #1/4"-28 female threaded output, high speed gear drive with anti-friction roller bearings with (grease) zerk fitting for easy maintenance.



AT1332SC Drill Attachment - Flat Head - Gear Drive - Straight Offset.
Machined steel housing, recommended drill capacity 1/4", one to one drive ratio, 3 1/8" overall length, 15/16" width, 2 1/16" overall height, 11/32" thick gear drive body, 2 7/16" centerline distance from input shaft to output shaft, 5/16" from centerline of output shaft to end of housing, 1/4" diameter input shaft, #1/4"-28 female threaded output, high speed gear drive with anti-friction roller bearings.
NSN #5130-01-384-6398



AT1333B Drill Attachment - Flat Head - Gear Drive - Inverted 180 - Degree Straight Offset.
Machined aluminum (hard-anodized) housing, recommended drill capacity 1/4", one to one drive ratio, 3 13/16" overall length, 31/32" width, 2 5/16" overall height, 33/64" thick gear drive body, 3 7/64" centerline distance from input shaft to 180-degree rotated output shaft, 21/64" from centerline of output shaft to end of housing, 1/4" diameter input shaft, #1/4"-28 female threaded inverted output, high speed gear drive with anti-friction roller bearings.



ATI300B

ATI300B Drill Attachment - 7 1/16" Straight Drive - 90 - Degree Head Angle.
Sealed bearings, maintenance free straight drive drill attachment, recommended drill capacity 5/16", one to one drive ratio, 7 1/16" overall length includes the 90-degree angle head. 1/4" diameter input shaft, 1/4"-28 female threaded output head, 1 5/8" head height, 13/16" head width, 13/32" centerline of output shaft to outside circumference of head. NSN #5130-01-388-9904.



ATI326B

ATI326B Drill Attachment - 7" Straight Drive - 90 - Degree Head Angle.
Sealed bearings, maintenance free straight drive drill attachment, recommended drill capacity 3/16", one to one drive ratio, 7" overall length includes the 90-degree angle head. 1/4" diameter input shaft, 1/4"-28 female threaded output head, 27/32" head height, 17/32" head width, 17/64" centerline of output shaft to outside circumference of head. NSN #5130-01-388-9892



ATI336A

ATI336A Drill Attachment - 7 1/8" Straight Drive - 90 Degree Head Angle.
Sealed bearings, maintenance free straight drive drill attachment, recommended drill capacity 3/8", 1.5 to one drive ratio, 7 1/8" overall length includes the 90-degree angle head. 1/4" diameter input shaft, three jaw adjustable 1/4" capacity drill chuck, 1 9/16" head height, 15/16" head width, 15/32" centerline of drill chuck to outside circumference of head. NSN #5130-00-289-8163



ATI337B

ATI337B Drill Attachment - 7 3/16" Straight Drive - 360 Adjustable 90 - Degree Head Angle.
Sealed bearings, maintenance free straight drive drill attachment, recommended drill capacity 3/8", 1.5 to one drive ratio, 7 3/16" overall length includes a 3 5/32" offset rotating 90-degree angle head. 1/4" diameter input shaft, 1/4"-28 female threaded output head, 1 13/64" head height, 15/16" head width, 15/32" centerline of drill chuck to outside circumference of head. NSN #5130-01-388-9908



ATI302B

ATI302B Drill Attachment - 30" Flexible Drive - 90-Degree Head Angle.
Sealed bearings, maintenance free flexible drive drill attachment, recommended drill capacity 5/16", one to one drive ratio, 36 1/2" overall length includes 30" flexible drive plus 6 1/2" hand grip and the 90-degree angle head. 1/4" diameter input shaft, 1/4"-28 female threaded output head, 1 5/8" head height, 13/16" head width, 13/32" centerline of output shaft to outside circumference of head.



ATI303B

ATI303B Drill Attachment - 30" Flexible Drive - 45 - Degree Head Angle.
Sealed bearings, maintenance free flexible drive drill attachment, recommended drill capacity 5/16", one to one drive ratio, 37" overall length includes 30" flexible drive plus 7" hand grip and the 45-degree angle head. 1/4" diameter input shaft, 1/4"-28 female threaded output head, 1 5/8" head height, 13/16" head width, 13/32" centerline of output shaft to outside circumference of head.



ATI327B-24

ATI327B-24 Drill Attachment - 24" Flexible Drive - 90 - Degree Head Angle.
Sealed bearings, maintenance free flexible drive drill attachment, recommended drill capacity 5/16", one to one drive ratio, 30 3/4" overall length includes 24" flexible drive plus 6 3/4" hand grip and the 90-degree angle head. 1/4" diameter input shaft, 1/4"-28 female threaded output head, 27/32" head height, 17/32" head width, 17/64" centerline of output shaft to outside circumference of head.



ATI338B

ATI338B Drill Attachment - 24" Flexible Drive - 90 - Degree Head Angle.
Sealed bearings, maintenance free flexible drive drill attachment, recommended drill capacity 3/8", 1.5 to one drive ratio, 30 3/4" overall length includes 24" flexible drive plus 6 3/4" hand grip and the 90-degree angle head. 1/4" diameter input shaft, 1/4"-28 female threaded output head, 1 3/16" head height, 15/16" head width, 15/32" centerline of output shaft to outside circumference of head.



ATI339A

ATI339A Drill Attachment - 24" Flexible Drive - 360 - Degree Adjustable 90 - Degree Head.
Sealed bearings, maintenance free straight drive drill attachment, recommended drill capacity 3/8", 1.5 to one drive ratio, 31 1/16" overall length includes a 3 5/32" offset rotating 90-degree angle head. 1/4" diameter input shaft, three jaw adjustable 1/4" capacity drill chuck, 1 37/64" head height, 15/16" head width, 15/32" centerline of drill chuck to outside circumference of head. NSN #5130-01-388-9897



WARNING

- Airframe tooling can cause flying chips.
- Wear safety goggles (user and bystanders).



Note: See Threaded Drills on Page 89.

Drilling Accessories – Drill Bushings

ATI589A-098 Drill Guide Housing with #40 Bushing.

Consist of ATI589AA drill guide housing and ATI589AB098 threaded bushing. A hand-held guide to keep drills and taps at a 90-degree angle to a flat or curved skin surface. NSN #5120-01-316-2297

ATI589A-1285 Drill Guide Housing with #30 Bushing.

Consist of ATI589AA drill guide housing and ATI589AB1285 threaded bushing. A hand-held guide to keep drills and taps at a 90-degree angle to a flat or curved skin surface. NSN #5120-01-316-2298

ATI589A-159 Drill Guide Housing with #21 Bushing.

Consist of ATI589AA drill guide housing and ATI589AB159 threaded bushing. A hand-held guide to keep drills and taps at a 90-degree angle to a flat or curved skin surface. NSN #5120-01-046-2931

ATI589A-1935 Drill Guide Housing with #10 Bushing.

Consist of ATI589AA drill guide housing and ATI589AB1935 threaded bushing. A hand-held guide to keep drills and taps at a 90-degree angle to a flat or curved skin surface. NSN #5120-01-046-2928

ATI589A257 Drill Guide Housing with "F" Drill Bushing.

Consist of ATI589AA drill guide housing and ATI589AB257 threaded bushing. A hand-held guide to keep drills and taps at a 90-degree angle to a flat or curved skin surface.

ATI589AB098 Threaded Drill Bushing - #40.

Interchangeable threaded drill bushing used with ATI589AA drill guide housing. Carburized steel treatment for extended durability.

ATI589AB1562 Threaded Drill Bushing - 5/32".

Interchangeable threaded drill bushing used with ATI589AA drill guide housing. Carburized steel treatment for extended durability.

ATI589AB1875 Threaded Drill Bushing - 3/16".

Interchangeable threaded drill bushing used with ATI589AA drill guide housing. Carburized steel treatment for extended durability.

ATI589AB2187 Threaded Drill Bushing - 7/32".

Interchangeable threaded drill bushing used with ATI589AA drill guide housing. Carburized steel treatment for extended durability.

ATI589AB-257 Threaded Drill Bushing - "F".

Interchangeable threaded drill bushing used with ATI589AA drill guide housing. Carburized steel treatment for extended durability.

ATI589A2187



ATI589A161 Drill Guide Housing with #20 Bushing.

Consist of ATI589AA drill guide housing and ATI589AB161 threaded bushing. A hand-held guide to keep drills and taps at a 90-degree angle to a flat or curved skin surface.

ATI589A2187 Drill Guide Housing with 7/32" Bushing.

Consist of ATI589AA drill guide housing and ATI589AB2187 threaded bushing. A hand-held guide to keep drills and taps at a 90-degree angle to a flat or curved skin surface.

ATI589AB1285 Threaded Drill Bushing - #30.

Interchangeable threaded drill bushing used with ATI589AA drill guide housing. Carburized steel treatment for extended durability.

ATI589AB159 Threaded Drill Bushing - #21.

Interchangeable threaded drill bushing used with ATI589AA drill guide housing. Carburized steel treatment for extended durability.

ATI589AB-190 Threaded Drill Bushing - .190".

Interchangeable threaded drill bushing used with ATI589AA drill guide housing. Carburized steel treatment for extended durability.

ATI589AB-247 Threaded Drill Bushing - "D".

Interchangeable threaded drill bushing used with ATI589AA drill guide housing. Carburized steel treatment for extended durability.

ATI589AB-281 Threaded Drill Bushing - "K".

Interchangeable threaded drill bushing used with ATI589AA drill guide housing. Carburized steel treatment for extended durability.

ATI589A257



Polycarbonate Housing.

ATI589A-1875 Drill Guide Housing with 3/16" Bushing.

Consist of ATI589AA drill guide housing and ATI589AB1875 threaded bushing. A hand-held guide to keep drills and taps at a 90-degree angle to a flat or curved skin surface.

ATI589A250 Drill Guide Housing with 1/4" Bushing.

Consist of ATI589AA drill guide housing and ATI589AB250 threaded bushing. A hand-held guide to keep drills and taps at a 90-degree angle to a flat or curved skin surface.



ATI589AB1935

Case Hardened Bushings.

ATI589AB-161 Threaded Drill Bushing - #20.

Interchangeable threaded drill bushing used with ATI589AA drill guide housing. Carburized steel treatment for extended durability.

ATI589AB1935 Threaded Drill Bushing - #10.

Interchangeable threaded drill bushing used with ATI589AA drill guide housing. Carburized steel treatment for extended durability.

ATI589AB250 Threaded Drill Bushing - 1/4".

Interchangeable threaded drill bushing used with ATI589AA drill guide housing. Carburized steel treatment for extended durability.

ATI589AB-310 Threaded Drill Bushing - .310.

Interchangeable threaded drill bushing used with ATI589AA drill guide housing. Carburized steel treatment for extended durability.



ATI589CA

ATI589CA Drill Guide Housing Only.
Hand-held guide to keep drills and taps at a 90-degree angle to a flat or curved skin surface. The polycarbonate housing accepts the ATI589CB family of threaded drill bushings sold separately.

ATI589AA Drill Guide Housing Only.
Hand-held guide to keep drills and taps at a 90-degree angle to a flat or curved skin surface. The polycarbonate housing accepts the ATI589AB family of threaded drill bushings sold separately.

ATI589CB375 Threaded Drill Bushings.
Interchangeable threaded drill bushing used with ATI589CA drill guide housing. Carburized steel treatment for extended durability.

ATI589CB3125 Threaded Drill Bushings.
Interchangeable threaded drill bushing used with ATI589CA drill guide housing. Carburized steel treatment for extended durability.



ATI589DA

ATI589DA Flange Lock Drill Bushing.
A hand-held guide to keep #80 (.0135) through #10 (.1935) drills and taps at a 90-degree angle to a flat or curved skin surface. Accepts 5/16" outside diameter bushing. The guide assembly consists of a polycarbonate housing with steel liner bushing, with lock-in lug for standard slip renewable drill bushings.



ATI589EA

ATI589EA Flange Lock Drill Bushing.
A hand-held guide to keep #28 (.1405) through 11/32" (.3438) drills and taps at a 90-degree angle to a flat or curved skin surface. Accepts 1/2" outside diameter bushing. The guide assembly consists of a polycarbonate housing with steel liner bushing, with lock-in lug for standard slip renewable drill bushings.



ATI590DBK

ATI590DBK Drill Bushing Kit.
Kit includes three polycarbonate (egg-cups) and nine bushings for drill sizes #40, #30, 5/32", #21, 3/16", #10, 7/32", 1/4", maintains tool perpendicular to skin surface.



WARNING

- Airframe tooling can cause flying chips.
- Wear safety goggles (user and bystanders).



Drill Adaptors

Straight Shank Drill Solutions for Threaded Spindles.



ATI503-30



ATI503-30 Drill Adaptor #30.
1/4-28 threaded shank with 60 degree seating angle, drill is held securely by set screw. Used with angle and pancake drills.

ATI503-40



ATI503-40 Drill Adaptor #40.
1/4-28 threaded shank with 60 degree seating angle, drill is held securely by set screw. Used with angle and pancake drills.

ATI503-72



ATI503-72 Drill Adaptor 1/4".
1/4-28 threaded shank with 60 degree seating angle, drill is held securely by set screw. Used with angle and pancake drills.



ATI503C-1/4

ATI503C-1/4 Drill Collet Adaptor - 1/4".
1/4-28 threaded shank, drill is held securely by tightening collet cap to base. Used with angle and pancake drills.

ATI503C-1/8 Drill Collet Adaptor - 1/8".
1/4-28 threaded shank, drill is held securely by tightening collet cap to base. Used with angle and pancake drills.

ATI503C-3/32 Drill Collet Adaptor - 3/32".
1/4-28 threaded shank, drill is held securely by tightening collet cap to base. Used with angle and pancake drills.

ATI503C-10 Drill Collet Adaptor - #10.
1/4-28 threaded shank, drill is held securely by tightening collet cap to base. Used with angle and pancake drills.

ATI503C-30 Drill Collet Adaptor - #30.
1/4-28 threaded shank, drill is held securely by tightening collet cap to base. Used with angle and pancake drills.

ATI503C-11 Drill Collet Adaptor - #11.
1/4-28 threaded shank, drill is held securely by tightening collet cap to base. Used with angle and pancake drills.

ATI503C-40 Drill Collet Adaptor - #40.
1/4-28 threaded shank, drill is held securely by tightening collet cap to base. Used with angle and pancake drills.

ATI503C-21 Drill Collet Adaptor - #21.
1/4-28 threaded shank, drill is held securely by tightening collet cap to base. Used with angle and pancake drills.

ATI503C-5/32 Drill Collet Adaptor - 5/32".
1/4-28 threaded shank, drill is held securely by tightening collet cap to base. Used with angle and pancake drills.

ATI503C-3/16 Drill Collet Adaptor - 3/16".
1/4-28 threaded shank, drill is held securely by tightening collet cap to base. Used with angle and pancake drills.

ATI503C-7/32 Drill Collet Adaptor - 7/32".
1/4-28 threaded shank, drill is held securely by tightening collet cap to base. Used with angle and pancake drills.

Drill Chuck

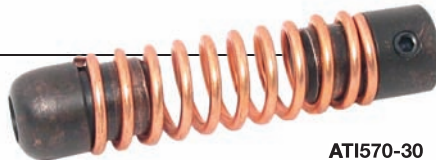
ATI339EC Chuck-Three Jaw.
1/16" to 1/4" chuck is used with angle drills with 1/4"-28 threaded spindles, allowing the use of straight shank tools. NSN #5130-01-368-5849



ATI339EC

Drill Stops

ATI570-1/4 Drill Stop - 1/4".
Controls hole depth, cushion the break-through, unique rounded face prevents chuck jaws from coming in contact with the skin surface. Unit locks to drill with a set screws. NSN #5120-01-066-2854



ATI570-30

Primarily designed to control hole depth, this tool will also cushion the break-through of a drill and prevent chuck jaws from coming in contact with the skin surface. Unit locks on drill with a set screw.

ATI570-10 Drill Stop - #10.
Controls hole depth, cushion the break-through, unique rounded face prevents chuck jaws from coming in contact with the skin surface. Unit locks to drill with a set screws. NSN #5120-01-105-6772

ATI570-11 Drill Stop - #11.
Controls hole depth, cushion the break-through, unique rounded face prevents chuck jaws from coming in contact with the skin surface. Unit locks to drill with a set screws. NSN #5120-01-513-0147

ATI570-12 Drill Stop - #12.
Controls hole depth, cushion the break-through, unique rounded face prevents chuck jaws from coming in contact with the skin surface. Unit locks to drill with a set screws. NSN #5120-01-053-7937

ATI570-20 Drill Stop - #20.
Controls hole depth, cushion the break-through, unique rounded face prevents chuck jaws from coming in contact with the skin surface. Unit locks to drill with a set screws. NSN #5120-01-046-5003

ATI570-21 Drill Stop - #21.
Controls hole depth, cushion the break-through, unique rounded face prevents chuck jaws from coming in contact with the skin surface. Unit locks to drill with a set screws. NSN #5120-01-104-5376

ATI570-30 Drill Stop - #30.
Controls hole depth, cushion the break-through, unique rounded face prevents chuck jaws from coming in contact with the skin surface. Unit locks to drill with a set screws. NSN #5120-01-107-2181

ATI570-40 Drill Stop - #40.
Controls hole depth, cushion the break-through, unique rounded face prevents chuck jaws from coming in contact with the skin surface. Unit locks to drill with a set screws. NSN #5120-01-094-0027

ATI570-5/16 Drill Stop - 5/16".
Controls hole depth, cushion the break-through, unique rounded face prevents chuck jaws from coming in contact with the skin surface. Unit locks to drill with a set screws. NSN #5120-01-046-4995

Threaded Drills



ATISSL1/4

ATISSL1/4 1/4" - 28 Thread Shank Drill Bit - 1/4" Diameter.
1/4"-28 threaded shank, 135-degree split point, 2 1/8" long (1-13/16" drill length plus 5/16" nut length). (Long).



ATIHSSH1/4

ATIHSSH1/4 1/4" - 28 Thread Shank Drill Bit - 1/4" Diameter.
1/4"-28 threaded shank, 135-degree split point, 1 1/4" long (15/16" drill length plus 5/16" nut length). (Long). NSN #5133-01-546-6317



ATIHSSH1/8

ATIHSSH1/8 1/4" - 28 Thread Shank Drill Bit - 1/8" Diameter.
1/4"-28 threaded shank, 135-degree split point, 1" long (3/4" drill length plus 1/4" nut length). (Short). NSN #5133-01-546-6313



ATIHSSH5/32

ATIHSSH5/32 1/4" - 28 Thread Shank Drill Bit - 5/32" Diameter.
1/4"-28 threaded shank, 135-degree split point, 1 1/4" long (1" drill length plus 1/4" nut length). (Short). NSN #5133-01-546-6314



ATIHSSH3/16

ATIHSSH3/16 1/4" - 28 Thread Shank Drill Bit - 3/16" Diameter.
1/4"-28 threaded shank, 135-degree split point, 1 1/4" long (1" drill length plus 1/4" nut length). (Short). NSN #5133-01-546-6315



ATIHSSST1/8

ATIHSSST1/8 1/4" - 28 Thread Shank Drill Bit - 1/8" Diameter.
1/4"-28 threaded shank, 135-degree split point, 1/2" long (3/8" drill length plus 1/8" nut length). (Stub).



ATIHSSST3/16

ATIHSSST3/16 1/4" - 28 Thread Shank Drill Bit - 3/16" Diameter.
1/4"-28 threaded shank, 135-degree split point, 9/16" long (7/16" drill length plus 1/8" nut length). (Stub).



ATIHSSST1/4

ATIHSSST1/4 1/4" - 28 Thread Shank Drill Bit - 1/4" Diameter.
1/4"-28 threaded shank, 135-degree split point, 5/8" long (3/8" drill length plus 1/4" nut length). (Stub).



WARNING

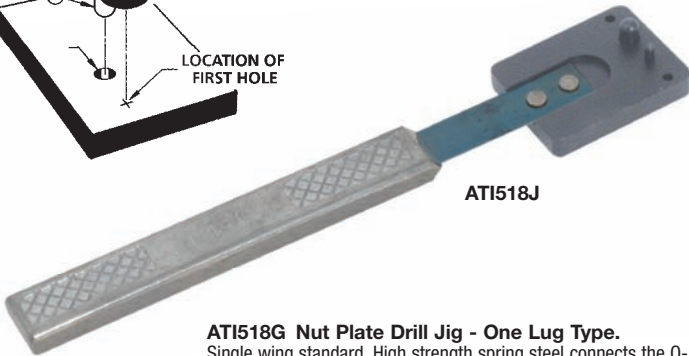
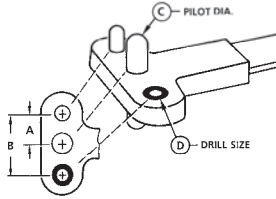
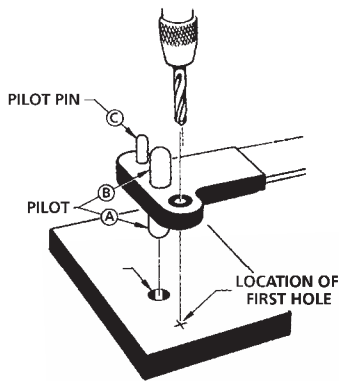
- Airframe tooling can cause flying chips.
- Wear safety goggles (user and bystanders).



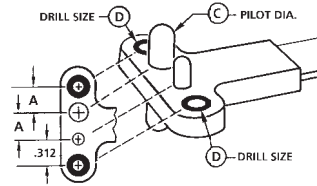
Nut Plate Drill Jigs



AT1518C



AT1518J

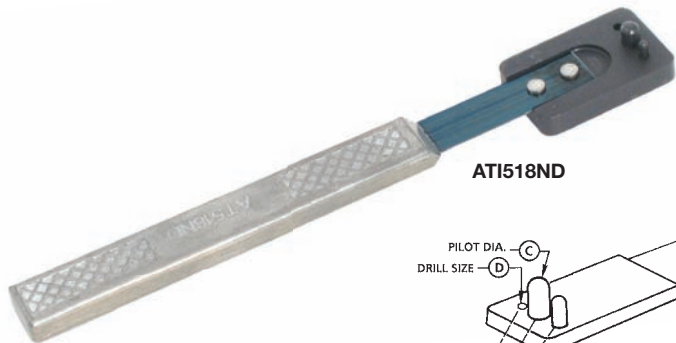


AT1518G Nut Plate Drill Jig - One Lug Type.
Single wing standard. High strength spring steel connects the 0-1 hardened head to the aluminum knurled handle. A=.344", C=.139", D=#40, bolt size reference #6. NSN #5130-01-368-5866

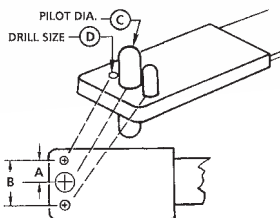
AT1518J Nut Plate Drill Jig - One Lug Type.
Single wing standard. High strength spring steel connects the 0-1 hardened head to the aluminum knurled handle. A=.344", C=.191", D=#40, bolt size reference #10. NSN #3465-01-025-1562

AT1518H Nut Plate Drill Jig - One Lug Type.
Single wing standard. High strength spring steel connects the 0-1 hardened head to the aluminum knurled handle. A=.344", C=.164", D=#40, bolt size reference #8. NSN #3465-01-025-9759

AT1518K Nut Plate Drill Jig - One Lug Type.
Single wing standard. High strength spring steel connects the 0-1 hardened head to the aluminum knurled handle. A=.344", C=.248", D=#40, bolt size reference 1/4". NSN #3465-01-014-9129



AT1518ND



AT1518NA Nut Plate Drill Jig - Two Lug Type.
Double wing miniature. High strength spring steel connects the 0-1 hardened head to the aluminum knurled handle. A=.203", B=.406", C=.112", D=#40, bolt size reference #4. NSN #5130-01-411-8177

AT1518NB Nut Plate Drill Jig - Two Lug Type.
Double wing miniature. High strength spring steel connects the 0-1 hardened head to the aluminum knurled handle. A=.218", B=.436", C=.139", D=#40, bolt size reference #6. NSN #5130-01-411-8180

AT1518NC Nut Plate Drill Jig - Two Lug Type.
Double wing miniature. High strength spring steel connects the 0-1 hardened head to the aluminum knurled handle. A=.234", B=.468", C=.164", D=#40, bolt size reference #8. NSN #5130-01-411-8179

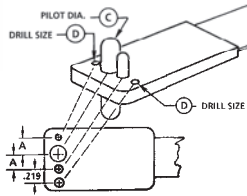
AT1518ND Nut Plate Drill Jig - Two Lug Type.
Double wing miniature. High strength spring steel connects the 0-1 hardened head to the aluminum knurled handle. A=.250", B=.500", C=.191", D=#40, bolt size reference #10. NSN #5130-01-411-8182

AT1518NE Nut Plate Drill Jig - Two Lug Type.
Double wing miniature. High strength spring steel connects the 0-1 hardened head to the aluminum knurled handle. A=.281", B=.562", C=.248", D=#40, bolt size reference 1/4". NSN #5130-01-411-8181



AT1518PB

Ergonomic Cast Aluminum Handle with Heat - Treated Spring Steel Attached to Oil Hardened Tool Steel Head.



AT1518PB Nut Plate Drill Jig - One Lug Type.

Single wing miniature. High strength spring steel connects the 0-1 hardened head to the aluminum knurled handle. A=.218", C=.139", D=#40, bolt size reference #6. NSN #5130-01-411-8185

AT1518PC Nut Plate Drill Jig - One Lug Type.

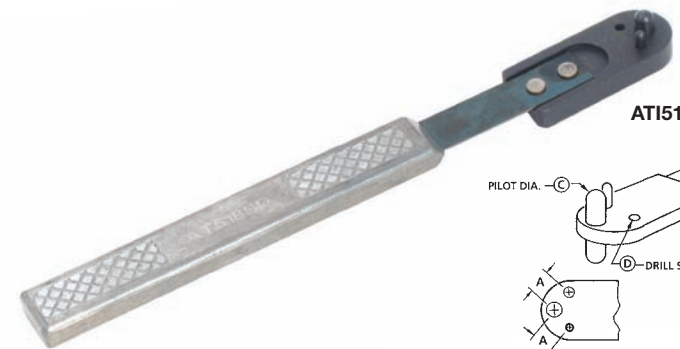
Single wing miniature. High strength spring steel connects the 0-1 hardened head to the aluminum knurled handle. A=.234", C=.164", D=#40, bolt size reference #8. NSN #5130-01-411-8183

AT1518PD Nut Plate Drill Jig - One Lug Type.

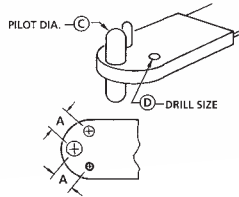
Single wing miniature. High strength spring steel connects the 0-1 hardened head to the aluminum knurled handle. A=.250", C=.191", D=#40, bolt size reference #10. NSN #5130-01-411-8184

AT1518PE Nut Plate Drill Jig - One Lug Type.

Single wing miniature. High strength spring steel connects the 0-1 hardened head to the aluminum knurled handle. A=.281", C=.248", D=#40, bolt size reference 1/4". NSN #5130-01-411-8172



AT1518SD



AT1518SC Nut Plate Drill Jig - Corner Type.

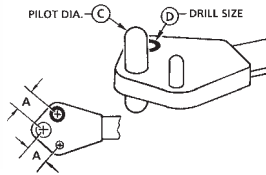
Corner wing miniature. High strength spring steel connects the 0-1 hardened head to the aluminum knurled handle. A=.281", C=.248", D=#40, bolt size reference #8. NSN #5130-01-374-1358

AT1518SD Nut Plate Drill Jig - Corner Type.

Corner wing miniature. High strength spring steel connects the 0-1 hardened head to the aluminum knurled handle. A=.250", C=.191", D=#40, bolt size reference #10. NSN #5130-01-411-8173



AT1518U

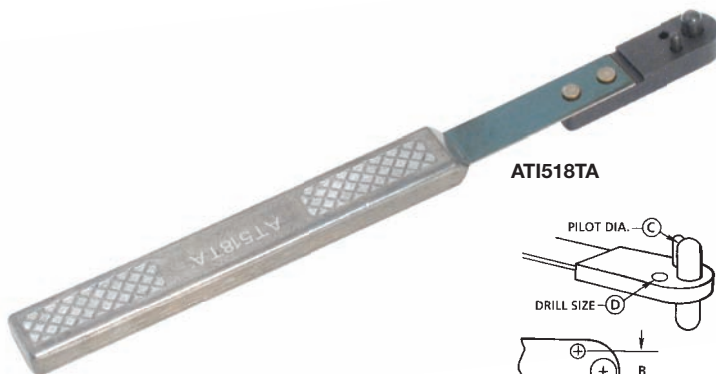


AT1518T Nut Plate Drill Jig - Corner Type.

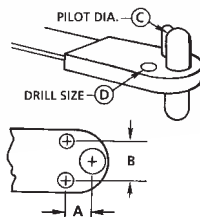
Corner wing standard. High strength spring steel connects the 0-1 hardened head to the aluminum knurled handle. A=.344", C=.191", D=#40, bolt size reference #10. NSN #5130-01-368-5871

AT1518U Nut Plate Drill Jig - Corner Type.

Corner wing standard. High strength spring steel connects the 0-1 hardened head to the aluminum knurled handle. A=.500", C=.248", D=#40, bolt size reference 1/4". NSN #3465-01-014-9128



AT1518TA



AT1518TA Nut Plate Drill Jig - Miniature Anchornut Type.

Single lug miniature. High strength spring steel connects the 0-1 hardened head to the aluminum knurled handle. A=.250", B=.219", C=.191", D=#40, bolt size reference #10. NSN #5130-01-513-0149



WARNING

- Airframe tooling can cause flying chips.
- Wear safety goggles (user and bystanders).



Hole Saws

Precision High Speed Steel.



ATI413-2

ATI413-2 Hole Saw - Fine Tooth.

7/16" Cutting diameter, 5/16"-24 threaded arbor hole for cutting thin aluminum skins and corrugation sheets. Use ATI415-0 or ATI415-1 Arbor.

ATI413-11 Hole Saw - Fine Tooth.

1" Cutting diameter, 5/16"-24 threaded arbor hole for cutting thin aluminum skins and corrugation sheets. Use ATI415-0 or ATI415-1 Arbor.

ATI474-3 Hole Saw - Coarse Tooth.

1/2" Cutting diameter, 5/16"-24 threaded arbor hole. Used for fast and effective cutting of aluminum and steel. Use ATI415-0 or ATI415-1 arbor.

ATI474-19 Hole Saw - Coarse Tooth.

1 1/2" Cutting diameter, 1/2"-20 threaded arbor hole. Used for fast and effective cutting of aluminum and steel. Use ATI415-2 or ATI415-3 arbor.

ATI474-31 Hole Saw - Coarse Tooth.

2 1/4" Cutting diameter, 1/2"-20 threaded arbor hole. Used for fast and effective cutting of aluminum and steel. Use ATI415-2 or ATI415-3 arbor.

ATI474-4 Hole Saw - Coarse Tooth.

9/16" Cutting diameter, 5/16"-24 threaded arbor hole. Used for fast and effective cutting of aluminum and steel. Use ATI415-0 or ATI415-1 arbor.

ATI474-20 Hole Saw - Coarse Tooth.

1 9/16" Cutting diameter, 1/2"-20 threaded arbor hole. Used for fast and effective cutting of aluminum and steel. Use ATI415-2 or ATI415-3 arbor.

ATI474-32 Hole Saw - Coarse Tooth.

2 5/16" Cutting diameter, 1/2"-20 threaded arbor hole. Used for fast and effective cutting of aluminum and steel. Use ATI415-2 or ATI415-3 arbor.

ATI474-5 Hole Saw - Coarse Tooth.

5/8" Cutting diameter, 5/16"-24 threaded arbor hole. Used for fast and effective cutting of aluminum and steel. Use ATI415-0 or ATI415-1 arbor.

ATI474-21 Hole Saw - Coarse Tooth.

1 5/8" Cutting diameter, 1/2"-20 threaded arbor hole. Used for fast and effective cutting of aluminum and steel. Use ATI415-2 or ATI415-3 arbor.

ATI474-33 Hole Saw - Coarse Tooth.

2 3/8" Cutting diameter, 1/2"-20 threaded arbor hole. Used for fast and effective cutting of aluminum and steel. Use ATI415-2 or ATI415-3 arbor.

ATI474-6 Hole Saw - Coarse Tooth.

11/16" Cutting diameter, 5/16"-24 threaded arbor hole. Used for fast and effective cutting of aluminum and steel. Use ATI415-0 or ATI415-1 arbor.

ATI474-22 Hole Saw - Coarse Tooth.

1 11/16" Cutting diameter, 1/2"-20 threaded arbor hole. Used for fast and effective cutting of aluminum and steel. Use ATI415-2 or ATI415-3 arbor.

ATI474-35 Hole Saw - Coarse Tooth.

2 1/2" Cutting diameter, 1/2"-20 threaded arbor hole. Used for fast and effective cutting of aluminum and steel. Use ATI415-2 or ATI415-3 arbor.

ATI474-7 Hole Saw - Coarse Tooth.

3/4" Cutting diameter, 5/16"-24 threaded arbor hole. Used for fast and effective cutting of aluminum and steel. Use ATI415-0 or ATI415-1 arbor.

ATI474-23 Hole Saw - Coarse Tooth.

1 3/4" Cutting diameter, 1/2"-20 threaded arbor hole. Used for fast and effective cutting of aluminum and steel. Use ATI415-2 or ATI415-3 arbor.

ATI474-38 Hole Saw - Coarse Tooth.

2 11/16" Cutting diameter, 1/2"-20 threaded arbor hole. Used for fast and effective cutting of aluminum and steel. Use ATI415-2 or ATI415-3 arbor.

ATI474-8 Hole Saw - Coarse Tooth.

13/16" Cutting diameter, 5/16"-24 threaded arbor hole. Used for fast and effective cutting of aluminum and steel. Use ATI415-0 or ATI415-1 arbor.

ATI474-25 Hole Saw - Coarse Tooth.

1 7/8" Cutting diameter, 1/2"-20 threaded arbor hole. Used for fast and effective cutting of aluminum and steel. Use ATI415-2 or ATI415-3 arbor.

ATI474-39 Hole Saw - Coarse Tooth.

2 3/4" Cutting diameter, 1/2"-20 threaded arbor hole. Used for fast and effective cutting of aluminum and steel. Use ATI415-2 or ATI415-3 arbor.

ATI474-9 Hole Saw - Coarse Tooth.

7/8" Cutting diameter, 5/16"-24 threaded arbor hole. Used for fast and effective cutting of aluminum and steel. Use ATI415-0 or ATI415-1 arbor.

ATI474-26 Hole Saw - Coarse Tooth.

1 15/16" Cutting diameter, 1/2"-20 threaded arbor hole. Used for fast and effective cutting of aluminum and steel. Use ATI415-2 or ATI415-3 arbor.

ATI474-40 Hole Saw - Coarse Tooth.

2 13/16" Cutting diameter, 1/2"-20 threaded arbor hole. Used for fast and effective cutting of aluminum and steel. Use ATI415-2 or ATI415-3 arbor.

ATI474-11 Hole Saw - Coarse Tooth.

1" Cutting diameter, 5/16"-24 threaded arbor hole. Used for fast and effective cutting of aluminum and steel. Use ATI415-0 or ATI415-1 arbor.

ATI474-27 Hole Saw - Coarse Tooth.

2" Cutting diameter, 1/2"-20 threaded arbor hole. Used for fast and effective cutting of aluminum and steel. Use ATI415-2 or ATI415-3 arbor.

ATI474-41 Hole Saw - Coarse Tooth.

2 7/8" Cutting diameter, 1/2"-20 threaded arbor hole. Used for fast and effective cutting of aluminum and steel. Use ATI415-2 or ATI415-3 arbor.

ATI474-13 Hole Saw - Coarse Tooth.

1 1/8" Cutting diameter, 5/16"-24 threaded arbor hole. Used for fast and effective cutting of aluminum and steel. Use ATI415-0 or ATI415-1 arbor.

ATI474-28 Hole Saw - Coarse Tooth.

2 1/16" Cutting diameter, 1/2"-20 threaded arbor hole. Used for fast and effective cutting of aluminum and steel. Use ATI415-2 or ATI415-3 arbor.



ATI474-15

ATI474-15 Hole Saw - Coarse Tooth.

1 1/4" Cutting diameter, 5/16"-24 threaded arbor hole. Used for fast and effective cutting of aluminum and steel. Use ATI415-0 or ATI415-1 arbor.

ATI474-29 Hole Saw - Coarse Tooth.

2 1/8" Cutting diameter, 1/2"-20 threaded arbor hole. Used for fast and effective cutting of aluminum and steel. Use ATI415-2 or ATI415-3 arbor.

ATI474-17 Hole Saw - Coarse Tooth.

1 3/8" Cutting diameter, 1/2"-20 threaded arbor hole. Used for fast and effective cutting of aluminum and steel. Use ATI415-2 or ATI415-3 arbor.



ATI474-22

ATI474-18 Hole Saw - Coarse Tooth.

1 7/16" Cutting diameter, 1/2"-20 threaded arbor hole. Used for fast and effective cutting of aluminum and steel. Use ATI415-2 or ATI415-3 arbor.



ATI474-26

Maintains Cutting Edge and Stays Sharp Longer.

Hole Saw Arbors

ATI415-0 Hole Saw Arbor.

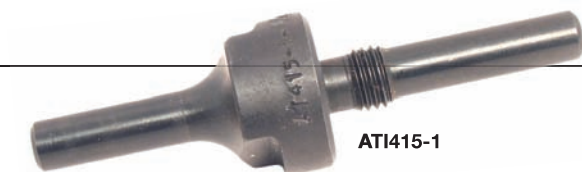
1/4" shank and 3/16" pilot diameters are ground between centers, 5/16"-24 threaded arbor. For use with ATI413 and ATI474-(1 through 15) Hole Saws.

ATI415-1 Hole Saw Arbor.

1/4" shank and 1/4" pilot diameters are ground between centers, 5/16"-24 threaded arbor. For use with ATI413 and ATI474-(1 through 15) Hole Saws.

ATI415-2 Hole Saw Arbor.

1/2" shank and 1/4" pilot diameters are ground between centers, 1/2"-20 threaded arbor. For use with ATI413 and ATI474-(16 through 59) Hole Saws.



ATI415-1

ATI415-3 Hole Saw Arbor.

1/2" Ground Shank, 3/8" Pilot Shank with 1/2"-20 Threads to assure absolute concentricity. For use with AT413 and AT474 Hole Saws.

ATI415-10 Hole Saw Arbor.

1/4" shank and 1/4" pilot diameters are ground between centers, 1/2"-20 threaded arbor. For use with ATI413 and ATI474-(16 through 59) Hole Saws.

Duplicating Punches

Tight Tolerance Hole Duplication.

ATI507-1 Duplicating Punch - 3/32".

3 1/2" overall length. Manufactured from heat treated oil hardened drill rod (OHDR). NSN #5120-01-429-3929

ATI507-2 Duplicating Punch - #40.

3 1/2" overall length. Manufactured from heat treated oil hardened drill rod (OHDR). NSN #5120-01-429-3896

ATI507-3 Duplicating Punch - 1/8".

3 1/2" overall length. Manufactured from heat treated oil hardened drill rod (OHDR). NSN #5120-01-429-3911

ATI507-4 Duplicating Punch - #30.

3 1/2" overall length. Manufactured from heat treated oil hardened drill rod (OHDR). NSN #5120-01-429-3923

ATI507-10 Duplicating Punch - 1/4".

3 1/2" overall length. Manufactured from heat treated oil hardened drill rod (OHDR). NSN #5120-01-429-3894

ATI507-11 Duplicating Punch - 5/16".

3 1/2" overall length. Manufactured from heat treated oil hardened drill rod (OHDR). NSN #5120-01-429-3900



ATI507KT



ATI507KT Duplicating Punch Kit.

Kit includes fourteen punch sizes, 3/32", #40, 1/8", #30, 5/32", #19, 3/16", #10, 7/32", 1/4", 5/16", 3/8", 7/16", 1/2", accurately center punches hole location from one sheet to another.



WARNING

- Airframe tooling can cause flying chips.
- Wear safety goggles (user and bystanders).



Strap Duplicators

**ATI500-52 Strap Duplicator - Punch Type
- #30 Pilot.**

6 1/4" working length, made from high grade spring steel. Center punches sheet from hidden pilot hole. NSN #5130-01-368-5851

**ATI500-53 Strap Duplicator - Punch Type
- #21 Pilot.**

6 1/4" working length, made from high grade spring steel. Center punches sheet from hidden pilot hole. NSN #5130-01-368-5852

**ATI50055 Strap Duplicator - Punch Type
- #10 Pilot.**

6 1/4" working length, made from high grade spring steel. Center punches sheet from hidden pilot hole. NSN #5130-01-368-5853

**ATI532-61 Strap Duplicator - Bushing
Type - #40 Pilot/#40 Bushing.**

6 1/4" working length, made from high grade spring steel. Bushing type for drilling duplicate holes in overlapping sheets. NSN #5130-01-368-5854

**ATI532-62 Strap Duplicator - Bushing
Type - #30 Pilot/#30 Bushing.**

6 1/4" working length, made from high grade spring steel. Bushing type for drilling duplicate holes in overlapping sheets. NSN #5130-01-368-5855

**ATI532-63 Strap Duplicator - Bushing
Type - #21 Pilot/#21 Bushing.**

6 1/4" working length, made from high grade spring steel. Bushing type for drilling duplicate holes in overlapping sheets. NSN #5130-01-368-5831

**ATI532-65 Strap Duplicator - Bushing
Type - #10 Pilot/#10 Bushing.**

6 1/4" working length, made from high grade spring steel. Bushing type for drilling duplicate holes in overlapping sheets. NSN #5130-01-368-5832

**ATI532-68 Strap Duplicator - Bushing
Type - 1/4in Pilot/1/4in Bushing.**

6 1/4" working length, made from high grade spring steel. Bushing type for drilling duplicate holes in overlapping sheets. NSN #3465-01-050-7676

**ATI532A-61 Strap Duplicator - Inverted Pilot
Bushing Type - #40 Pilot/#40 Bushing.**

6 1/4" working length, made from high grade spring steel. Similar as bushing type but has an inverted pilot. NSN #5130-01-368-5839

**ATI532A-62 Strap Duplicator - Inverted Pilot
Bushing Type - #30 Pilot/#30 Bushing.**

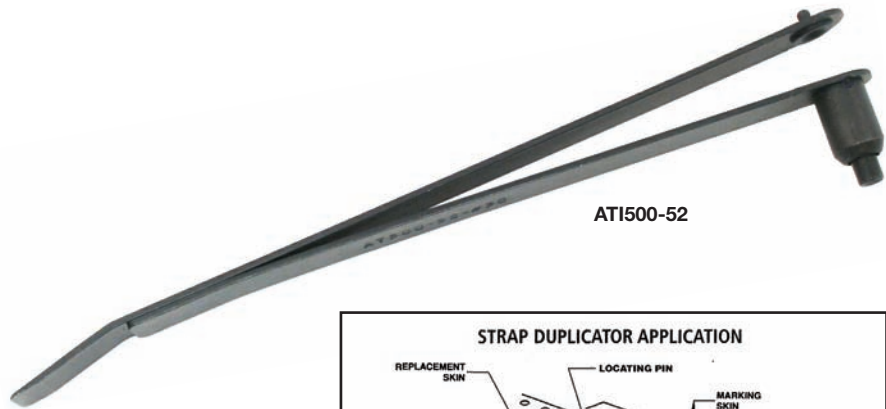
6 1/4" working length, made from high grade spring steel. Similar as bushing type but has an inverted pilot. NSN #5130-01-368-5840

**ATI532A-63 Strap Duplicator - Inverted Pilot
Bushing Type - #21 Pilot/#21 Bushing.**

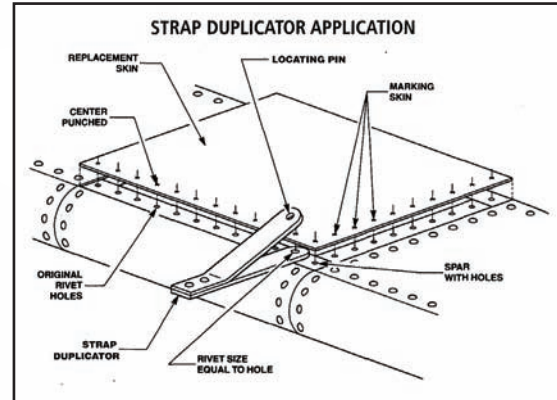
6 1/4" working length, made from high grade spring steel. Similar as bushing type but has an inverted pilot. NSN #5130-01-368-5841

**ATI532A-65 Strap Duplicator - Inverted Pilot
Bushing Type - #10 Pilot/#10 Bushing.**

6 1/4" working length, made from high grade spring steel. Similar as bushing type but has an inverted pilot. NSN #5130-01-368-5842



ATI500-52



ATI532-61



ATI532A-61

**AT1532C-61 Strap Duplicator - Bushing
Type - #40 Pilot/#40 Bushing.**
13 1/4" working length, made from high grade spring steel. Bushing type for drilling duplicate holes in overlapping sheets. NSN #5130-01-368-5834

**AT1532C-62 Strap Duplicator - Bushing
Type - #30 Pilot/#30 Bushing.**
13 1/4" working length, made from high grade spring steel. Bushing type for drilling duplicate holes in overlapping sheets. NSN #5130-01-368-5835

**AT1532C-63 Strap Duplicator - Bushing
Type - #21 Pilot/#21 Bushing.**
13 1/4" working length, made from high grade spring steel. Bushing type for drilling duplicate holes in overlapping sheets. NSN #5130-01-368-5836

**AT1532C-65 Strap Duplicator - Bushing
Type - #10 Pilot/#10 Bushing.**
13 1/4" working length, made from high grade spring steel. Bushing type for drilling duplicate holes in overlapping sheets. NSN #5130-01-368-5837

AT1532C-68



**AT1532C-68 Strap Duplicator - Bushing
Type - 1/4in Pilot/1/4in Bushing.**
13 1/4" working length, made from high grade spring steel. Bushing type for drilling duplicate holes in overlapping sheets. NSN #5130-01-368-5838



AT1532D-61

**AT1532D-61 Strap Duplicator - Inverted Pilot
Bushing Type - #40 Pilot/#40 Bushing.**
13 1/4" working length, made from high grade spring steel. Similar as bushing type but has an inverted pilot. NSN #5130-01-369-2146

**AT1532D-62 Strap Duplicator - Inverted Pilot
Bushing Type - #30 Pilot/#30 Bushing.**
13 1/4" working length, made from high grade spring steel. Similar as bushing type but has an inverted pilot. NSN #5130-01-368-5844

Chip Chasers

AT1512 Chip Chaser - 5 7/8in.
Designed to remove chips between sheets after holes have been drilled for riveting. Spring steel with molded handle.



AT1512

ATISP200 Chip Chaser - Aluminum Handle.
Aluminum handle only, uses optional ATISP20002, ATISP20003, ATISP20004, ATISP20005 chip chaser blades sold separately.

ATISP200-1 Chip Chaser Tool-Pointed Hook - 5 7/8in.
Consist of ATISP200 aluminum handle and ATISP20002 pointed hook blade.

ATISP200-2 Chip Chaser Tool-Blunt Hook - 5 7/8in.
Consist of ATISP200 aluminum handle and ATISP20003 blunt hook blade.

ATISP200-3 Chip Chaser Tool-Pointed Hook - 2 3/4in.
Consist of ATISP200 aluminum handle and ATISP20004 pointed hook blade.

ATISP20002 Pointed Hook Chip Chaser Blade - 5 7/8in.
Replacement blade, used with ATISP200 aluminum handle.

ATISP20004 Pointed Hook Chip Chaser Blade - 2 3/4in.
Replacement blade, used with ATISP200 aluminum handle.



ATISP200



The ATISP Series is Boeing Approved.

ATISP200-1

ATISP200-2

ATISP200-3



WARNING

- Airframe tooling can cause flying chips.
- Wear safety goggles (user and bystanders).



Kits

ATI590CSK

ATI590CSK Microstop/Countersink Cutter Kit.
 Kit includes nine 1/2" diameter 100-degree countersink cutters, with integral pilots of #40, #30, #21, #10, 3/32", 1/8", 5/32", 3/16" and 1/4", six foot pieces, and a .001" adjustable microstop with 5/16" travel.
 NSN #5133-01-428-5693

Countersinking Versatility in a Convenient and Portable Kit.



ATI590SMKSP1 Sheet Metal Mechanics Kit.

Starter kit includes:

- 3X Rivet Gun, Sioux Brand
- 1/4" 2600 RPM Drill, Sioux Brand
- 3-1/2" Cupped Rivet Sets – 1/8", 3/16", 3/32", 5/32"
- 3-1/2" Flush Rivet Set – 1-1/4"
- Integral Pilot Countersink Cutters - #10, #20, #30, #40
- Micro-Stop
- Hand Rivet Cutter
- Sheet Holder Pliers
- Spring Tension Clamps
- Sheet Holders 12ea. 3/32", 1/8", 5/32", 3/16"
- Drill Stops – 1ea. #10, #20, #30, #40
- Bucking Bar8
- Drill Bits – 1ea. #10, #21, #30, #40, 1/8", 3/16", 3/32", 5/32"
- Retainer Spring-Quick Change

ATI590SMKSP1



Microstops

High Speed Thrust Ball Bearing for Longevity.

ATI432B Microstop - 3/8" - 24 Threaded Jumbo - .001" Adjustment.

Accepts up to 1 1/4" countersink cutter diameter using 3/8"-24 male threaded shank, solid one piece shaft utilizes oilite bearings, and a thrust ball bearing for longevity.



ATI432B

ATI441HSA Microstop - .001" Adjustment - Phenolic Tipped Skirt.

Accepts up to 9/16" countersink cutter diameter using 1/4"-28 male threaded shank, utilizes needle bearings, 5/16" shaft travel, left handed hex locknut, 1/4" shaft, and a thrust ball bearing for longevity.

ATI441HSBF Microstop - .001" Adjustment - Flanged Skirt.

Accepts up to 5/8" countersink cutter diameter using 1/4"-28 male threaded shank, utilizes ball bearings, 5/16" shaft travel, left handed hex locknut, 1/4" shaft with chucking flats, flanged skirt for increased stability, and a thrust ball bearing for longevity. NSN #5120-01-344-2736

ATI441HSBS Microstop - .001" Adjustment - Straight Skirt.

Accepts up to 5/8" countersink cutter diameter using 1/4"-28 male threaded shank, utilizes ball bearings, 5/16" shaft travel, left handed hex locknut, 1/4" shaft with chucking flats, straight skirt, and a thrust ball bearing for longevity.

ATI441HSF Microstop - .001" Adjustment - Flanged Skirt.

Accepts up to 5/8" countersink cutter diameter using 1/4"-28 male threaded shank, utilizes needle bearings, 5/16" shaft travel, left handed hex locknut, 1/4" shaft, flanged skirt for increased stability, and a thrust ball bearing for longevity.

ATI441HSS Microstop - .001" Adjustment - Straight Skirt.

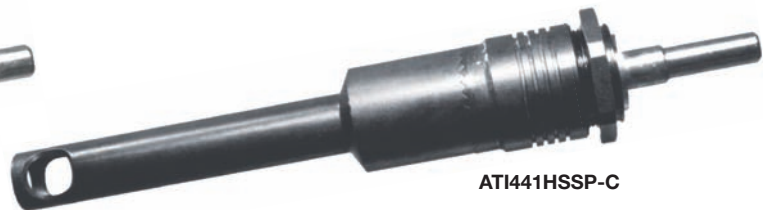
Accepts up to 5/8" countersink cutter diameter using 1/4"-28 male threaded shank, utilizes needle bearings, 5/16" shaft travel, left handed hex locknut, 1/4" shaft, straight skirt, and a thrust ball bearing for longevity. NSN #5130-01-371-0080

ATI441HSSP-C Microstop - .001" Adjustment - Extended Nose.

Accepts up to 3/8" countersink cutter diameter using 1/4"-28 male threaded shank, utilizes needle bearings, 5/16" shaft travel, left handed hex locknut, 1/4" shaft, 1/2" diameter nose, 2 3/4" extended straight skirt, and a thrust ball bearing for longevity.



ATI441HSS



ATI441HSSP-C

ATI442HSS Microstop - .001" Adjustment Straight Skirt.

Accepts up to 5/8" countersink cutter diameter using 1/4"-28 female threaded end, utilizes needle bearings, 5/16" shaft travel, left handed hex locknut, 1/4" shaft, straight skirt, and a thrust ball bearing for longevity. Recommend ATI418 family of female threaded countersink cutters and ATI416 family of countersink pilots.



ATI442HSS

ATI462 Microstop - 3/8" - 24 Threaded Jumbo - .003in Adjustment.

Accepts up to 7/8" countersink cutter diameter using 3/8"-24 male threaded shank, solid one piece shaft utilizes oilite bearings, and a thrust ball bearing for longevity. NSN #3460-00-847-5135

ATI462H3-1.3 Microstop - 3/8" - 24 Threaded Jumbo - .0005in Adjustment.

Accepts up to 1 1/4" countersink cutter diameter using 3/8"-24 male threaded shank, solid one piece shaft utilizes ball radial bearings and thrust bearings for operating to 5000 RPM. Unique shaft features chucking flats and 3/4" travel.

ATI462H7-1.3 Microstop - 7/16" - 20 Jumbo - .0005in

Adjustment. Accepts up to 1 1/4" countersink cutter diameter using 7/16"-20 male threaded shank, solid one piece shaft utilizes ball radial bearings and thrust bearings for operating to 5000 RPM. Unique shaft features chucking flats and 3/4" travel.

Nylon Inserts

ATI440A-13 Nylon Insert - Microstop.

Replacement insert for Microstop with interchangeable insert foot piece. Used with ATI440A1X Skirt.



ATI440A-13



WARNING

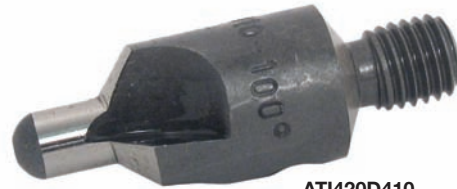
- Airframe tooling can cause flying chips.
- Wear safety goggles (user and bystanders).



Countersinks

Ground On-Center to Ensure Concentricity and Eliminates Run-Out.

Manufactured from M2 High Speed Steel.



ATI420D410

ATI420D410 Countersink - Integral Pilot - Three Flute.

7/16" body diameter, #10 integrated pilot, 3 flute, 100-degree cutting angle with 1/4"-28 threaded male shank. Used with ATI441HS-product family of Microstop or any 1/4"-28 threaded Microstop. NSN #5133-01-397-3020

ATI420D421 Countersink - Integral Pilot - Three Flute.

7/16" body diameter, #21 integrated pilot, 3 flute, 100-degree cutting angle with 1/4"-28 threaded male shank. Used with ATI441HS-product family of Microstop or any 1/4"-28 threaded Microstop. NSN #5133-01-397-3080

ATI420D430 Countersink - Integral Pilot - Three Flute.

7/16" body diameter, #30 integrated pilot, 3 flute, 100-degree cutting angle with 1/4"-28 threaded male shank. Used with ATI441HS-product family of Microstop or any 1/4"-28 threaded Microstop. NSN #5133-01-397-3081

ATI420D440 Countersink - Integral Pilot - Three Flute.

7/16" body diameter, #40 integrated pilot, 3 flute, 100-degree cutting angle with 1/4"-28 threaded male shank. Used with ATI441HS-product family of Microstop or any 1/4"-28 threaded Microstop. NSN #5133-01-397-3086

ATI420D41/4 Countersink - Integral Pilot - Three Flute.

7/16" body diameter, 1/4" integrated pilot, 3 flute, 100-degree cutting angle with 1/4"-28 threaded male shank. Used with ATI441HS-product family of Microstop or any 1/4"-28 threaded Microstop. NSN #5133-01-397-3087

ATI420D41/8 Countersink - Integral Pilot - Three Flute.

7/16" body diameter, 1/8" integrated pilot, 3 flute, 100-degree cutting angle with 1/4"-28 threaded male shank. Used with ATI441HS-product family of Microstop or any 1/4"-28 threaded Microstop. NSN #5133-01-397-3085

ATI420D43/16 Countersink - Integral Pilot - Three Flute.

7/16" body diameter, 3/16" integrated pilot, 3 flute, 100-degree cutting angle with 1/4"-28 threaded male shank. Used with ATI441HS-product family of Microstop or any 1/4"-28 threaded Microstop. NSN #5133-01-397-3090

ATI420D43/32 Countersink - Integral Pilot - Three Flute.

7/16" body diameter, 3/32" integrated pilot, 3 flute, 100-degree cutting angle with 1/4"-28 threaded male shank. Used with ATI441HS-product family of Microstop or any 1/4"-28 threaded Microstop. NSN #5133-01-397-3084

ATI420D45/32 Countersink - Integral Pilot - Three Flute.

7/16" body diameter, 5/32" integrated pilot, 3 flute, 100-degree cutting angle with 1/4"-28 threaded male shank. Used with ATI441HS-product family of Microstop or any 1/4"-28 threaded Microstop. NSN #5133-01-397-3089

ATI420D-4PC Countersink - Integral Pilot - Three Flute - Set.

Four piece set includes- 7/16" body diameter, 3-flute, 100-degree with integral pilots 3/32", 1/8", 5/32" and 3/16" in an Anodized Aluminum Threaded Holder. NSN #5133-01-428-5685



ATI420D-4PC

Integral Pilot

ATI445E410 Countersink - Integral Pilot - Two Flute.

1/2" body diameter, #10 integrated pilot, 2 flute, 100-degree cutting angle with 1/4"-28 threaded male shank. Used with ATI441HS-product family of Microstop or any 1/4"-28 threaded Microstop. NSN #5133-01-397-3091

ATI445E421 Countersink - Integral Pilot - Two Flute.

1/2" body diameter, #21 integrated pilot, 2 flute, 100-degree cutting angle with 1/4"-28 threaded male shank. Used with ATI441HS-product family of Microstop or any 1/4"-28 threaded Microstop. NSN #5133-01-397-3092

ATI445E430 Countersink - Integral Pilot - Two Flute.

1/2" body diameter, #30 integrated pilot, 2 flute, 100-degree cutting angle with 1/4"-28 threaded male shank. Used with ATI441HS-product family of Microstop or any 1/4"-28 threaded Microstop. NSN #5133-01-397-3081

ATI445E440 Countersink - Integral Pilot - Two Flute.

1/2" body diameter, #40 integrated pilot, 2 flute, 100-degree cutting angle with 1/4"-28 threaded male shank. Used with ATI441HS-product family of Microstop or any 1/4"-28 threaded Microstop. NSN #5133-01-397-3094

ATI445E41/4 Countersink - Integral Pilot - Two Flute.

1/2" body diameter, 1/4" integrated pilot, 2 flute, 100-degree cutting angle with 1/4"-28 threaded male shank. Used with ATI441HS-product family of Microstop or any 1/4"-28 threaded Microstop. NSN #5133-01-397-3228

ATI445E41/8 Countersink - Integral Pilot - Two Flute.

1/2" body diameter, 1/8" integrated pilot, 2 flute, 100-degree cutting angle with 1/4"-28 threaded male shank. Used with ATI441HS-product family of Microstop or any 1/4"-28 threaded Microstop. NSN #5133-01-397-3219

ATI445E43/16 Countersink - Integral Pilot - Two Flute.

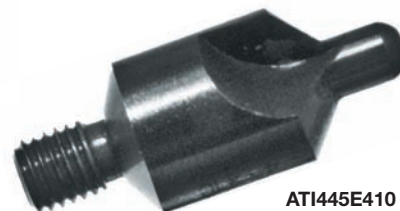
1/2" body diameter, 3/16" integrated pilot, 2 flute, 100-degree cutting angle with 1/4"-28 threaded male shank. Used with ATI441HS-product family of Microstop or any 1/4"-28 threaded Microstop. NSN #5133-01-397-3227

ATI445E43/32 Countersink - Integral Pilot - Two Flute.

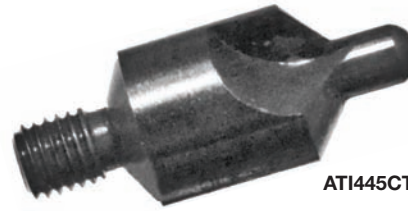
1/2" body diameter, 3/32" integrated pilot, 2 flute, 100-degree cutting angle with 1/4"-28 threaded male shank. Used with ATI441HS-product family of Microstop or any 1/4"-28 threaded Microstop. NSN #5133-01-397-2930

ATI445E45/32 Countersink - Integral Pilot - Two Flute.

1/2" body diameter, 5/32" integrated pilot, 2 flute, 100-degree cutting angle with 1/4"-28 threaded male shank. Used with ATI441HS-product family of Microstop or any 1/4"-28 threaded Microstop. NSN #5133-01-397-3226



ATI445E410



ATI445CTE410

Integral Pilot - Carbide Tip

ATI445CTE410 Countersink - Integral Pilot - Two Flute - Carbide Tipped.
1/2" body diameter, #10 integrated pilot, 2 flute, carbide tipped, 100-degree cutting angle with 1/4"-28 threaded male shank. Used with AT1441HS-product family of Microstops or any 1/4"-28 threaded Microstop. NSN #5133-01-397-3223

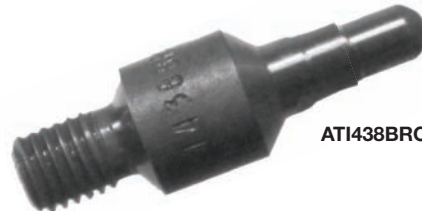
ATI445CTE440 Countersink - Integral Pilot - Two Flute - Carbide Tipped.
1/2" body diameter, #40 integrated pilot, 2 flute, carbide tipped, 100-degree cutting angle with 1/4"-28 threaded male shank. Used with AT1441HS-product family of Microstops or any 1/4"-28 threaded Microstop. NSN #5133-01-397-3232

ATI445CTE421 Countersink - Integral Pilot - Two Flute - Carbide Tipped.
1/2" body diameter, #21 integrated pilot, 2 flute, carbide tipped, 100-degree cutting angle with 1/4"-28 threaded male shank. Used with AT1441HS-product family of Microstops or any 1/4"-28 threaded Microstop. NSN #5133-01-397-3224

ATI445CTE414 Countersink - Integral Pilot - Two Flute - Carbide Tipped.
1/2" body diameter, 1/4" integrated pilot, 2 flute, carbide tipped, 100-degree cutting angle with 1/4"-28 threaded male shank. Used with AT1441HS-product family of Microstops or any 1/4"-28 threaded Microstop. NSN #5133-01-428-5682

ATI445CTE430 Countersink - Integral Pilot - Two Flute - Carbide Tipped.
1/2" body diameter, #30 integrated pilot, 2 flute, carbide tipped, 100-degree cutting angle with 1/4"-28 threaded male shank. Used with AT1441HS-product family of Microstops or any 1/4"-28 threaded Microstop. NSN #5133-01-397-3225

ATI445CTE418 Countersink - Integral Pilot - Two Flute - Carbide Tipped.
1/2" body diameter, 1/8" integrated pilot, 2 flute, carbide tipped, 100-degree cutting angle with 1/4"-28 threaded male shank. Used with AT1441HS-product family of Microstops or any 1/4"-28 threaded Microstop. NSN #5133-01-397-3229



ATI438BRC-5



ATI438BRC-8

Briles® Type

ATI438BRC3 Countersink - Briles® Type - 3/32" Rivet.
3/8" body diameter, .096 pilot diameter, .180 pilot length, 3/32" rivet size, 120-degree cutting angle, .1235 intermediate body diameter, .949 body and shank length, 1/4"-28 threaded male shank.

ATI438BRC-6 Countersink - Briles® Type - 3/16" Rivet.
3/8" body diameter, .191 pilot diameter, .250 pilot length, 3/16" rivet size, 120-degree cutting angle, .2585 intermediate body diameter, .958 body and shank length, 1/4"-28 threaded male shank.

ATI438BRC-4 Countersink - Briles® Type - 1/8" Rivet.
3/8" body diameter, .126 pilot diameter, .200 pilot length, 1/8" rivet size, 120-degree cutting angle, .1625 intermediate body diameter, .952 body and shank length, 1/4"-28 threaded male shank.

ATI438BRC-7 Countersink - Briles® Type - 7/32" Rivet.
3/8" body diameter, .226 pilot diameter, .280 pilot length, 7/32" rivet size, 120-degree cutting angle, .3125 intermediate body diameter, .962 body and shank length, 1/4"-28 threaded male shank.

ATI438BRC-5 Countersink - Briles® Type - 5/32" Rivet.
3/8" body diameter, .159 pilot diameter, .220 pilot length, 5/32" rivet size, 120-degree cutting angle, .2105 intermediate body diameter, .955 body and shank length, 1/4"-28 threaded male shank.

ATI438BRC-8 Countersink - Briles® Type - 1/4" Rivet.
1/2" body diameter, .255 pilot diameter, .280 pilot length, 1/4" rivet size, 120-degree cutting angle, .3585 intermediate body diameter, .966 body and shank length, 1/4"-28 threaded male shank.

Replaceable Pilot

ATI455CTE-4 Countersink - Replaceable Pilot - Two Flute - Carbide Tipped.
1/2" body diameter, .125" pilot hole, 2 flute, carbide tipped, 100-degree cutting angle with 1/4"-28 threaded male shank. Uses AT1485 family of pilots and AT1441HS-product family of Microstops or any 1/4"-28 threaded Microstop.

ATI455G-4 Countersink - Replaceable Pilot - Two Flute.
5/8" body diameter, .086" pilot hole, 2 flute, 100-degree cutting angle with 1/4"-28 threaded male shank. Uses AT1484 family of pilots and AT1441HS-product family of Microstops or any 1/4"-28 threaded Microstop.

ATI455H-4 Countersink - Replaceable Pilot - Three Flute.
3/4" body diameter, .170" pilot hole, 3 flute, 100-degree cutting angle with 3/8"-24 threaded male shank. Uses AT1435 family of pilots and AT1462HS-product family of Microstops or any 3/8"-24 threaded Microstop.

ATI455D-4 Countersink - Replaceable Pilot - Two Flute.
7/16" body diameter, .086" pilot hole, 2 flute, 100-degree cutting angle with 1/4"-28 threaded male shank. Uses AT1484 family of pilots and AT1441HS-product family of Microstops or any 1/4"-28 threaded Microstop.

ATI455SKE-4 Countersink - Kevlar/Composite - Replaceable Pilot - Two Flute.
1/2" body diameter, .086" pilot hole, 2 positive rake cutting flutes, 1/4"-28 threaded male shank for use on Kevlar® Composites, Fiberglass and Glass Epoxies. Uses AT1484-family of pilots.

ATI455J-4 Countersink - Replaceable Pilot - Three Flute.
7/8" body diameter, .170" pilot hole, 3 flute, 100-degree cutting angle with 3/8"-24 threaded male shank. Uses AT1435 family of pilots and AT1462HS-product family of Microstops or any 3/8"-24 threaded Microstop.



ATI455G-4

ATI455E-4 Countersink - Replaceable Pilot - Two Flute.
1/2" body diameter, .086" pilot hole, 2 flute, 100-degree cutting angle with 1/4"-28 threaded male shank. Uses AT1484 family of pilots and AT1441HS-product family of Microstops or any 1/4"-28 threaded Microstop.

ATI455C-4 Countersink - Replaceable Pilot - Two Flute.
3/8" body diameter, .086" pilot hole, 2 flute, 100-degree cutting angle with 1/4"-28 threaded male shank. Uses AT1484 family of pilots and AT1441HS-product family of Microstops or any 1/4"-28 threaded Microstop.



WARNING

- Airframe tooling can cause flying chips.
- Wear safety goggles (user and bystanders).



Pilots

ATI416-57 Pilot.

.086" shank diameter, 1/8" pilot diameter. Ground head diameter held to .0005" tolerance. Designed to fit ATI418 cutter and ATI421 spotfacer. NSN #3460-01-355-6198

ATI416-61 Pilot.

.086" shank diameter, 3/16" pilot diameter. Ground head diameter held to .0005" tolerance. Designed to fit ATI418 cutter and ATI421 spotfacer. NSN #3460-01-355-6205

ATI435-3/8 Pilot - Countersink - 3/8".

.170 shank diameter with flat for set screw, 3/8" pilot diameter, undercut to maintain concentricity and prevent breakage. Use with ATI435H and ATI455H and family of countersink cutters 3/4" and larger body diameter.

ATI416-59 Pilot.

.086" shank diameter, 5/32" pilot diameter. Ground head diameter held to .0005" tolerance. Designed to fit ATI418 cutter and ATI421 spotfacer. NSN #3460-01-355-6195

ATI416-65 Pilot.

.086" shank diameter, 1/4" pilot diameter. Ground head diameter held to .0005" tolerance. Designed to fit ATI418 cutter and ATI421 spotfacer. NSN #3460-01-355-6197

ATI435-5/16 Pilot - Countersink - 5/16".

.170 shank diameter with flat for set screw, 5/16" pilot diameter, undercut to maintain concentricity and prevent breakage. Use with ATI435H and ATI455H and family of countersink cutters 3/4" and larger body diameter. NSN #3460-00-350-1445



ATI416-65



ATI435-3/8

ATI484-2



ATI484-57



ATI484-2 Pilot - Countersink - .086" Shank.

#40 diameter. Use with ATI455 family of replaceable piloted countersink cutters.

ATI484-12 Pilot - Countersink - .086" Shank.

#30 diameter. Use with ATI455 family of replaceable piloted countersink cutters.

ATI484-21 Pilot - Countersink - .086" Shank.

#21 diameter. Use with ATI455 family of replaceable piloted countersink cutters.

ATI484-56 Pilot - Countersink - .086" Shank.

3/32" diameter. Use with ATI455 family of replaceable piloted countersink cutters. NSN #3460-01-292-4754

ATI484-57 Pilot - Countersink - .086" Shank.

1/8" diameter. Use with ATI455 family of replaceable piloted countersink cutters. NSN #3460-01-292-4755

ATI484-59 Pilot - Countersink - .086" Shank.

5/32" diameter. Use with ATI455 family of replaceable piloted countersink cutters. NSN #3460-01-292-4756

ATI484-61 Pilot - Countersink - .086" Shank.

3/16" diameter. Use with ATI455 family of replaceable piloted countersink cutters. NSN #3460-01-292-4757

ATI484-63 Pilot - Countersink - .086" Shank.

7/32" diameter. Use with ATI455 family of replaceable piloted countersink cutters.

ATI484-65 Pilot - Countersink - .086" Shank.

1/4" diameter. Use with ATI455 family of replaceable piloted countersink cutters. NSN #3460-01-292-4758

Extensions

ATI470A-1 Extension-Counterbore.

1/4" shank diameter, 2 set screws to secure counterbore shaft, 4" overall length.

ATI470B1 Extension - Countersink.

1/4" shank diameter, 1/4"-28 female thread with 120-degree seating angle, 4" Overall Length.



ATI470A-1

ATI470B1



AT1488C-21

AT1488C-1 Counterbore - Aircraft Type - 1/4" Cutting Diameter.
4-flute, 2 3/8" length, 1/4" shank diameter, 3/32" pilot hole, uses AT1489A family of pilots.

AT1488C-6 Counterbore - Aircraft Type - 13/32" Cutting Diameter.
4-flute, 2 13/16" length, 1/4" shank diameter, 1/8" pilot hole, uses AT1489B family of pilots.

AT1488C-9 Counterbore - Aircraft Type - 1/2" Cutting Diameter.
4-flute, 2 13/16" length, 1/4" shank diameter, 1/8" pilot hole, uses AT1489B family of pilots.

AT1488C-12 Counterbore - Aircraft Type - 19/32" Cutting Diameter.
4-flute, 2 13/16" length, 1/4" shank diameter, 1/8" pilot hole, uses AT1489B family of pilots.

AT1488C-17 Counterbore - Aircraft Type - 3/4" Cutting Diameter.
4-flute, 2 13/16" length, 1/4" shank diameter, 3/16" pilot hole, uses AT1489C family of pilots.

AT1488C-25 Counterbore - Aircraft Type - 1" Cutting Diameter.
4-flute, 2 13/16" length, 1/4" shank diameter, 3/16" pilot hole, uses AT1489C family of pilots.

AT1488C-32 Counterbore - Aircraft Type - 1 1/2" Cutting Diameter.
4-flute, 2 13/16" length, 3/8" shank diameter, 3/16" pilot hole, uses AT1489C family of pilots.



AT1488C-25

AT1488C-3 Counterbore - Aircraft Type - 5/16" Cutting Diameter.
4-flute, 2 3/8" length, 1/4" shank diameter, 3/32" pilot hole, uses AT1489A family of pilots.

AT1488C-7 Counterbore - Aircraft Type - 7/16" Cutting Diameter.
4-flute, 2 13/16" length, 1/4" shank diameter, 1/8" pilot hole, uses AT1489B family of pilots.

AT1488C-10 Counterbore - Aircraft Type - 17/32" Cutting Diameter.
4-flute, 2 13/16" length, 1/4" shank diameter, 1/8" pilot hole, uses AT1489B family of pilots.

AT1488C-13 Counterbore - Aircraft Type - 5/8" Cutting Diameter.
4-flute, 2 13/16" length, 1/4" shank diameter, 1/8" pilot hole, uses AT1489B family of pilots.

AT1488C-19 Counterbore - Aircraft Type - 13/16" Cutting Diameter.
4-flute, 2 13/16" length, 1/4" shank diameter, 3/16" pilot hole, uses AT1489C family of pilots.

AT1488C-29 Counterbore - Aircraft Type - 1 1/4" Cutting Diameter.
4-flute, 2 13/16" length, 3/8" shank diameter, 3/16" pilot hole, uses AT1489C family of pilots.

AT1488C-5 Counterbore - Aircraft Type - 3/8" Cutting Diameter.
4-flute, 2 3/8" length, 1/4" shank diameter, 3/32" pilot hole, uses AT1489A family of pilots.

AT1488C-8 Counterbore - Aircraft Type - 15/32" Cutting Diameter.
4-flute, 2 13/16" length, 1/4" shank diameter, 1/8" pilot hole, uses AT1489B family of pilots.

AT1488C-11 Counterbore - Aircraft Type - 9/16" Cutting Diameter.
4-flute, 2 13/16" length, 1/4" shank diameter, 1/8" pilot hole, uses AT1489B family of pilots.

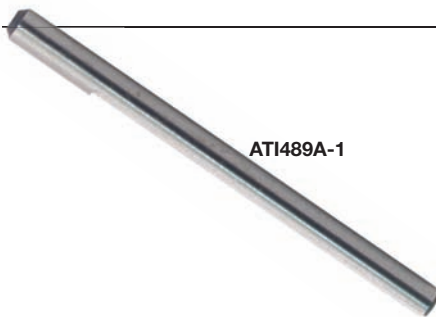
AT1488C-15 Counterbore - Aircraft Type - 11/16" Cutting Diameter.
4-flute, 2 13/16" length, 1/4" shank diameter, 3/16" pilot hole, uses AT1489C family of pilots.

AT1488C-21 Counterbore - Aircraft Type - 7/8" Cutting Diameter.
4-flute, 2 13/16" length, 1/4" shank diameter, 3/16" pilot hole, uses AT1489C family of pilots.

AT1488C-31 Counterbore - Aircraft Type - 1 3/8" Cutting Diameter.
4-flute, 2 13/16" length, 3/8" shank diameter, 3/16" pilot hole, uses AT1489C family of pilots.

Counterbores

Heat-Treated M2 High Speed Steel



AT1489A-1

AT1489A-1 Pilot - Counterbore, 3/32" Shank Diameter, 3/32" Pilot Diameter.
Flat surface for set screw security, use with AT1488C-1 through AT1488C-5 counterbores.
NSN #3460-01-513-0144

AT1489A-5 Pilot - Counterbore, 3/32" Shank Diameter, 3/16" Pilot Diameter.
Flat surface for set screw security, use with AT1488C-1 through AT1488C-5 counterbores.
NSN #3460-00-932-3313

AT1489A-3 Pilot - Counterbore, 3/32" Shank Diameter, 5/32" Pilot Diameter.
Flat surface for set screw security, use with AT1488C-1 through AT1488C-5 counterbores.

AT1489A-8 Pilot - Counterbore, 3/32" Shank Diameter, 1/4" Pilot Diameter.
Flat surface for set screw security, use with AT1488C-1 through AT1488C-5 counterbores.
NSN #3460-00-932-3316

AT1489B-8



AT1489B-2 Pilot - Counterbore, 1/8" Shank Diameter, 1/8" Pilot Diameter.
Flat surface for set screw security, use with AT1488C-6 through AT1488C-13 counterbores.

AT1489B-6 Pilot - Counterbore, 1/8" Shank Diameter, #10 Pilot Diameter.
Flat surface for set screw security, use with AT1488C-6 through AT1488C-13 counterbores.

AT1489B-11 Pilot - Counterbore, 1/8" Shank Diameter, 5/16" Pilot Diameter.
Flat surface for set screw security, use with AT1488C-6 through AT1488C-13 counterbores.

AT1489B-3 Pilot - Counterbore, 1/8" Shank Diameter, 5/32" Pilot Diameter.
Flat surface for set screw security, use with AT1488C-6 through AT1488C-13 counterbores.

AT1489B-8 Pilot - Counterbore, 1/8" Shank Diameter, 1/4" Pilot Diameter.
Flat surface for set screw security, use with AT1488C-6 through AT1488C-13 counterbores.

AT1489B-13 Pilot - Counterbore, 1/8" Shank Diameter, 3/8" Pilot Diameter.
Flat surface for set screw security, use with AT1488C-6 through AT1488C-13 counterbores.

AT1489B-5 Pilot - Counterbore, 1/8" Shank Diameter, 3/16" Pilot Diameter.
Flat surface for set screw security, use with AT1488C-6 through AT1488C-13 counterbores.

AT1489B-10 Pilot - Counterbore, 1/8" Shank Diameter, 9/32" Pilot Diameter.
Flat surface for set screw security, use with AT1488C-6 through AT1488C-13 counterbores.

AT1489B-14 Pilot - Counterbore, 1/8" Shank Diameter, 13/32" Pilot Diameter.
Flat surface for set screw security, use with AT1488C-6 through AT1488C-13 counterbores.

Counterbore Pilots



WARNING

- Airframe tooling can cause flying chips.
- Wear safety goggles (user and bystanders).



Counterbore Pilots



ATI489C-5

ATI489C-5 Pilot - Counterbore, 3/16" Shank Diameter, 3/16" Pilot Diameter.
Flat surface for set screw security, use with ATI488C-14 through ATI488C-32 counterbores.

ATI489C-13 Pilot - Counterbore, 3/16" Shank Diameter, 3/8" Pilot Diameter.
Flat surface for set screw security, use with ATI488C-14 through ATI488C-32 counterbores.

ATI489C-8 Pilot - Counterbore, 3/16" Shank Diameter, 1/4in Pilot Diameter.
Flat surface for set screw security, use with ATI488C-14 through ATI488C-32 counterbores.

ATI489C-15 Pilot - Counterbore, 3/16" Shank Diameter, 7/16" Pilot Diameter.
Flat surface for set screw security, use with ATI488C-14 through ATI488C-32 counterbores.

ATI489C-11 Pilot - Counterbore, 3/16" Shank Diameter, 5/16in Pilot Diameter.
Flat surface for set screw security, use with ATI488C-14 through ATI488C-32 counterbores.

ATI489C-17 Pilot - Counterbore, 3/16" Shank Diameter, 1/2in Pilot Diameter.
Flat surface for set screw security, use with ATI488C-14 through ATI488C-32 counterbores.

Kits

ATI590S Back Spot Facer Cutter Kit - 16 Pieces.

Kit includes 8 back spot facers and 8 pilots respectfully;

- 1/4" diameter with 3/32" pilot
- 5/16" diameter with 1/8" pilot
- 3/8" diameter with 5/32" pilot
- 1/2" diameter with 3/16" pilot
- 5/8" diameter with 1/4" pilot
- 3/4" diameter with 5/16" pilot
- 1" diameter with 3/8" pilot
- 1 1/4" diameter with 1/2" pilot

NSN #5133-01-014-5669

ATI590TA Back Countersink Cutter Kit - 16 Pieces.

Kit includes 8, 100-degree countersinks and 8 pilots respectfully;

- 1/4" diameter with 3/32" pilot
- 5/16" diameter with 1/8" pilot
- 3/8" diameter with 5/32" pilot
- 1/2" diameter with 3/16" pilot
- 3/4" diameter with 1/4" pilot
- 7/8" diameter with 5/16" pilot,
- 1" diameter with 3/8" pilot
- 1 1/4" diameter with 1/2" pilot.

NSN #5133-01-428-5695



ATI590S

Back Spotfacers

ATI403A Back Spotfacer - 1/4" OD.

1/4" Body Diameter, 3/32" Pilot Hole, 4 Flute, 100° Cutting Angle, .03 Corner Radius for reverse spotfacing and counterboring in confined areas. Use ATI404-1 Pilot. NSN #5133-01-392-8987

ATI403D Back Spotfacer - 5/16" OD.

5/16" Body Diameter, 5/32" Pilot Hole, 4 Flute, 100° Cutting Angle, .03 Corner Radius for reverse spotfacing and counterboring in confined areas. Use ATI404-3 Pilot.

ATI403G Back Spotfacer - 7/16" OD.

7/16" Body Diameter, 3/16" Pilot Hole, 4 Flute, 100° Cutting Angle, .03 Corner Radius for reverse spotfacing and counterboring in confined areas. Use ATI404-4 Pilot. NSN #5133-01-392-8989

ATI403K Back Spotfacer - 9/16" OD.

9/16" Body Diameter, 3/16" Pilot Hole, 4 Flute, 100° Cutting Angle, .03 Corner Radius for reverse spotfacing and counterboring in confined areas. Use ATI404-4 Pilot.

ATI403Q Back Spotfacer - 3/4" OD.

3/4" Body Diameter, 1/4" Pilot Hole, 4 Flute, 100° Cutting Angle, .03 Corner Radius for reverse spotfacing and counterboring in confined areas. Use ATI404-5 Pilot.

ATI403R Back Spotfacer - 3/4" OD.

3/4" Body Diameter, 5/16" Pilot Hole, 4 Flute, 100° Cutting Angle, .03 Corner Radius for reverse spotfacing and counterboring in confined areas. Use ATI404-6 Pilot.

ATI403X Back Spotfacer- 1 1/4" OD.

1-1/4" Body Diameter, 1/2" Pilot Hole, 4 Flute, 100° Cutting Angle, .03 Corner Radius for reverse spotfacing and counterboring in confined areas. Use ATI404-8 Pilot.

ATI403C Back Spotfacer - 5/16" OD.

5/16" Body Diameter, 1/8" Pilot Hole, 4 Flute, 100° Cutting Angle, .03 Corner Radius for reverse spotfacing and counterboring in confined areas. Use ATI404-2 Pilot. NSN #5133-01-392-8984

ATI403F Back Spotfacer - 3/8" OD.

3/8" Body Diameter, 5/32" Pilot Hole, 4 Flute, 100° Cutting Angle, .03 Corner Radius for reverse spotfacing and counterboring in confined areas. Use ATI404-3 Pilot. NSN #5133-01-392-8985

ATI403I Back Spotfacer - 1/2" OD.

1/2" Body Diameter, 3/16" Pilot Hole, 4 Flute, 100° Cutting Angle, .03 Corner Radius for reverse spotfacing and counterboring in confined areas. Use ATI404-4 Pilot.

ATI403M Back Spotfacer - 5/8" OD.

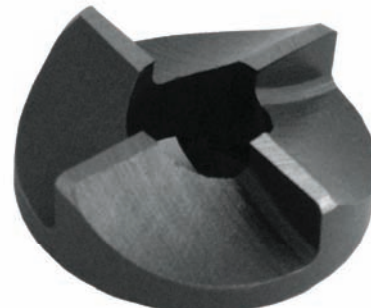
5/8" Body Diameter, 1/4" Pilot Hole, 4 Flute, 100° Cutting Angle, .03 Corner Radius for reverse spotfacing and counterboring in confined areas. Use ATI404-5 Pilot.



ATI403F



ATI403R



ATI403X

Back Countersinks



AT1402I-4

AT1402B-4 Back Countersink - 1/4" OD.

1/4" Body Diameter, 3/32" Pilot Hole, 4 Flute, 100° Cutting Angle for use in restricted areas when direct countersinking is not possible. Use AT1404-1 Pilot. NSN #5133-01-428-5631

AT1402F-4 Back Countersink - 3/8" OD.

3/8" Body Diameter, 5/32" Pilot Hole, 4 Flute, 100° Cutting Angle for use in restricted areas when direct countersinking is not possible. Use AT1404-3 Pilot. NSN #5133-01-428-5638

AT1402M-4 Back Countersink - 5/8" OD.

5/8" Body Diameter, 1/4" Pilot Hole, 4 Flute, 100° Cutting Angle for use in restricted areas when direct countersinking is not possible. Use AT1404-5 Pilot. NSN #5133-01-428-5656



AT1402M-4

AT1402C-4 Back Countersink - 5/16" OD.

5/16" Body Diameter, 1/8" Pilot Hole, 4 Flute, 100° Cutting Angle for use in restricted areas when direct countersinking is not possible. Use AT1404-2 Pilot. NSN #5133-01-057-0979

AT1402I-4 Back Countersink - 1/2" OD.

1/2" Body Diameter, 3/16" Pilot Hole, 4 Flute, 100° Cutting Angle for use in restricted areas when direct countersinking is not possible. Use AT1404-4 Pilot. NSN #5133-01-428-5610

Pilots

AT1404-1 3/32" Back Spotfacer Pilot.

3/32" diameter, 6" overall length, positive lock.
AKA: Bayonet Lock. NSN #5133-01-429-5868

AT1404-3 5/32" Back Spotfacer Pilot.

5/32" diameter, 6" overall length, positive lock.
AKA: Bayonet Lock. NSN #3460-00-902-1370

AT1404-5 1/4" Back Spotfacer Pilot.

1/4" diameter, 6" overall length, positive lock.
AKA: Bayonet Lock. NSN #3460-00-902-1391

AT1404-8 1/2" Back Spotfacer Pilot.

1/2" diameter, 6" overall length, positive lock.
AKA: Bayonet Lock. NSN #5133-01-429-5867

AT1404-2 1/8" Back Spotfacer Pilot.

1/8" diameter, 6" overall length, positive lock.
AKA: Bayonet Lock. NSN #3460-00-902-1363

AT1404-4 3/16" Back Spotfacer Pilot.

3/16" diameter, 6" overall length, positive lock.
AKA: Bayonet Lock. NSN #3460-00-902-1374

AT1404-6 5/16" Back Spotfacer Pilot.

5/16" diameter, 6" overall length, positive lock.
AKA: Bayonet Lock. NSN #5133-01-429-5866



AT1404-4

AT1404-5

AT1404-6

AT1404-8



WARNING

- Airframe tooling can cause flying chips.
- Wear safety goggles (user and bystanders).



Dimple Die Kit



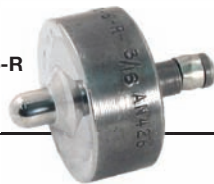
ATI206A-24PC

Tool Control Kit.

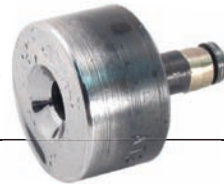
Kit Contains Three Body Lengths for Each Rivet Size.

ATI206A-24PC Dimple Die Kit-Cold
Kit includes 12 each male and female 3/16" shank, dimple-die combinations, for rivet sizes 3/32", 1/8", 5/32" and 3/16". Three different body lengths (1/4", 3/8" and 1/2") are provided for each rivet size.
NSN #5110-01-428-5694

ATI206A-6-R



ATI207A-5-R



Dimple Dies

ATI206A-3-P Male Dimple Die - Cold.
3/16" Shank Diameter, .56 Body Diameter, 1/4" Body Length for installing 3/32" AN426 Rivets.
NSN #5110-01-429-3685

ATI206A-4-P Male Dimple Die - Cold.
3/16" Shank Diameter, .62 Body Diameter, 1/4" Body Length for installing 1/8" AN426 Rivets.
NSN #5110-01-429-3686

ATI206A-5-P Male Dimple Die - Cold.
3/16" Shank Diameter, .68 Body Diameter, 1/4" Body Length for installing 5/32" AN426 Rivets.
NSN #5110-01-429-3692

ATI206A-6-P Male Dimple Die - Cold.
3/16" Shank Diameter, .87 Body Diameter, 1/4" Body Length for installing 3/16" AN426 Rivets.
NSN #5110-01-429-3694

ATI207A-3-P Female Dimple Die - Cold.
3/16" Shank Diameter, .56 Body Diameter, 1/4" Body Length for installing 3/32" AN426 Rivets.
NSN #5110-01-429-3577

ATI207A-4-P Female Dimple Die - Cold.
3/16" Shank Diameter, .62 Body Diameter, 1/4" Body Length for installing 1/8" AN426 Rivets.
NSN #5110-01-429-3582

ATI207A-5-P Female Dimple Die - Cold.
3/16" Shank Diameter, .68 Body Diameter, 1/4" Body Length for installing 5/32" AN426 Rivets.
NSN #5110-01-429-3596

ATI207A-6-P Female Dimple Die - Cold.
3/16" Shank Diameter, .75 Body Diameter, 1/4" Body Length for installing 3/16" AN426 Rivets.
NSN #5110-01-429-3616

ATI206A-3-R Male Dimple Die - Cold.
3/16" Shank Diameter, .56 Body Diameter, 3/8" Body Length for installing 3/32" AN426 Rivets.
NSN #5110-01-429-3684

ATI206A-4-R Male Dimple Die - Cold.
3/16" Shank Diameter, .62 Body Diameter, 3/8" Body Length for installing 1/8" AN426 Rivets.
NSN #5110-01-429-3687

ATI206A-5-R Male Dimple Die - Cold.
3/16" Shank Diameter, .68 Body Diameter, 3/8" Body Length for installing 5/32" AN426 Rivets.
NSN #5110-01-429-3689

ATI206A-6-R Male Dimple Die - Cold.
3/16" Shank Diameter, .87 Body Diameter, 3/8" Body Length for installing 3/16" AN426 Rivets.
NSN #5110-01-429-3691

ATI207A-3-R Female Dimple Die - Cold.
3/16" Shank Diameter, .56 Body Diameter, 3/8" Body Length for installing 3/32" AN426 Rivets.
NSN #5110-01-429-3579

ATI207A-4-R Female Dimple Die - Cold.
3/16" Shank Diameter, .62 Body Diameter, 3/8" Body Length for installing 1/8" AN426 Rivets.
NSN #5110-01-429-3592

ATI207A-5-R Female Dimple Die - Cold.
3/16" Shank Diameter, .68 Body Diameter, 3/8" Body Length for installing 5/32" AN426 Rivets.
NSN #5110-01-429-3593

ATI207A-6-R Female Dimple Die - Cold.
3/16" Shank Diameter, .75 Body Diameter, 3/8" Body Length for installing 3/16" AN426 Rivets.
NSN #5110-01-429-3608

ATI206A-3-S Male Dimple Die - Cold.
3/16" Shank Diameter, .56 Body Diameter, 1/2" Body Length for installing 3/32" AN426 Rivets.
NSN #5110-01-429-3688

ATI206A-4-S Male Dimple Die - Cold.
3/16" Shank Diameter, .62 Body Diameter, 1/2" Body Length for installing 1/8" AN426 Rivets.
NSN #5110-01-429-3690

ATI206A-5-S Male Dimple Die - Cold.
3/16" Shank Diameter, .68 Body Diameter, 1/2" Body Length for installing 5/32" AN426 Rivets.
NSN #5110-01-429-3693

ATI206A-6-S Male Dimple Die - Cold.
3/16" Shank Diameter, .87 Body Diameter, 1/2" Body Length for installing 3/16" AN426 Rivets.
NSN #5110-01-429-3573

ATI207A-3-S Female Dimple Die - Cold.
3/16" Shank Diameter, .56 Body Diameter, 1/2" Body Length for installing 3/32" AN426 Rivets.
NSN #5110-01-429-3584

ATI207A-4-S Female Dimple Die - Cold.
3/16" Shank Diameter, .62 Body Diameter, 1/2" Body Length for installing 1/8" AN426 Rivets.
NSN #5110-01-429-3606

ATI207A-5-S Female Dimple Die - Cold.
3/16" Shank Diameter, .68 Body Diameter, 1/2" Body Length for installing 5/32" AN426 Rivets.
NSN #5110-01-429-3598

ATI207A-6-S Female Dimple Die - Cold.
3/16" Shank Diameter, .75 Body Diameter, 1/2" Body Length for installing 3/16" AN426 Rivets.
NSN #5110-01-429-3610

Hi-Lok® Kits



ATISK3539A8

ATISK3539A8 Hi-Lok® Roller Clutch Wrench Kit.

Used for fastener installation in confined spaces. Kit includes 1/4" drive (zero backlash) roller clutch wrenches designed for maximum socket rotation with minimum handle movement. Hex sizes included are 7/32", 1/4", 5/16", 11/32", 3/8", 7/16".



ATISK3594K

ATISK3594K Comprehensive Hi-Lok® Kit - 1/4in Ratchet with Sockets and T-Hex Key.

Kit includes 1/4" square drive reversible ratchet, 1/4" square drive sockets included are 3/16", 7/32", 1/4", 9/32", 5/16", 11/32" and 3/8". The 1/16" hex key secures socket to ratchet drive. The 3/32" T-hex key engages the pin side of the Hi-Lok® fastener during installation.



ATISK359495K

ATISK359495K Comprehensive Hi-Lok® Kit - 1/4in and 3/8in Ratchet with Sockets and T-hex Keys.

Kit includes T-hex key and 1/4" and 3/8" square drive reversible ratchets respectively. Socket sizes for 1/4" square drive are 3/16", 7/32", 1/4", 9/32", 5/16", 11/32", 3/8". Socket sizes for 3/8" square drive are 3/8", 7/16", 1/2". Also included is a 1/16" Hex Key for securing sockets to ratchet drive. T-Hex keys included are 5/64", 3/32", 1/8", 5/32" for securing pin side of Hi-Lok® fastener during installation. NSN #5120-01-531-7011

**WARNING**

- Airframe tooling can cause flying chips.
- Wear safety goggles (user and bystanders).



Hi-Lok® Wrenches

Great Access to Tight Areas.

ATISK3539 1/4" Square Drive Hi-Lok® Roller Clutch Wrench - Black Handle.
Used for fastener installation in confined spaces. 1/4" drive, 3" handle length (zero backlash) roller clutch wrench is designed for maximum socket rotation with minimum handle movement. Can be used with any standard 1/4" drive socket.

ATISK3539BL 1/4" Square Drive Hi-Lok® Roller Clutch Wrench - Zinc Handle.
Used for fastener installation in confined spaces. 1/4" drive, 6" handle length (zero backlash) roller clutch wrench is designed for maximum socket rotation with minimum handle movement. Can be used with any standard 1/4" drive socket.

ATI3539IT38 Dedicated 3/8" Hex Hi-Lok® Roller Clutch Wrench - Black Handle.
Dedicated 3/8" hex, 3" handle length (zero backlash) roller clutch wrench is designed for maximum socket rotation with minimum handle movement. Used for fastener installation in confined spaces.

ATI3539IT732 Dedicated 7/32" Hex Hi-Lok® Roller Clutch Wrench - Black Handle.
Dedicated 7/32" hex, 3" handle length (zero backlash) roller clutch wrench is designed for maximum socket rotation with minimum handle movement. Used for fastener installation in confined spaces.



ATI3539IT38

ATISK3539L

ATI3539IT14 Dedicated 1/4" Hex Hi-Lok® Roller Clutch Wrench - Black Handle.
Dedicated 1/4" hex, 3" handle length (zero backlash) roller clutch wrench is designed for maximum socket rotation with minimum handle movement. Used for fastener installation in confined spaces.

ATI3539IT516 Dedicated 5/16" Hex Hi-Lok® Roller Clutch Wrench - Black Handle.
Dedicated 5/16" hex, 3" handle length (zero backlash) roller clutch wrench is designed for maximum socket rotation with minimum handle movement. Used for fastener installation in confined spaces.

ATISK3539L 1/4" Square Drive Hi-Lok® Roller Clutch Wrench - Black Handle.
Used for fastener installation in confined spaces. 1/4" drive, 6" handle length (zero backlash) roller clutch wrench is designed for maximum socket rotation with minimum handle movement. Can be used with any standard 1/4" drive socket.

ATI3539IT1132 Dedicated 11/32" Hex Hi-Lok® Roller Clutch Wrench - Black Handle.
Dedicated 11/32" hex, 3" handle length (zero backlash) roller clutch wrench is designed for maximum socket rotation with minimum handle movement. Used for fastener installation in confined spaces.

ATI3539IT716 Dedicated 7/16" Hex Hi-Lok® Roller Clutch Wrench - Black Handle.
Dedicated 7/16" hex, 3" handle length (zero backlash) roller clutch wrench is designed for maximum socket rotation with minimum handle movement. Used for fastener installation in confined spaces.

Hi-Lok® Flank Drive® Sockets

ATISK359619 Hi-Lok® Socket - 1/4" Square Drive - 3/16" Hex.
Chrome plated with set screw for securing socket to ratchet square drive.

ATISK359638 Hi-Lok® Socket - 1/4" Square Drive - 3/8" Hex.
Chrome plated with set screw for securing socket to ratchet square drive.

ATISK359622 Hi-Lok® Socket - 1/4" Square Drive - 7/32" Hex.
Chrome plated with set screw for securing socket to ratchet square drive.

ATISK359738 Hi-Lok® Socket - 3/8" Square Drive - 3/8" Hex.
Chrome plated with set screw for securing socket to ratchet square drive.

ATISK359631 Hi-Lok® Socket - 1/4" Square Drive - 5/16" Hex.
Chrome plated with set screw for securing socket to ratchet square drive.

ATISK359750 Hi-Lok® Socket - 3/8" Square Drive - 1/2" Hex.
Chrome plated with set screw for securing socket to ratchet square drive.

ATISK359638

ATISK359631

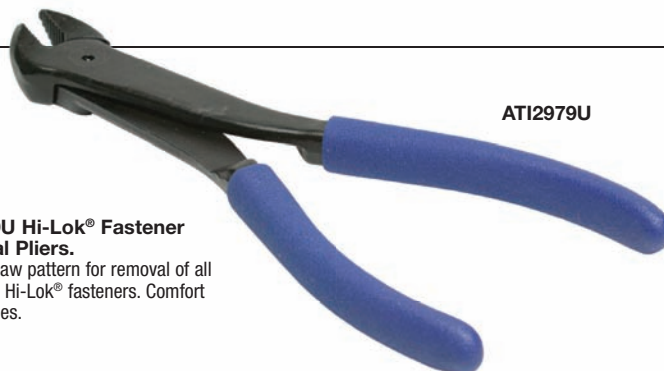
Hi-Lok® Removal Tools

ATISK3581-1/4 Hi-Lok® Removal Socket - 1/4" Fastener.
Grips the collar side of an installed 1/4" Hi-Lok® fastener for removal without damaging the skin. Works well with air and or hand operated 1/4" drive tools.



ATISK3581-1/4

ATI2979U Hi-Lok® Fastener Removal Pliers.
Serrated-jaw pattern for removal of all aluminum Hi-Lok® fasteners. Comfort grip handles.



ATI2979U

Ratchet

ATIFY936 Hi-Lok® 1/4" Square Drive Ratchet.
Very popular Hi-Lok® ratchet. Used in confined areas.

ATIFY936



ATISK3595

ATISK3595 Hi-Lok® 3/8" Square Drive Ratchet.
Standard, but popular Hi-Lok® ratchet. Used in confined areas.



Hi-Torque® Bits

ATIHTS-2



ATIHTS-3



ATIHTS-4



ATIHTS-2 #2 Hi-Torque® Bit - 1/4" Square Drive.
Blade thickness .059", width .295", 1/2" body diameter, 1" length.

ATIHTS-3 #3 Hi-Torque® Bit - 1/4" Square Drive.
Blade thickness .059", width .377", 1/2" body diameter, 1" length.

ATIHTS-4 #4 Hi-Torque® Bit - 1/4" Square Drive.
Blade thickness .073", width .502", 1/2" body diameter, 1" length.

Riveting Tool Kits



Clear zipper case included.

ATI590RGK3X

ATI590RGK3X Rivet Gun Kit.

Kit includes essentials for straight and offset riveting. Four commonly used bucking bars, eight cupped sets for 3/32", 1/8", 5/32" and 3/16", AN470 universal head rivets; three flush sets for AN426 rivets; two retainer springs, air regulator with durable case. NSN #5180-01-462-7729

ATI590RGK-4X Rivet Gun Kit.

Kit includes essentials for straight and offset riveting. Four commonly used bucking bars, eight cupped sets for 3/32", 1/8", 5/32" and 3/16", AN470 universal head rivets; three flush sets for AN426 rivets; two retainer springs, air regulator with durable case. NSN #5130-01-428-5692

Rivet Guns



ATIATC3X

ATIATC3X RIVET GUN PISTOL GRIP.
Power, control and industrial durability make these a popular choice for driving solid rivets. Both models have an excellent teasing trigger for precise control and upset uniformity. Beehive style retaining spring and air flow control valve are included. Most parts are interchangeable with Chicago Pneumatic "X" series rivet guns. Capacity 3/16" rivet, shank diameter .401, BPM 2160, length 6-1/2" and weight 3 lbs.



ATIATC4X

ATIATC4X RIVET GUN PISTOL GRIP.
Power, control and industrial durability make these a popular choice for driving solid rivets. Both models have an excellent teasing trigger for precise control and upset uniformity. Beehive style retaining spring and air flow control valve are included. Most parts are interchangeable with Chicago Pneumatic "X" series rivet guns. Capacity 1/4" rivet, shank diameter .401, BPM 1740, length 7-1/4" and weight 3 1/4" lbs.



WARNING

- Airframe tooling can cause flying chips.
- Wear safety goggles (user and bystanders).



Retaining Springs



ATI114C-3

ATI114C-3 Spring Retainer-Quick Change.
Quick change any rivet set that has safety spring shoulder, utilizes fast thumb release. Works with 3X and 4X rivet guns. Accommodates 1/2" and 5/8" body diameter rivet sets. NSN #5130-01-053-7939



ATI115A

ATI115A Retainer Spring-Beehive Type.
Ideal for production usage. Safely retains rivet sets in 3X and 4X rivet gun. Accepts straight and 10 degree sets with 1/2" body diameters. NSN #5130-01-048-3113

Angle Attachments



ATI595CK

ATI595B 90 - Degree Adaptor For Use On Sioux And Ingersoll - Rand 3X and 4X Rivet Gun.
For installing up to 5/32" diameter rivets. Uses ATI1757AP family of rivet sets. NSN #5130-01-522-9806

ATI595CK 90 - Degree Adaptor For Use On Chicago Pneumatic 3X and 4X Rivet Gun.
For installing up to 5/32" diameter rivets. Uses ATI1757AP family of rivet sets.

ATI595CK 90 - Degree Rivet Gun Adaptor Package.
Package includes one each AT595B rivet gun adaptor, four rivet sets for installing 1/8" AN470, 3/32" AN470, 5/32" AN470 and one flush head respectfully. 326b NSN #5130-01-406-9627

Rivet Sets, Straight Drive



ATI100A71/8 AN470



ATI100A2316 AN470

ATI100A214 AN470 Cupped Rivet Set 5/8" Body.
Straight-drive, 401 shank, 2 1/2" length for installing 1/4" AN470 rivet. NSN #5120-01-073-3999

ATI100A2-332 AN470 Cupped Rivet Set 1/2" Body.
Straight-drive, 401 shank, 2 1/2" length for installing 3/32" AN470 rivet. NSN #5120-01-073-3997

ATI100A3-1/8 AN470 Cupped Rivet Set 1/2" Body.
Straight-drive, 401 shank, 3 1/2" length for installing 1/8" AN470 rivet. NSN #5130-01-368-4479

ATI100A35/32 AN470 Cupped Rivet Set 1/2" Body.
Straight-drive, 401 shank, 3 1/2" length for installing 5/32" AN470 rivet. NSN #5130-01-368-4480

ATI100A51/8 AN470 Cupped Rivet Set 1/2" Body.
Straight-drive, 401 shank, 5 1/2" length for installing 1/8" AN470 rivet. NSN #5130-01-388-9854

ATI100A71/8 AN470 Cupped Rivet Set 1/2" Body.
Straight-drive, 401 shank, 7 1/2" length for installing 1/8" AN470 rivet. NSN #5130-01-388-9846

ATI100A75/32 AN470 Cupped Rivet Set 1/2" Body.
Straight-drive, 401 shank, 7 1/2" length for installing 5/32" AN470 rivet. NSN #5130-01-388-9886

ATI100A8332 AN470 Cupped Rivet Set 1/2" Body.
Straight-drive, 401 shank, 10 1/2" length for installing 3/32" AN470 rivet. NSN #5130-01-368-4486

ATI100A218 AN470 Cupped Rivet Set 1/2" Body.
Straight-drive, 401 shank, 2 1/2" length for installing 1/8" AN470 rivet. NSN #5120-01-073-3998

ATI100A2532 AN470 Cupped Rivet Set 1/2" Body.
Straight-drive, 401 shank, 2 1/2" length for installing 5/32" AN470 rivet. NSN #5120-01-073-3996

ATI100A33/16 AN470 Cupped Rivet Set 1/2" Body.
Straight-drive, 401 shank, 3 1/2" length for installing 3/16" AN470 rivet. NSN #5130-01-368-4481

ATI100A37/32 AN470 Cupped Rivet Set 1/2" Body.
Straight-drive, 401 shank, 3 1/2" length for installing 7/32" AN470 rivet.

ATI100A53/16 AN470 Cupped Rivet Set 1/2" Body.
Straight-drive, 401 shank, 5 1/2" length for installing 3/16" AN470 rivet. NSN #5130-01-388-9859

ATI100A73/16 AN470 Cupped Rivet Set 1/2" Body.
Straight-drive, 401 shank, 7 1/2" length for installing 3/16" AN470 rivet. NSN #5130-01-388-9850

ATI100A818 AN470 Cupped Rivet Set 1/2" Body.
Straight-drive, 401 shank, 10 1/2" length for installing 1/8" AN470 rivet. NSN #5130-01-368-4487

ATI100A8532 AN470 Cupped Rivet Set 1/2" Body.
Straight-drive, 401 shank, 10 1/2" length for installing 5/32" AN470 rivet. NSN #5130-01-368-4488

ATI100A2316 AN470 Cupped Rivet Set 1/2" Body.
Straight-drive, 401 shank, 2 1/2" length for installing 3/16" AN470 rivet.

ATI100A3-1/4 AN470 Cupped Rivet Set 5/8" Body.
Straight-drive, 401 shank, 3 1/2" length for installing 1/4" AN470 rivet. NSN #5130-01-388-9848

ATI100A33/32 AN470 Cupped Rivet Set 1/2" Body.
Straight-drive, 401 shank, 3 1/2" length for installing 3/32" AN470 rivet. NSN #5130-01-368-4478

ATI100A51/4 AN470 Cupped Rivet Set 5/8" Body.
Straight-drive, 401 shank, 5 1/2" length for installing 1/4" AN470 rivet. NSN #5130-01-388-9906

ATI100A53/32 AN470 Cupped Rivet Set 1/2" Body.
Straight-drive, 401 shank, 5 1/2" length for installing 3/32" AN470 rivet. NSN #5130-01-388-9862

ATI100A73/32 AN470 Cupped Rivet Set 1/2" Body.
Straight-drive, 401 shank, 7 1/2" length for installing 3/32" AN470 rivet. NSN #5130-01-388-9858

ATI100A8316 AN470 Cupped Rivet Set 1/2" Body.
Straight-drive, 401 shank, 10 1/2" length for installing 3/16" AN470 rivet. NSN #5130-01-368-4489



ATI100AF-3A

ATI100AF-3A Flush Rivet Set.
Straight-drive, 401 shank, 3 1/2" length for installing flush rivets. NSN #5130-01-368-4496

ATI100AF-5A Flush Rivet Set.
Straight-drive, 401 shank, 5 1/2" length for installing flush rivets. NSN #5130-01-388-9863

ATI100AF-3B Flush Rivet Set 5/8" Body.
Straight-drive, 401 shank, 3 1/2" length for installing flush rivets.

Rivet Sets, Offset Drive

ATI101A53/16 AN470



ATI101A3-1/4 AN470 Cupped Rivet Set - Offset 5/8" Body.
Offset-drive, 401 shank, 3 1/2" length for installing 1/4" AN470 rivet. NSN #5130-00-138-5288

ATI101A33/32 AN470 Cupped Rivet Set - Offset 1/2" Body.
Offset-drive, 401 shank, 3 1/2" length for installing 3/32" AN470 rivet. NSN #5130-01-368-4474

ATI101A518 AN470 Cupped Rivet Set - Offset 1/2" Body.
Offset-drive, 401 shank, 5 1/2" length for installing 1/8" AN470 rivet. NSN #5130-01-388-9887

ATI101A5-532 AN470 Cupped Rivet Set - Offset 1/2" Body.
Offset-drive, 401 shank, 5 1/2" length for installing 5/32" AN470 rivet. NSN #5130-01-388-9880

ATI101A75/32 AN470 Cupped Rivet Set - Offset 1/2" Body.
Offset-drive, 401 shank, 7 1/2" length for installing 5/32" AN470 rivet. NSN #5130-01-388-9885

ATI101A73/16 AN470



ATI101A3-1/8 AN470 Cupped Rivet Set - Offset 1/2" Body.
Offset-drive, 401 shank, 3 1/2" length for installing 1/8" AN470 rivet. NSN #5130-01-368-4475

ATI101A35/32 AN470 Cupped Rivet Set - Offset 1/2" Body.
Offset-drive, 401 shank, 3 1/2" length for installing 5/32" AN470 rivet. NSN #5130-01-368-4476

ATI101A53/16 AN470 Cupped Rivet Set - Offset 1/2" Body.
Offset-drive, 401 shank, 5 1/2" length for installing 3/16" AN470 rivet. NSN #5130-01-388-9868

ATI101A71/8 AN470 Cupped Rivet Set - Offset 1/2" Body.
Offset-drive, 401 shank, 7 1/2" length for installing 1/8" AN470 rivet. NSN #5130-01-388-9888

ATI101A33/16 AN470 Cupped Rivet Set - Offset 1/2" Body.
Offset-drive, 401 shank, 3 1/2" length for installing 3/16" AN470 rivet. NSN #5130-01-368-4477

ATI101A514 AN470 Cupped Rivet Set - Offset 5/8" Body.
Offset-drive, 401 shank, 5 1/2" length for installing 1/4" AN470 rivet. NSN #5130-01-388-9877

ATI101A53/32 AN470 Cupped Rivet Set - Offset 1/2" Body.
Offset-drive, 401 shank, 5 1/2" length for installing 3/32" AN470 rivet. NSN #5130-01-388-9873

ATI101A73/16 AN470 Cupped Rivet Set - Offset 1/2" Body.
Offset-drive, 401 shank, 7 1/2" length for installing 3/16" AN470 rivet. NSN #5130-01-388-9867



ATI104A-5/32 AN470

ATI104A-5/32 AN470 Cupped Rivet Set - Gooseneck.
Gooseneck-drive, 401 shank, 6 5/8" length for installing 5/32" AN470 rivets. Made from forged steel blank. NSN #5130-01-388-9851

ATI101AF-3A



ATI101AF-3A Flush Rivet Set - Offset.
Offset-drive, 401 shank, 3 1/2" length for installing flush rivets.

ATI101AF-5A Flush Rivet Set - 1/2" Body - Offset.
Offset-drive, 401 shank, 5 1/2" length for installing flush rivets.



ATI105A-3/16 AN470

ATI105A-1/8 AN470 Cupped Rivet Set Double Offset.
3/8" double offset, 401 shank, 5 3/4" length for installing 1/8" AN470 rivet. NSN #5130-01-388-9849

ATI105A-3/32 AN470 Cupped Rivet Set Double Offset.
3/8" double offset, 401 shank, 5 3/4" length for installing 3/32" AN470 rivet. NSN #5130-01-388-9861

ATI105A-3/16 AN470 Cupped Rivet Set Double Offset.
3/8" double offset, 401 shank, 5 3/4" length for installing 3/16" AN470 rivet. NSN #5130-01-388-9855

ATI105A-5/32 AN470 Cupped Rivet Set Double Offset.
3/8" double offset, 401 shank, 5 3/4" length for installing 5/32" AN470 rivet. NSN #5130-01-388-9842



ATI106A

ATI106A Flush Set Swivel.
Flush set ball swivel type, 401 shank, 3 1/2" length, 1 1/4" face with rubber guard and retainer spring for installing flush rivets. NSN #5130-00-084-2029

ATI107A-1 Flush Set Straight.
Flush set straight, 401 shank, 2 3/4" length, 1" diameter face for installing flush rivets. NSN #5130-01-388-9847

ATI107A-2 Flush Set Straight.
Flush set straight, 401 shank, 2 3/4" length, 1 1/4" diameter face for installing flush rivets. NSN #5130-01-388-9853

ATI107A-1



ATI107A-3 Flush Set Straight.
Flush set straight, 401 shank, 3 1/2" length, 1 1/4" diameter face for installing flush rivets. NSN #5130-01-368-4497

ATI107A-4 Flush Set Straight.
Flush set straight, 401 shank, 5 1/2" length, 1" diameter face for installing flush rivets. NSN #5130-01-388-9857

**WARNING**

- Airframe tooling can cause flying chips.
- Wear safety goggles (user and bystanders).



Rivet Sets



ATI107A-2D

ATI107A-2D Peening Tool.
Peening tool, .401 shank, 3 1/4" length, 1" diameter face, aluminum head for straightening aluminum after forming. NSN #5130-01-422-1483

ATI107A2DB Peening Tool.
Peening tool, .401 shank, 3 1/4" length, 1" diameter face, brass head for straightening aluminum after forming.



ATI110CB

ATI110CA Rivet Set - Flush, Anti - Slip Edge.
.401 shank, 2 1/2" length, 3/4" diameter face, rubber guard added to prevent slipping and damage to skin surface. NSN #5130-01-388-9860

ATI110CB Rivet Set - Flush, Anti - Slip Edge.
.401 shank, 2 1/2" length, 1" diameter face, rubber guard added to prevent slipping and damage to skin surface. NSN #5130-01-388-9864

ATI110CC Rivet Set - Flush, Anti - Slip Edge.
.401 shank, 2 1/2" length, 1 1/4" diameter face, rubber guard added to prevent slipping and damage to skin surface. NSN #5130-01-086-8885

ATI112A Rivet Set - Flush Mushroom Type.
.401 shank, 3" length, 1 7/8" diameter face, crowned for riveting thin sections without danger of denting or dishing skin surface. NSN #5130-01-388-9852



ATI112A

ATI113A-1 Flush Rivet Set - Extra Short.
.401 shank, 1 11/16" length, 3/4" diameter face, length of set allows riveting in limited areas.



ATI113A-1

ATI113A-2 Flush Rivet Set - Extra Short.
.401 shank, 1 13/16" length, 1" diameter face, length of set allows riveting in limited areas. NSN #5130-00-084-2032



ATI119A-1B

ATI119A-1B Rivet Set, Flush.
.401 Shank Diameter, 3/4" Face Diameter, 2-1/8" Overall Length. Stubby type for riveting in limited areas. Crowned face prevents damage to skin surface. NSN #5130-01-368-4498

ATI119A-2B Rivet Set, Flush.
.401 Shank Diameter, 1" Face Diameter, 2-1/8" Overall Length. Stubby type for riveting in limited areas. Crowned face prevents damage to skin surface. NSN #5130-01-388-9856

ATI119A-3B Rivet Set, Flush.
.401 Shank Diameter, 1 1/8" Face Diameter, 2-1/8" Overall Length. Stubby type for riveting in limited areas. Crowned face prevents damage to skin surface. NSN #5130-01-388-9889

ATI119A4B Rivet Set, Flush.
.401 Shank Diameter, 1 1/4" Face Diameter, 2-1/8" Overall Length. Stubby type for riveting in limited areas. Crowned face prevents damage to skin surface. NSN #5130-01-388-9875

ATI121A-3 Rivet Set, Flush, Offset.
.401 Shank Diameter, 10 Degree Offset, 1-1/4" Face Diameter, Crowned to prevent damage to skin surface. 3-1/2" Overall Length. NSN #5130-01-388-9883



ATI121A-3

ATI121A-4 Rivet Set, Flush, Offset.
.401 Shank Diameter, 10 Degree Offset, 1" Face Diameter, Crowned to prevent damage to skin surface. 5-1/2" Overall Length. NSN #5130-01-388-9871

ATI121A-6 Rivet Set, Flush, Offset.
.401 Shank Diameter, 10 Degree Offset, 1" Face Diameter, Crowned to prevent damage to skin surface. 7-1/2" Overall Length. NSN #5130-01-388-9882

Boeing® Rivet Sets



ATIST1111BK2

ATIST1111BK1 Boeing® Design - Rivet Set - Flush Anti - Slip Edge.
Manufactured to Boeing® specification, .401 shank, 2 1/2" length, 3/4" diameter face, polyurethane rim to prevent slipping and damage to skin surface.

ATIST1111BK2 Boeing® Design - Rivet Set - Flush Anti - Slip Edge.
Manufactured to Boeing® specification, .401 shank, 2 1/2" length, 1" diameter face, polyurethane rim to prevent slipping and damage to skin surface.

ATIST1111BK3 Boeing® Design - Rivet Set - Flush Anti - Slip Edge.
Manufactured to Boeing® specification, .401 shank, 2 5/16" length, 1 1/4" diameter face, polyurethane rim to prevent slipping and damage to skin surface.

ATI124B3



ATI124B3 Rivet Gun Shank Adaptor .401 To .498 Diameter.
 Extends tool 3". Use 5X, 9X and 7X guns with standard .401 tools.

Rivet Sets Extension and Adaptor



ATI124A-6 8in Extension For Rivet Sets.
 Rivet set extension, .401 shank diameter and recess.

ATI124A-6

Rivet Cutters



ATI501R

ATI501R Rivet Cutter - 3/32in - 1/4in - Standard Handles.
 Adjustable guide maintains rivet cutting length.



ATI501S

ATI501S Rivet Cutter - 3/32in - 1/4in - Long Handles.
 Adjustable guide maintains rivet cutting length, 13" tubular handles for additional leverage, developed for the U.S. Government. NSN #5110-00-180-2892

Rivet Grip Gauges



ATI2612

ATI2612 Grip Scale.
 Simple, self-explanatory scale determines material thickness and proper rivet grip length.



ATI269C3

ATI269C3 Cherry Max Grip Gauge.
 For Cherrymax and Cherrylock rivets.



WARNING

- Airframe tooling can cause flying chips.
- Wear safety goggles (user and bystanders).



Rivet Squeezing - Hand



ATI501A Hand Rivet Squeezer - 2 1/2in Reach.
1 1/8" gap jaws are heat-treated tool steel, 18" handles provides leverage for ease of operation. Uses standard 3/16" shank tools. NSN #5120-01-334-6450



ATI502AHE 360° Hand Rivet Squeezer - 3in Reach.
360-degree yoke locks in any position, 3/8" stroke and 5/8" ram length adjustment, eliminates the necessity of shims. Uses standard 3/16" shank tools. Can be used for cold dimpling. NSN #5120-01-221-9097



ATC502TH112 Tex Hand Squeezer with 1 1/2in Yoke.
High quality stainless steel adjustable ram, rivet squeezer.

ATI502AHD 360° Hand Rivet Squeezer - 1 1/2in Reach.
360-degree yoke locks in any position, 3/8" stroke and 5/8" ram length adjustment, eliminates the necessity of shims. Uses standard 3/16" shank tools. Can be used for cold dimpling. NSN #5120-00-928-6628

Rivet Squeezers



ATI108A33PC Rivet Squeezer Kit.
Kit includes 23 each of ATI108A cupped & 10 each of the ATI109 flush rivet squeezer set, 3/16" shank. For installing AN470 (MS20470) and AN426 rivets. NSN #5180-01-537-2420



ATI108AN1/8 Rivet Squeezer - Cupped.
3/16" Shank Diameter, 3/8" Body Diameter, 1/8" Body Length for installing 1/8" AN470 Cupped Rivets. NSN #5130-00-138-5298

ATI108AN3/16 Rivet Squeezer - Cupped.
3/16" Shank Diameter, 1/2" Body Diameter, 1/8" Body Length for Installing 3/16" AN470 Cupped Rivets.

ATI108AN3/32 Rivet Squeezer - Cupped.
3/16" Shank Diameter, 3/8" Body Diameter, 1/8" Body Length for Installing 3/32" AN470 Cupped Rivets. NSN #5130-01-397-2919

ATI108AN5/32 Rivet Squeezer - Cupped.
3/16" Shank Diameter, 1/2" Body Diameter, 1/8" Body Length for Installing 5/32" AN470 Cupped Rivets. NSN #5130-00-138-5302

ATI108AP1/4 Rivet Squeezer - Cupped.
3/16" Shank Diameter, 5/8" Body Diameter, 1/4" Body Length for Installing 1/4" AN470 Cupped Rivets. NSN #5130-01-397-2920

ATI108AP1/8 Rivet Squeezer - Cupped.
3/16" Shank Diameter, 3/8" Body Diameter, 1/4" Body Length for Installing 1/8" AN470 Cupped Rivets. NSN #5130-01-397-2921

ATI108AP3/16 Rivet Squeezer - Cupped.
3/16" Shank Diameter, 1/2" Body Diameter, 1/4" Body Length for Installing 3/16" AN470 Cupped Rivets. NSN #5130-01-397-2923

ATI108AP3/32 Rivet Squeezer - Cupped.
3/16" Shank Diameter, 3/8" Body Diameter, 1/4" Body Length for Installing 3/32" AN470 Cupped Rivets. NSN #5130-01-397-2925

CNC Machined, No Sharp Edges

ATI108AS1/8



ATI108AS3/32



ATI108AT3/16



32 RMS Finish

ATI108AP5/32 Rivet Squeezer - Cupped.
3/16" Shank Diameter, 1/2" Body Diameter, 1/4"
Body Length for Installing 5/32" AN470 Cupped
Rivets. NSN #5130-01-397-2924

ATI108AR14 Rivet Squeezer - Cupped.
3/16" Shank Diameter, 5/8" Body Diameter, 3/8"
Body Length for Installing 1/4" AN470 Cupped
Rivets.

ATI108AR1/8 Rivet Squeezer - Cupped.
3/16" Shank Diameter, 3/8" Body Diameter, 3/8"
Body Length for Installing 1/8" AN470 Cupped
Rivets. NSN #5130-01-397-2926

ATI108AR3/16 Rivet Squeezer - Cupped.
3/16" Shank Diameter, 1/2" Body Diameter, 3/8"
Body Length for Installing 3/16" AN470 Cupped
Rivets. NSN #5130-01-397-2927

ATI108AR3/32 Rivet Squeezer - Cupped.
3/16" Shank Diameter, 3/8" Body Diameter, 3/8"
Body Length for Installing 3/32" AN470 Cupped
Rivets. NSN #5130-01-397-2928

ATI108AR5/32 Rivet Squeezer - Cupped.
3/16" Shank Diameter, 1/2" Body Diameter, 3/8"
Body Length for Installing 5/32" AN470 Cupped
Rivets. NSN #5130-01-397-2929

ATI108AS1/4 Rivet Squeezer - Cupped.
3/16" Shank Diameter, 5/8" Body Diameter, 1/2"
Body Length for Installing 1/4" AN470 Cupped
Rivets. NSN #5130-01-138-5305

ATI108AS1/8 Rivet Squeezer - Cupped.
3/16" Shank Diameter, 3/8" Body Diameter, 1/2"
Body Length for Installing 1/8" AN470 Cupped
Rivets. NSN #5130-01-397-3095

ATI108AS3/16 Rivet Squeezer - Cupped.
3/16" Shank Diameter, 1/2" Body Diameter, 1/2"
Body Length for Installing 3/16" AN470 Cupped
Rivets. NSN #5130-01-397-3099

ATI108AS3/32 Rivet Squeezer - Cupped.
3/16" Shank Diameter, 3/8" Body Diameter, 1/2"
Body Length for Installing 3/32" AN470 Cupped
Rivets. NSN #5130-01-397-3097

ATI108AS5/32 Rivet Squeezer - Cupped.
3/16" Shank Diameter, 1/2" Body Diameter, 1/2"
Body Length for Installing 5/32" AN470 Cupped
Rivets. NSN #5130-01-397-3098

ATI108AT1/8 Rivet Squeezer - Cupped.
3/16" Shank Diameter, 3/8" Body Diameter, 5/8"
Body Length for Installing 1/8" AN470 Cupped
Rivets. NSN #5130-01-397-3101

ATI108AT3/16 Rivet Squeezer - Cupped.
3/16" Shank Diameter, 1/2" Body Diameter, 5/8"
Body Length for Installing 3/16" AN470 Cupped
Rivets. NSN #5130-01-397-3102

ATI108AT3/32 Rivet Squeezer - Cupped.
3/16" Shank Diameter, 3/8" Body Diameter, 5/8"
Body Length for Installing 3/32" AN470 Cupped
Rivets. NSN #5130-01-397-3100

ATI108AT5/32 Rivet Squeezer - Cupped.
3/16" Shank Diameter, 1/2" Body Diameter, 5/8"
Body Length for Installing 5/32" AN470 Cupped
Rivets. NSN #5130-01-397-3103

ATI108AW1/8 Rivet Squeezer - Cupped.
3/16" Shank Diameter, 3/8" Body Diameter, 3/4"
Body Length for Installing 1/8" AN470 Cupped
Rivets. NSN #5130-01-397-3105

ATI108AW3/32 Rivet Squeezer - Cupped.
3/16" Shank Diameter, 3/8" Body Diameter, 3/4"
Body Length for Installing 3/32" AN470 Cupped
Rivets. NSN #5130-01-397-3106

ATI108AW5/32 Rivet Squeezer - Cupped.
3/16" Shank Diameter, 1/2" Body Diameter, 3/4"
Body Length for Installing 5/32" AN470 Cupped
Rivets. NSN #5130-01-397-3107



ATI109EN



ATI109ER



ATI109ES



ATI109EW

16 RMS Finish

ATI109AN Rivet Squeezer - Flush.
3/16" Shank Diameter, 1/2" Body Diameter, 1/8" Body
Length for installing AN426 Flush Rivets.

ATI109AP Rivet Squeezer - Flush.
3/16" Shank Diameter, 1/2" Body Diameter, 1/4" Body
Length for installing AN426 Flush Rivets.

ATI109AR Rivet Squeezer - Flush.
3/16" Shank Diameter, 1/2" Body Diameter, 3/8" Body
Length for installing AN426 Flush Rivets.

ATI109AS Rivet Squeezer - Flush.
3/16" Shank Diameter, 1/2" Body Diameter, 1/2" Body
Length for installing AN426 Flush Rivets.

ATI109AT Rivet Squeezer - Flush.
3/16" Shank Diameter, 1/2" Body Diameter, 5/8" Body
Length for installing AN426 Flush Rivets.

ATI109AW Rivet Squeezer - Flush.
3/16" Shank Diameter, 1/2" Body Diameter, 3/4" Body
Length for installing AN426 Flush Rivets.

ATI109EN Rivet Squeezer - Flush.
3/16" Shank Diameter, 3/8" Body Diameter, 1/8" Body
Length for installing AN426 Flush Rivets.

ATI109EP Rivet Squeezer - Flush.
3/16" Shank Diameter, 3/8" Body Diameter, 1/4" Body
Length for installing AN426 Flush Rivets.

ATI109ER Rivet Squeezer - Flush.
3/16" Shank Diameter, 3/8" Body Diameter, 3/8" Body
Length for installing AN426 Flush Rivets.

ATI109ES Rivet Squeezer - Flush.
3/16" Shank Diameter, 3/8" Body Diameter, 1/2" Body
Length for installing AN426 Flush Rivets.

ATI109ET Rivet Squeezer - Flush.
3/16" Shank Diameter, 3/8" Body Diameter, 5/8" Body
Length for installing AN426 Flush Rivets.

ATI109EW Rivet Squeezer - Flush.
3/16" Shank Diameter, 3/8" Body Diameter, 3/4" Body
Length for installing AN426 Flush Rivets.

ATI493D-1



**ATI493D-1 Collar Cutter (Huck®) Lockbolt
L6 3/16in - Hollow Core - Threaded Shank.**
5/16" cutter diameter, 3/16" inside diameter, 1/4-28
threaded shank.

ATI493D-3



**ATI493D-3 Collar Cutter (Huck®) Lockbolt
L8 1/4in - Hollow Core - Threaded Shank.**
7/16" cutter diameter, 1/4" inside diameter, 1/4-28
threaded shank.

Huck® Removal



WARNING

- Airframe tooling can cause flying chips.
- Wear safety goggles (user and bystanders).



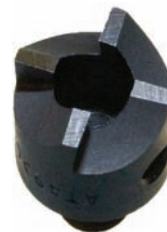
Hi-Shear® Removal

ATI493C-00 Collar Cutter (Hi-Shear®)
5/32" - Hollow Core - Threaded Shank.
 3/8" cutter diameter, 5/32" inside diameter,
 1/4-28 threaded shank.

ATI493C-2 Collar Cutter (Hi-Shear®)
1/4" - Hollow Core - Threaded Shank.
 1/2" cutter diameter, 1/4" inside diameter,
 1/4-28 threaded shank.

ATI493C-1 Collar Cutter (Hi-Shear®)
3/16" - Hollow Core - Threaded Shank.
 7/16" cutter diameter, 3/16" inside diameter,
 1/4-28 threaded shank.

ATI493C-3 Collar Cutter (Hi-Shear®)
5/16" - Hollow Core - Threaded Shank.
 9/16" cutter diameter, 5/16" inside diameter,
 1/4-28 threaded shank.



ATI493C-2

Huck® Removal

ATI2165-2 Chisel - Huck Lockbolt®.
 .401 Shank Diameter, .62 Head Diameter, 5/32" Rivet
 Size, 5-1/2" Over All Length. NSN #5130-01-368-4501

ATI2165-4 Chisel - Huck Lockbolt®.
 .401 Shank Diameter, .81 Head Diameter, 1/4" Rivet
 Size, 5-1/2" Over All Length. NSN #5130-01-368-4503

ATI1206-6 Flat Chisel.
 .401 Shank Diameter, 3/4" blade width, 6-3/4"
 overall length. NSN #5130-01-368-4500

ATI2165-3 Chisel - Huck Lockbolt®.
 .401 Shank Diameter, .75 Head Diameter, 3/16" Rivet
 Size, 5-1/2" Over All Length. NSN #5130-01-368-4502

ATI2165-5 Chisel - Huck Lockbolt®.
 .401 Shank Diameter, .81 Head Diameter, 5/16" Rivet
 Size, 5-1/2" Over All Length.

ATI2165-6 Chisel - Huck Lockbolt®.
 .401 Shank Diameter, .81 Head Diameter, 3/8" Rivet
 Size, 5-1/2" Over All Length. NSN #5130-01-528-8164



ATI2165-2

Hi-Shear® Installation Tools

ATI134GA Gooseneck Adaptor - Jiffy® Extension.
 Works with interchangeable inserts for Hi-Shear® collars, also
 accommodates Jiffy® sets, ATI1757 (cupped) and ATI1758
 (flush) rivet sets, and standard .401 shank diameter rivet sets.
 NSN #5130-01-368-4499



ATI134GA

Knock-Out Punches



ATI140A-3



ATI140A-6



ATI141A33/32

ATI140A-3 Knock Out Punch, Hi-Shear®.
 .401 Shank Diameter, 3/32" Rivet Size, 3-1/2" Overall Length.

ATI140A-4 Knock Out Punch, Hi-Shear®.
 .401 Shank Diameter, 1/8" Rivet Size, 3-1/2" Overall Length.

ATI140A-5 Knock Out Punch, Hi-Shear®.
 .401 Shank Diameter, 5/32" Rivet Size, 3-1/2" Overall Length.

ATI140A-6 Knock Out Punch, Hi-Shear®.
 .401 Shank Diameter, 3/16" Rivet Size, 3-1/2" Overall Length.

ATI140A-8 Knock Out Punch, Hi-Shear®.
 .401 Shank, Diameter 1/4" Rivet Size, 3-1/2" Overall Length.

ATI140A-10 Knock Out Punch, Hi-Shear®.
 .401 Shank Diameter, 5/16" Rivet Size, 3-1/2" Overall Length.

ATI141A33/32 Knock Out Punch.
 .401 Shank Diameter, 3/32" Rivet Size, 3-1/2" Overall Length.

ATI141A31/8 Knock Out Punch.
 .401 Shank Diameter, 1/8" Rivet Size, 3-1/2" Overall Length.

ATI141A35/32 Knock Out Punch.
 .401 Shank Diameter, 5/32" Rivet Size, 3-1/2" Overall Length.

ATI141A33/16 Knock Out Punch.
 .401 Shank Diameter, 3/16" Rivet Size, 3-1/2" Overall Length.

ATI141A31/4 Knock Out Punch.
 .401 Shank Diameter, 1/4" Rivet Size, 3-1/2" Overall Length

ATI141A35/16 Knock - Out Punch.
 .401 Shank Diameter, 5/16" Rivet Size, 3-1/2" Overall Length.

ATI141A33/8 Knock Out Punch.
 .401 Shank Diameter, 3/8" Rivet Size, 3-1/2" Overall Length.

Bucking Bars – Kits

ATI1001UK



ATI1001UK Trauma Reducing Bucking Bar Kit.
 Seriously reduces vibration. Adjustable tension.
 Five bucking bars and one ergonomic handle assembly.

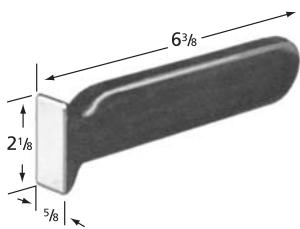
ATI590BBK



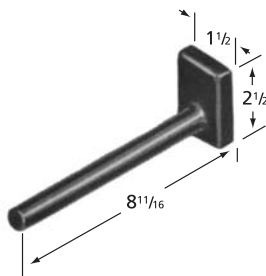
ATI590BBK 4 - Piece Bucking Bar Set.
 Set includes ATI638, ATI647, ATI670 and ATI681.
 Please refer to bucking bar specifications.

Bucking Bars

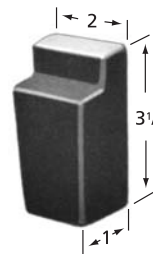
CNC Machined 32 RMS Finish.



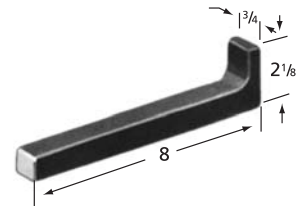
ATI602 Bucking Bar.
 1.5 lbs (.68 kg)
 NSN #5120-01-368-4236



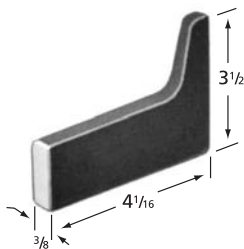
ATI604 Bucking Bar.
 1.5 lbs (.68 kg)
 NSN #5120-01-368-4238



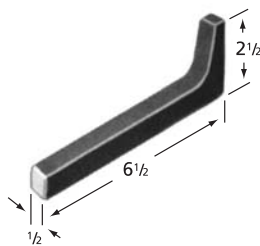
ATI605 Bucking Bar.
 1.5 lbs (.68 kg)
 NSN #5120-01-368-4351



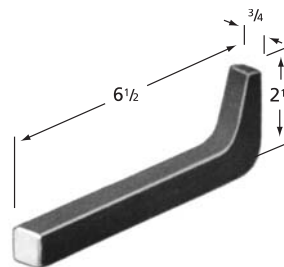
ATI608 Bucking Bar.
 1.25 lbs (.57 kg)
 NSN #5120-01-368-4241



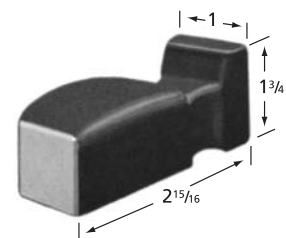
ATI610 Bucking Bar.
 .75 lb (.34 kg)
 NSN #5120-01-368-4353



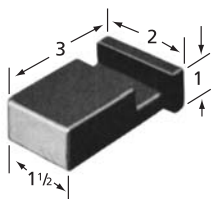
ATI611 Bucking Bar.
 1 lb (.45 kg)
 NSN #5120-01-368-4243



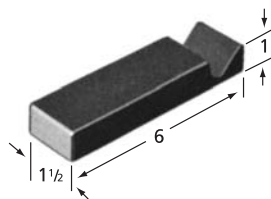
ATI612 Bucking Bar.
 1.25 lbs (.57 kg)
 NSN #5120-01-368-4244



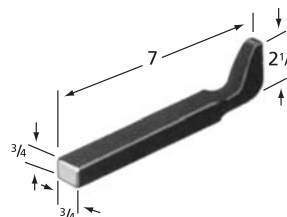
ATI616 Bucking Bar.
 1 lb (.45 kg)
 NSN #5120-01-368-4246



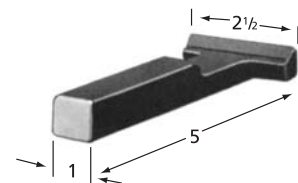
ATI619 Bucking Bar.
 1.25 lbs (.57 kg)
 NSN #5120-01-368-4355



ATI622 Bucking Bar.
 2.5 lbs (1.13 kgs)
 NSN #5120-01-368-4224



ATI629 Bucking Bar.
 1 lb (.45 kg)
 NSN #5120-01-368-4230



ATI633 Bucking Bar.
 1.5 lbs (.68 kg)
 NSN #5120-01-368-4233

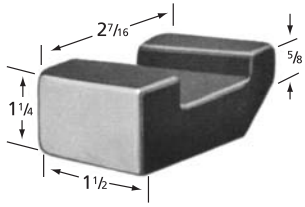


WARNING

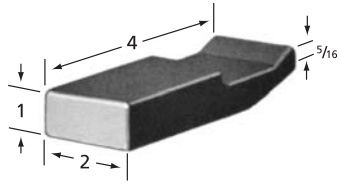
- Airframe tooling can cause flying chips.
- Wear safety goggles (user and bystanders).



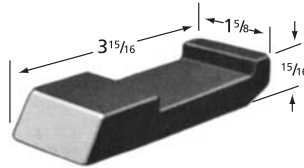
All Sharp Corners & Edges Are Radiused 1/32" - 1/16".



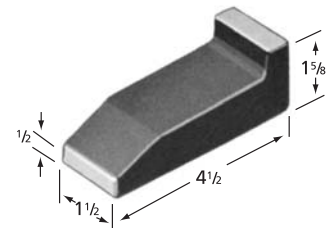
ATI634 Bucking Bar.
1 lbs (.45 kg)
NSN #5120-01-368-4356



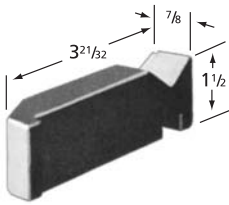
ATI637 Bucking Bar.
1.75 lbs (.79 kg)
NSN #5120-01-368-4235



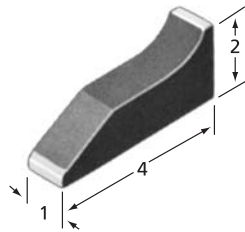
ATI638 Bucking Bar.
1.25 lbs (.57 kg)
NSN #5120-01-368-4292



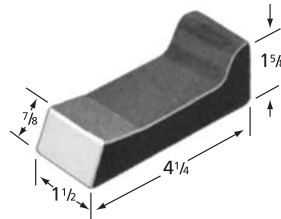
ATI639 Bucking Bar.
2 lbs (.91 kg)
NSN #5120-01-368-4293



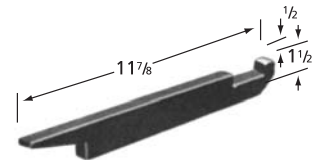
ATI643 Bucking Bar.
1.25 lbs (.57 kg)
NSN #5120-01-368-4297



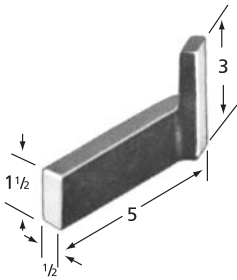
ATI647 Bucking Bar.
1.5 lbs (.68 kg)
NSN #5120-01-368-4358



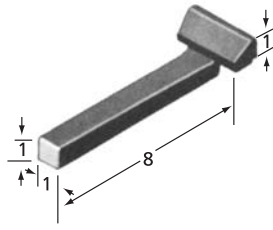
ATI648 Bucking Bar.
1.5 lbs (.68 kg)
NSN #5120-01-368-4299



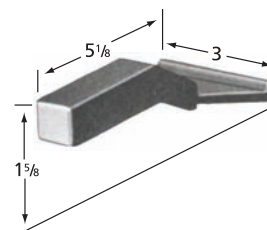
ATI649 Bucking Bar.
2 lbs (.91 kg)
NSN #5120-01-368-4359



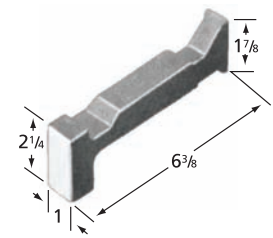
ATI656 Bucking Bar.
1.25 lbs (.57 kg)
NSN #5120-01-368-4303



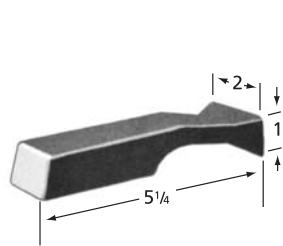
ATI668 Bucking Bar.
3 lbs (1.36 kgs)
NSN #5120-01-368-4280



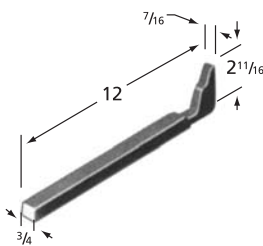
ATI669 Bucking Bar.
1.5 lbs (.68 kg)
NSN #5120-01-368-4363



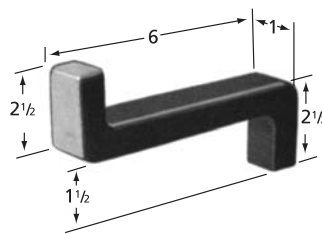
ATI670 Bucking Bar.
2 lbs (.91 kg)
NSN #5120-01-368-4364



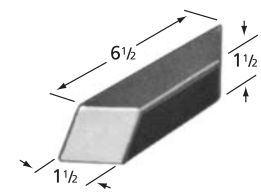
ATI681 Bucking Bar.
1.5 lbs (.68 kg)
NSN #5120-01-368-4287



ATI685 Bucking Bar.
2 lbs (.91 kg)
NSN #5120-01-368-4290

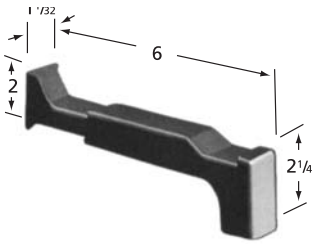


ATI690 Bucking Bar.
2.5 lbs (1.13 kgs)
NSN #5120-01-368-4367

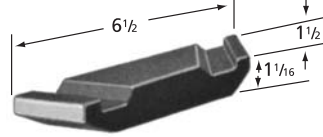


ATI692 Bucking Bar.
3.25 lbs (1.47 kgs)
NSN #5120-01-368-4352

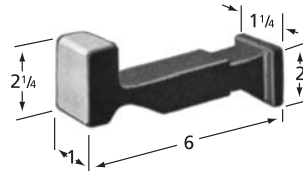
Smooth Edges Prevent Skin Damage.



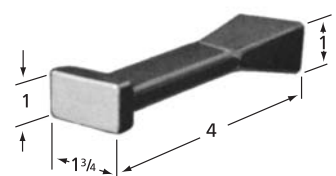
ATI694 Bucking Bar.
2 lbs (.91 kg)
NSN #5120-01-368-4308



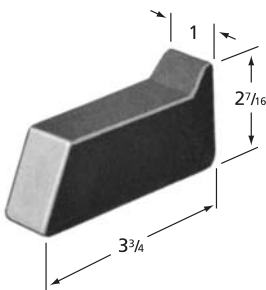
ATI702 Bucking Bar.
2 lbs (.91 kg)
NSN #5120-01-368-4314



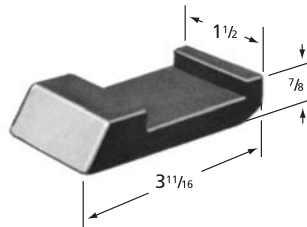
ATI719 Bucking Bar.
2 lbs (.91 kg)
NSN #5120-01-368-4320



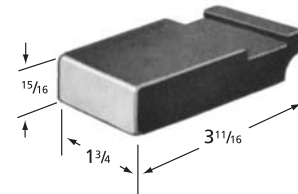
ATI720 Bucking Bar.
.75 lb (.34 kg)
NSN #5120-01-368-4321



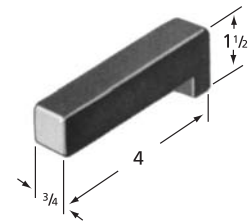
ATI721 Bucking Bar.
1.75 lbs (.79 kg)
NSN #5120-01-368-4247



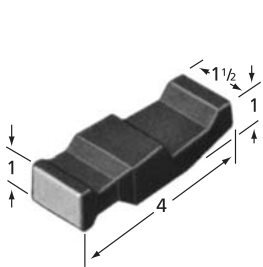
ATI722 Bucking Bar.
1 lb (.45 kg)
NSN #5120-01-368-4248



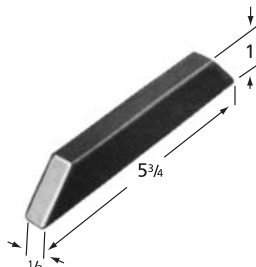
ATI723 Bucking Bar.
1.25 lbs (.57 kg)
NSN #5120-01-368-4249



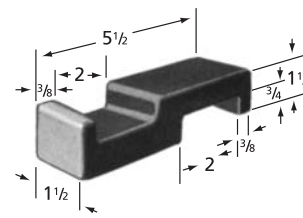
ATI727 Bucking Bar.
1 lb (.45 kg)
NSN #5120-01-368-4252



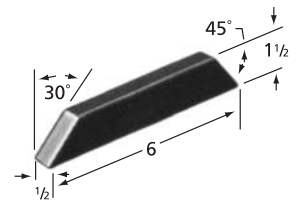
ATI730 Bucking Bar.
1.25 lbs (.57 kg)
NSN #5120-01-368-4255



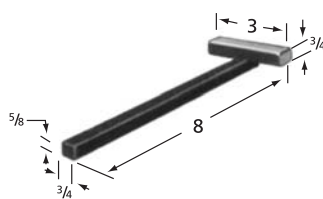
ATI732 Bucking Bar.
.75 lb (.34 kg)
NSN #5120-01-368-4257



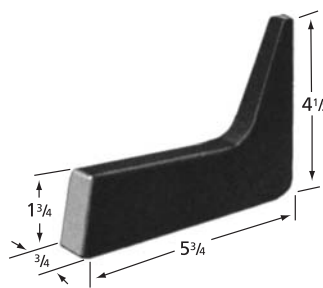
ATI736 Bucking Bar.
2.25 lbs (1.02 kgs)
NSN #5120-01-368-4259



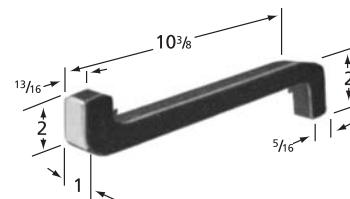
ATI737 Bucking Bar.
1 lb (.45 kg)
NSN #5120-01-368-4260



ATI750D-23 Bucking Bar.
1.75 lbs (.79 kg)
NSN #5120-01-368-4261



ATI750N-1 Bucking Bar.
2.5 lbs (1.13 kgs)
NSN #5120-01-368-4328



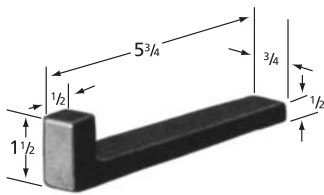
ATI750S-1 Bucking Bar.
2.75 lbs (1.25 kgs)
NSN #5120-01-368-4330



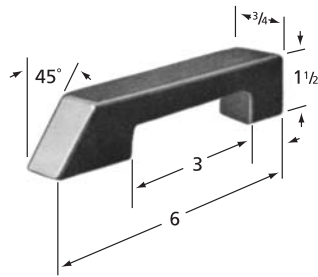
WARNING

- Airframe tooling can cause flying chips.
- Wear safety goggles (user and bystanders).

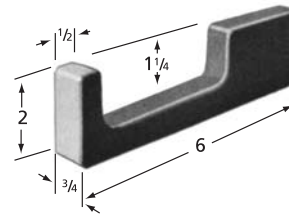




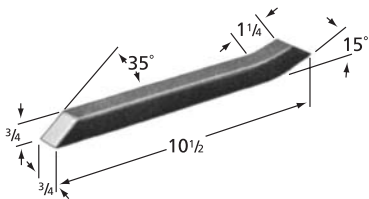
ATI751Y-11 Bucking Bar.
.75 lb (.34 kg)
NSN #5120-01-368-4268



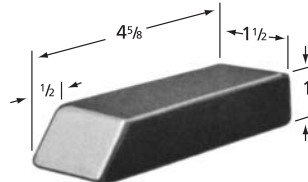
ATI760B-2 Bucking Bar.
1.25 lbs (.57 kg)
NSN #5120-01-368-4340



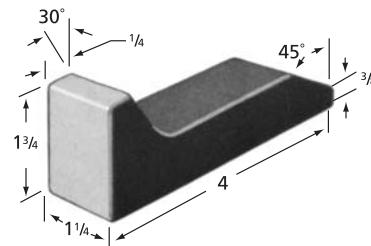
ATI760B-3 Bucking Bar.
1.75 lbs (.79 kg)
NSN #5120-01-368-4341



ATI760B-7 Bucking Bar.
1.5 lbs (.68 kg)
NSN #5120-01-368-4342



ATI760B-10 Bucking Bar.
2 lbs (.91 kg)
NSN #5120-01-368-4344



ATI763 Bucking Bar.
1.25 lbs (.57 kg)
NSN #5120-01-368-4349

Screw Removal

ATI540 Screw Removal Tool - 9" Length - 3/8" Square Drive.
.401" shank diameter, 9" overall length, use with optional ATI540SE-5 1/4" hex-bit adaptor.
NSN #5130-01-368-4504

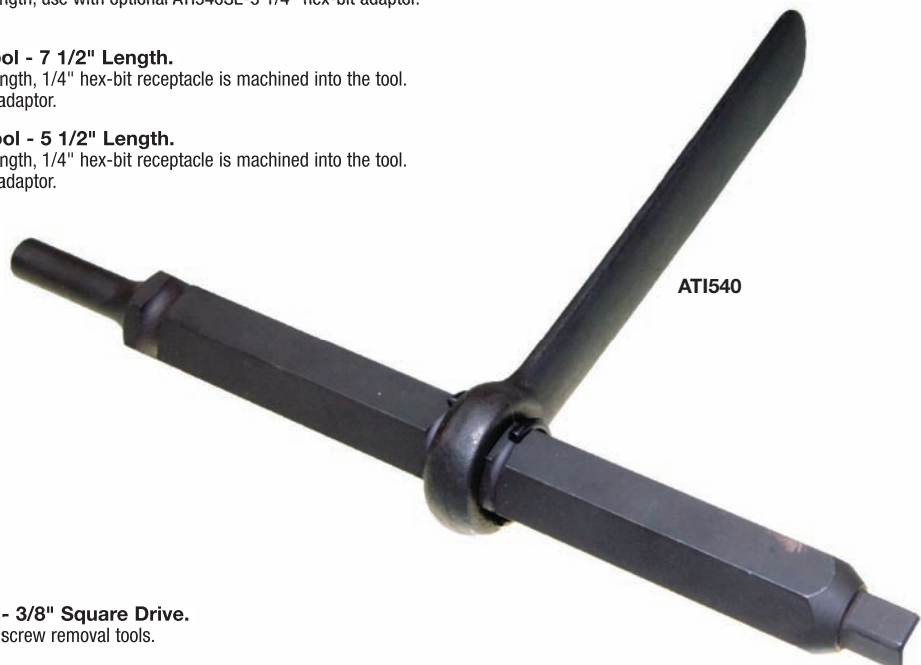
ATI540S Screw Removal Tool - 4 1/2" Length - 3/8" Square Drive.
.401" shank diameter, 4 1/2" overall length, use with optional ATI540SE-5 1/4" hex-bit adaptor.
NSN #5120-01-418-9395

ATI540BL-7 Screw Removal Tool - 7 1/2" Length.
.401" shank diameter, 7 1/2" overall length, 1/4" hex-bit receptacle is machined into the tool.
Eliminates requirement for the hex-bit adaptor.

ATI540BS-5 Screw Removal Tool - 5 1/2" Length.
.401" shank diameter, 5 1/2" overall length, 1/4" hex-bit receptacle is machined into the tool.
Eliminates requirement for the hex-bit adaptor.



ATI540SE-5



ATI540

ATI540SE-5 1/4" Hex - Bit Adaptor - 3/8" Square Drive.
Use in conjunction with ATI540 and ATI540S screw removal tools.

Rivet Shaver and Kit

ATI590L

**ATI590L Rivet Shaver Kit.**

Known as the micro miller kit. Includes a .75 hp, 20,000 rpm rivet shaver, cutters and skirts for 5/16", 3/8", 7/16", 1/2", 9/16", 5/8" and 3/4".



ATI429SXC

ATI429SXC Micro Miller - Rivet Shaver Gun.

3/4" cutter capacity, .0005" incremental depth adjustment, 1/4"-28 internal threaded spindle, utilizes Sioux® motor, .75 HP at 20,000 rpm, comfort grip, 2-1/2 lbs. NSN #5130-01-370-6734

Skirts

ATI429A-1 Skirt Detail - Micro Miller.

5/16" cutter capacity used with ATI429B-1 cutter. Skirt and cutter are used with ATI429SXC Micro Miller rivet shaver. Exclusive only to ATI products.

ATI429A-7

**ATI429A-2 Skirt Detail - Micro Miller.**

3/8" cutter capacity used with ATI429B2 cutter. Skirt and cutter are used with ATI429SXC Micro Miller rivet shaver. Exclusive only to ATI products.

ATI429A-4 Skirt Detail - Micro Miller.

1/2" cutter capacity used with ATI429B-4 cutter. Skirt and cutter are used with ATI429SXC Micro Miller rivet shaver. Exclusive only to ATI products.

ATI429A-6 Skirt Detail - Micro Miller.

5/8" cutter capacity used with ATI429B-5 cutter. Skirt and cutter are used with ATI429SXC Micro Miller rivet shaver. Exclusive only to ATI products.

ATI429A-3 Skirt Detail - Micro Miller.

7/16" cutter capacity used with ATI429B-3 cutter. Skirt and cutter are used with ATI429SXC Micro Miller rivet shaver. Exclusive only to ATI products.

ATI429A-5 Skirt Detail - Micro Miller.

9/16" cutter capacity used with ATI429B-5 cutter. Skirt and cutter are used with ATI429SXC Micro Miller rivet shaver. Exclusive only to ATI products.

ATI429A-7 Skirt Detail - Micro Miller.

3/4" cutter capacity used with ATI429B-6 cutter. Skirt and cutter are used with ATI429SXC Micro Miller rivet shaver. Exclusive only to ATI products.

Cutters – Micro Miller

ATI429B-1 Cutter Detail - Micro Miller.

5/16" diameter carbide cutter used with ATI429A-1 skirt. Cutter and skirt are used with ATI429SXC Micro Miller rivet shaver or any 1/4-28" threaded Micro Miller.

ATI429B-6

**ATI429B-3 Cutter Detail - Micro Miller.**

7/16" diameter carbide cutter used with ATI429A-3 skirt. Cutter and skirt are used with ATI429SXC Micro Miller rivet shaver or any 1/4-28" threaded Micro Miller.

ATI429B-4 Cutter Detail - Micro Miller.

1/2" diameter carbide cutter used with ATI429A-4 skirt. Cutter and skirt are used with ATI429SXC Micro Miller rivet shaver or any 1/4-28" threaded Micro Miller.

ATI429B-6 Cutter Detail - Micro Miller.

5/8" diameter carbide cutter used with ATI429A-6 skirt. Cutter and skirt are used with ATI429SXC Micro Miller rivet shaver or any 1/4-28" threaded Micro Miller.

ATI429B2 Cutter Detail - Micro Miller.

3/8" diameter carbide cutter used with ATI429A-2 skirt. Cutter and skirt are used with ATI429SXC Micro Miller rivet shaver or any 1/4-28" threaded Micro Miller.

ATI429B-5 Cutter Detail - Micro Miller.

9/16" diameter carbide cutter used with ATI429A-5 skirt. Cutter and skirt are used with ATI429SXC Micro Miller rivet shaver or any 1/4-28" threaded Micro Miller.

ATI429B-7 Cutter Detail - Micro Miller.

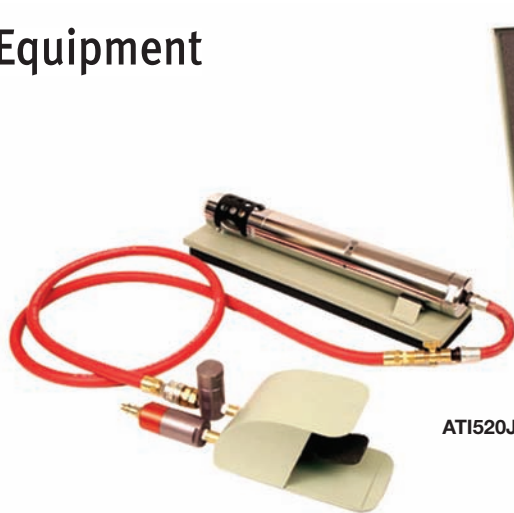
3/4" diameter carbide cutter used with ATI429A-7 skirt. Cutter and skirt are used with ATI429SXC Micro Miller rivet shaver or any 1/4-28" threaded Micro Miller.

**WARNING**

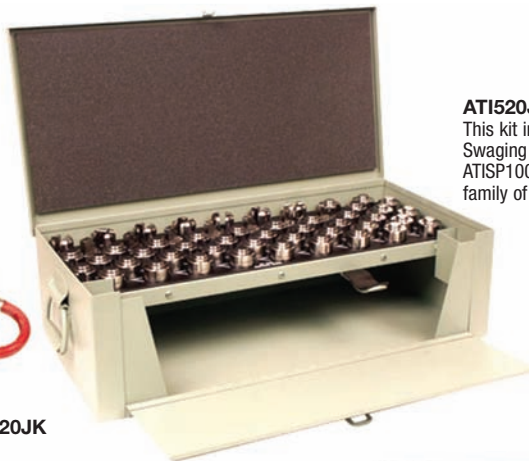
- Airframe tooling can cause flying chips.
- Wear safety goggles (user and bystanders).



Equipment



ATI520JK



ATI520JK Cable Swager - Portable Kit.
This kit includes ATI520J Swager, ATI520SG Swaging Gauge, Felco C7 hand cable cutters, ATISP1001 Turnbuckle Wrench, and 27 ATI520 family of dies. NSN #5130-00-712-4855



ATI520J

ATI520J Cable Swager - Portable Unit.

This light weight unit is designed to precision-swage cable terminals. It can be used as a bench unit when mounted on the shock absorbing base, or taken directly to the scene of operation. The unit includes base plate, air hose and foot control. Dies must be ordered separately, see ATI520 family of dies. NSN #5130-01-212-9426



ATI520H

ATI520H Hydraulic Swager With Enerpac®.

Unit accommodates cable sizes to 3/8" and operates on an air supply of 100-120 psi. Swaging is performed by applying a designated number of pressure increments while rotating the cable-terminal assembly. An adaptor is provided which allows the ATI520H to accept standard ATI520 family of swaging dies, used with both the ATI520J and ATI520D pneumatic swagers.

Swaging Dies

ATI520CD-2



ATI520CD-2 Cutter Die - 1/16" Cable.

Female side of the cutter die, packaged individually. Perfectly cuts and/or trims cable strands flush with ball end. Eliminates ragged ends. Used with ATI520CP-2 male punch die.

ATI520CD-4 Cutter Die - 1/8" Cable.

Female side of the cutter die, packaged individually. Perfectly cuts and/or trims cable strands flush with ball end. Eliminates ragged ends. Used with ATI520CP-4 male punch die. NSN #5130-01-024-4011

ATI520CD-5 Cutter Die - 5/32" Cable.

Female side of the cutter die, packaged individually. Perfectly cuts and/or trims cable strands flush with ball end. Eliminates ragged ends. Used with ATI520CP-5 male punch die.



ATI520CP-2

ATI520CP-2 Punch Die - 1/16" Cable.

Male side of the cutter die, packaged individually. Perfectly cuts and/or trims cable strands flush with ball end. Eliminates ragged ends. Used with ATI520CD-2 female cutter die. Requires the use of spacer ATI520SP behind punch die.

ATI520CP-5 Punch Die - 5/32" Cable.

Male side of the cutter die, packaged individually. Perfectly cuts and/or trims cable strands flush with ball end. Eliminates ragged ends. Used with ATI520CD-2 female cutter die. Requires the use of spacer ATI520SP behind punch die.

ATI520CP-6 Punch Die - 3/16" Cable.

Male side of the cutter die, packaged individually. Perfectly cuts and/or trims cable strands flush with ball end. Eliminates ragged ends. Used with ATI520CD-2 female cutter die. Requires the use of spacer ATI520SP behind punch die.

ATI520CB-4



ATI520CB-2 Swaging Dies - 1/16" Cable Diameter.
Swages 3/16" diameter round ball-end terminal to cable.
Packaged as a matched pair.

ATI520CB-3 Swaging Dies - 3/32" Cable Diameter.
Swages 1/4" diameter round ball-end terminal to cable.
Packaged as a matched pair. NSN #5130-01-005-8884

ATI520CB-4 Swaging Dies - 1/8" Cable Diameter.
Swages 5/16" diameter round ball-end terminal to cable.
Packaged as a matched pair.

ATI520CDB-3



ATI520CDB-2 Swaging Dies - 1/16" Cable Diameter.
Swages MS20663-2 terminal to cable. Packaged as a matched pair.

ATI520CDB-3 Swaging Dies - 3/32" Cable Diameter.
Swages MS20663-3 terminal to cable. Packaged as a matched pair.

ATI520CDB-4 Swaging Dies - 1/8" Cable Diameter.
Swages MS20663-4 terminal to cable. Packaged as a matched pair.



ATI520CS-5

ATI520CS-2 Swaging Dies - 1/16" Cable Diameter.
Swages MS21259-2, MS20667-2, MS20668-2, MS21260-2 terminal to cable. Packaged as a matched pair.

ATI520CS-4 Swaging Dies - 1/8" Cable Diameter.
Swages MS21259-4, MS20667-4, MS20668-4, MS21260-4 and Boeing stop terminal BACT14A-3 to cable. Packaged as a matched pair.
NSN #5130-01-024-3054

ATI520CS-6 Swaging Dies - 3/16" Cable Diameter.
Swages MS21259-6, MS20667-6, MS20668-6, MS21260-6 and Boeing stop terminal BACT14A-5 to cable. Packaged as a matched pair.

ATI520CS-3 Swaging Dies - 3/32" Cable Diameter.
Swages MS21259-3, MS20667-3, MS20668-3, MS21260-3 and Boeing stop terminal BACT14A-2 to cable. Packaged as a matched pair.
NSN #5130-00-506-9964

ATI520CS-5 Swaging Dies - 5/32" Cable Diameter.
Swages MS21259-5, MS20667-5, MS20668-5, MS21260-5 and Boeing stop terminal BACT14A-4 to cable. Packaged as a matched pair.

ATI520CS-7 Swaging Dies - 7/32" Cable Diameter.
Swages MS21259-7, MS20667-7, MS20668-7, MS21260-7 and Boeing stop terminal BACT14A-8 to cable. Packaged as a matched pair.

ATI520CSB-3



ATI520CSB-2 Swaging Dies - 1/16" Cable Diameter.
Swages MS20664-2 terminal to cable. Packaged as a matched pair. NSN #5120-01-292-4516

ATI520CSB-3 Swaging Dies - 3/32" Cable Diameter.
Swages MS20664-3 terminal to cable. Packaged as a matched pair. NSN #5120-01-362-3318

ATI520CSB-4 Swaging Dies - 1/8" Cable Diameter.
Swages MS20664-4 terminal to cable. Packaged as a matched pair. NSN #5130-01-393-1283

ATI520CSB-6 Swaging Dies - 3/16" Cable Diameter.
Swages MS20664-6 terminal to cable. Packaged as a matched pair.

ATI520SG



ATI520SG Swaging Go - Limit Gauges.
Multiple gauges designed to check all swaged terminals within the designed range of the ATI520D and ATI520J swagers.

Gauge, Swaged Terminal



WARNING

- Airframe tooling can cause flying chips.
- Wear safety goggles (user and bystanders).



Pull Testers



AT1520CT

AT1520CT Pull Tester - Portable - Instrumentation Only.
Self-contained hydraulic unit in which the tensile load applied to the cable and terminal assembly is produced by developing pressure in a hydraulic cylinder. The pressure in the cylinder is related to the pounds tension applied to the terminal and cable assembly, and is indicated by a direct-reading pressure gage calibrated in pounds tension. The face of the gage is graduated and indicated by cable size, and the respective 60% rated tensile strength. This terminal tester has the capacity to pull-test sizes and types of terminals which can be swaged by the AT520J or AT520D

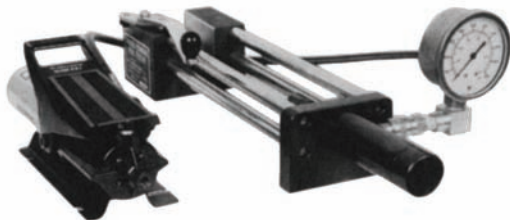
During testing, the cable is held between two soft copper blocks which have been designed to avoid damage to the cable. The basic unit weighs 24 3/4 lbs., is 5 3/4" wide, 10 1/4" high and 23 1/8" length. Allows proof-loading of swaged terminals after the cable has been installed. Note: Must be used with optional ATI adaptors and jaws sold separately.



AT1520CTK

AT1520CTK Pull Tester Kit.

Kit includes AT1520CT self-contained hydraulic unit and all necessary pull tester hardware, adaptors and jaws required. Note: See AT1520CT for unit specifications. NSN #6635-00-864-3511



AT1520HTK

AT1520HTK Hydraulic Pull Tester Kit.

The AT1520HTK Hydraulic Pull Tester Kit, provides pull-test capabilities for all swaged terminal assemblies listed in this section.

Calibration Kit

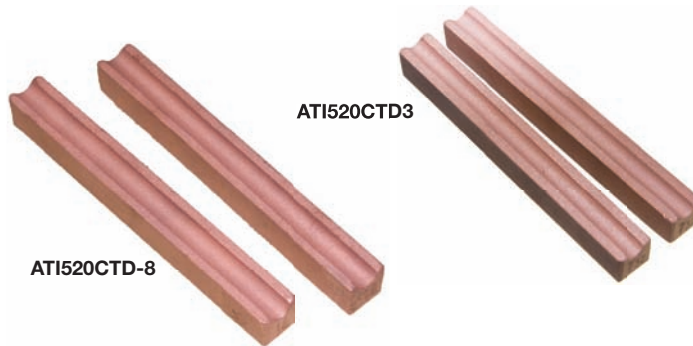
AT1520CGC Pull Tester Calibration Kit.

This exclusive kit includes adaptors required to certify ATI Pull Tester Equipment part number AT1520CT. Quality assurance tool recognized by the Boeing Company. This instrument will eliminate the necessity of costly outside calibration service. NSN #4920-00-949-9409



AT1520CGC

Pull Tester Replacement Jaws



AT1520CTD3 Pull Tester Cable Jaws - 3/32".

Jaws are made of dead soft copper and will not damage the braided steel cable. Use in conjunction with AT1520CT Pull Tester. NSN #5120-01-465-3706

AT1520CTD4 Pull Tester Cable Jaws - 1/8".

Jaws are made of dead soft copper and will not damage the braided steel cable. Use in conjunction with AT1520CT Pull Tester.

AT1520CTD-7 Pull Tester Cable Jaws - 7/32".

Jaws are made of dead soft copper and will not damage the braided steel cable. Use in conjunction with AT1520CT Pull Tester.

AT1520CTD-8 Pull Tester Cable Jaws - 1/4".

Jaws are made of dead soft copper and will not damage the braided steel cable. Use in conjunction with AT1520CT Pull Tester.

Turnbuckle Wrench



ATISP1001 Turnbuckle Tool - 12".

The tool consists of two clamps joined by a 12-inch sprocket chain. When clamped to cable-end fittings on each side of the turnbuckle, the cable becomes stationary, allowing free turnbuckle adjustment. Cable rigging tool assist in adjusting turnbuckles on aircraft cable.

Mina Vac – Plastic Body



AT1560C Mina - Vac Power Unit Sub - Assembly - Plastic Housing.

Plastic sub-assembly capable of pulling up to six inches of mercury. Flex and/or rigid extension tubes not included. Choose appropriate part number from the AT1560C family of extension tubes.

Mina Vac – Aluminum



AT1560A Mina - Vac Power Unit Sub - Assembly - Aluminum Housing.

Aluminum sub-assembly capable of pulling over four inches of mercury. Flex and/or rigid extension tubes not included. Choose appropriate part number from the AT1560C family of extension tubes.

Note: Select Tubes on page 124.



WARNING

- Airframe tooling can cause flying chips.
- Wear safety goggles (user and bystanders).



Mina Vac – Cast Aluminum

ATI560M Mina - Vac Power Unit Sub - Assembly - Aluminum Housing.
Powerful one-piece aluminum sub-assembly with larger venturi that pulls up to six inches of mercury. Removes objects such as sheet fasteners up to 3/4" diameter from confined spaces. NSN #7910-01-551-1384

ATI560MF12 Mina - Vac Air Vacuum With 12" Clear Flex Hose.
Powerful one-piece aluminum vacuum that pulls up to six inches of mercury with a 12" clear flex hose. Removes objects such as sheet fasteners up to 3/4" diameter from confined spaces.

ATI560MF18 Mina - Vac Air Vacuum With 18" Clear Flex Hose.
Powerful one-piece aluminum vacuum that pulls up to six inches of mercury with a 18" clear flex hose. Removes objects such as sheet fasteners up to 3/4" diameter from confined spaces. NSN #5130-01-368-5861

ATI560MF24 Mina - Vac Air Vacuum With 24" Clear Flex Hose.
Powerful one-piece aluminum vacuum that pulls up to six inches of mercury with a 24" clear flex hose. Removes objects such as sheet fasteners up to 3/4" diameter from confined spaces.

ATI560MR-12 Mina - Vac Air Vacuum With 12" Rigid PVC Tube.
Powerful one-piece aluminum vacuum that pulls up to six inches of mercury with a 12" rigid PVC tube. Removes objects such as sheet fasteners up to 3/4" diameter from confined spaces.



ATI560MF-12

Mina Vac – Replacement Parts



ATI560HD3

Does not include
ATI560A-4 clip

ATI560HD3 Mina - Vac - Heavy Duty Replacement Bag.
Heavy-duty nylon reinforced replacement bag for all ATI Mina-Vac systems.



ATI560A-3

ATI560A-3 Mina - Vac - Replacement Bag.
Replacement bag only, made from cotton flannel. Does not include the ATI560A-4 clip.



ATI560A-4

ATI560A-4 Mina-Vac-Replacement Clip For Bag.
Universal replacement clip only, does not include the Mina-Vac bag.

ATI560CF18



ATI560CF12 Mina - Vac - 12" Long Extension Flex Tube.
Clear PVC hose assembly for ATI560C and/or ATI560A Mina-Vac power unit sub-assembly.

ATI560CF18 Mina - Vac - 18" Long Extension Flex Tube.
Clear PVC hose assembly for ATI560C and/or ATI560A Mina-Vac power unit sub-assembly.

ATI560CF24 Mina - Vac - 24" Long Extension Flex Tube.
Clear PVC hose assembly for ATI560C and/or ATI560A Mina-Vac power unit sub-assembly.

ATI560CF36 Mina - Vac - 36" Long Extension Flex Tube.
Clear PVC hose assembly for ATI560C and/or ATI560A Mina-Vac power unit sub-assembly.



ATI560R10

ATI560R10 Mina - Vac - 12" Long Extension Gray Rigid Tube.
Rigid gray PVC hose assembly for ATI560C and/or ATI560A Mina-Vac power unit sub-assembly only. NSN #7910-01-227-4249



ATI560MRE12

ATI560MRE12 Mina - Vac - 12" Long Extension Clear Rigid Tube.
Rigid clear PVC hose assembly for ATI560M Mina-Vac power unit sub-assembly only.



ATI560MFE18

ATI560MFE12 Mina - Vac - 12" Long Extension Clear Flexible Tube.
Flexible clear PVC hose assembly for ATI560M Mina-Vac power unit sub-assembly only.

ATI560MFE18 Mina - Vac - 18" Long Extension Clear Flexible Tube.
Flexible clear PVC hose assembly for ATI560M Mina-Vac power unit sub-assembly only.

ATI560MFE24 Mina - Vac - 24" Long Extension Clear Flexible Tube.
Flexible clear PVC hose assembly for ATI560M Mina-Vac power unit sub-assembly only.

Cannon Plug Pliers



ATI508K

ATI508K Cannon Plug Plier.

Slip-joint handles and serrated replaceable plastic jaws, make installation and removal of electric connectors easier and safer. NSN #5120-01-370-6693



ATI508KG

ATI508KG Cannon Plug Plier With Grips.

Slip-joint handles with grips and serrated replaceable plastic jaws, make installation and removal of electric connectors easier and safer.

Cannon Plug Pliers Replacement Parts

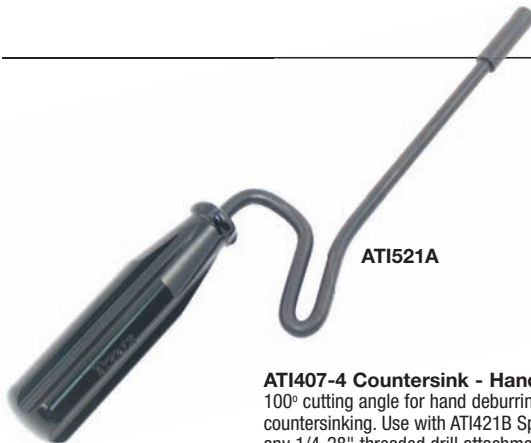


ATI508K-4

ATI508K-4 Cannon Plug Plier Pad Set.

Replaceable pads for ATI508K and ATI508KG. NSN #5120-00-157-3660

Speed Drivers – Deburring Tool & Cutters



ATI521A

ATI521A Deburring - Speed Driver.

The swivel handle allows for rapid deburring of drilled holes, uses the optional ATI521C deburring cutter.

ATI521B Threaded Spindle Deburring - Speed Driver.

The swivel handle allows for rapid deburring of drilled holes, has 1/4"-28 threaded spindle. Uses the ATI407 deburring cutter and ATI420, ATI445 and ATI455 family of cutters.

ATI407-4 Countersink - Hand Deburring.

100° cutting angle for hand deburring and countersinking. Use with ATI421B Speed Driver or any 1/4"-28" threaded drill attachment. NSN #5133-01-428-5671

ATI407-4

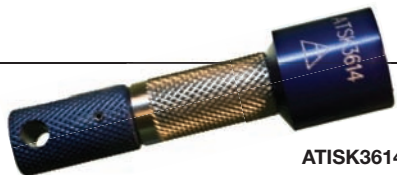


ATI521C

ATI521C Deburring Cutter.

Used in AT521A speed driver. 100-degree cutting angle, 3/8" body diameter, tip length 3/4", shank length 7/8", shank diameter 7/32".

Valve Core Removal Tool



ATISK3614

ATISK3614 Tire Valve Core Deflating Tool.

For rapid and safe tire deflation, this machined aluminum tool threads onto the valve stem, releases and traps the valve core within the tool and exhausts the tire air through ports, away from the technician, onto the wheel.

Ground Hole Burnishing Kit



ATSK3767-10

ATSK3767-10 Ground - Wire Hole Burnishing Kit #10.

Specifically designed to clean the surfaces surrounding holes for ground-wire attachment. Kit includes four burnishing pads, four extensions, one positive screw-in type burnishing head and one negative and positive collet-type burnishing head.

ATSK3767-20 Ground - Wire Hole Burnishing Kit #20.

ATSK3767-30 Ground - Wire Hole Burnishing Kit #30.

ATSK3767-40 Ground - Wire Hole Burnishing Kit #40.



WARNING

- Airframe tooling can cause flying chips.
- Wear safety goggles (user and bystanders).

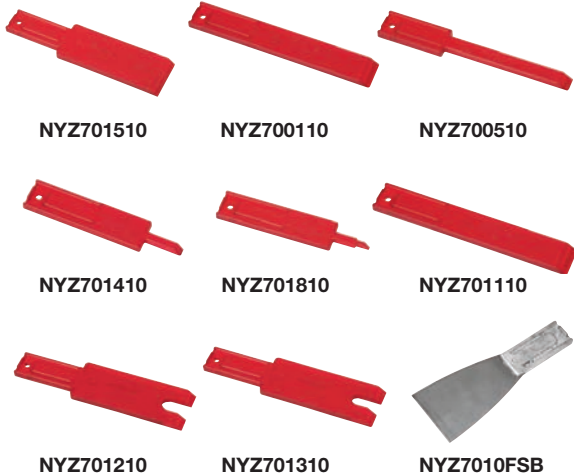


Mastic Removal Tools and Kits

NYROC™ is a proprietary engineered plastic specifically formulated for removing difficult to remove materials on delicate, fragile and scratch prone surfaces. NYROC™ blades were designed originally for removing stubborn mastics in aircraft fuel tanks and fuselages; an application where any damage to the underlying aluminum can be cause to permanently ground an aircraft. NYROC™ blades have a large variety of applications from automotive to industrial.

Applications

Automotive/Engine Repair, Body Shop, Aviation, Industrial and Marine. Visit www.snapon.com for complete application information.



NYZ701510

NYZ700110

NYZ700510

NYZ701410

NYZ701810

NYZ701110

NYZ701210

NYZ701310

NYZ7010FSB

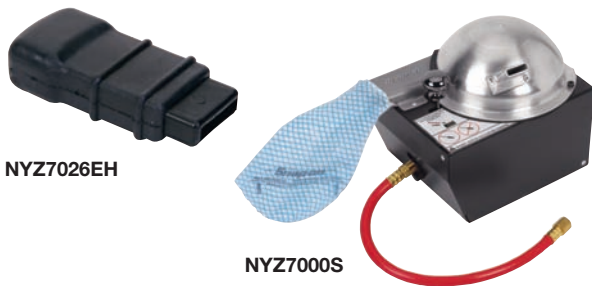
NYROC™ Blades

Blade Size	Description	Pack of 10	Pack of 200
1/8" wide	General Use	NYZ701810	NYZ7018200
1/4" wide	General Use	NYZ701410	NYZ7014200
1/2" wide	General Use	NYZ700510	NYZ7005200
3/4" wide	General Use	NYZ703410	NYZ7034200
1" wide	General Use	NYZ700110	NYZ7001200
1" wide	Button Head Rivet	NYZ701110	NYZ7011200
1 1/2" wide	General Use	NYZ701510	NYZ7015200
1 1/2" wide	Highlock for 1/4" high locks	NYZ701310	NYZ7013200
1 1/2" wide	Highlock for 3/8" high locks	NYZ701210	NYZ7012200

Blades available in 10 pack and 200 pack quantities only.

NYZ7010FSB Flexible Steel Blade

Flexible steel blades. Use with NYZ7026EH Rubber Handle. Available in package of 2 only.



NYZ7026EH

NYZ7000S

Accessories

NYZ7004VB Anti-Static Vacuum Bags. Anti-static vacuum bags for NYZ7000S Blade Sharpener. Pack of 10.

NYZ700AD Abrasive Sharpening Discs. Abrasive sharpening discs for NYZ7000S Blade Sharpener. Pack of 10.

NYZ7000S Pneumatic Blade Sharpener. Pneumatic powered sharpener quickly sharpens all NYROC™ blades up to 1" in width. Consistently sharpens blades to the optimal 51° angle. Operates with single push button. Connects directly to shop air. Removed material is collected in disposable anti-static vacuum bag attached directly to the discharge chute.

NYZ7026EH NYROC™ Blade Holder. The vulcanized rubber padded blade holder works exclusively with NYROC™ blades. Fits comfortably in the users hand, reduces operator fatigue and helps to prevent injury.



NYZ7000MDKIT

NYZ7007HD

Complete Kits

NYZ7000MDKIT Master Mastic Removal Kit

Save up to 80% of the time and labor involved to remove PRC and other mastics from every area of an aircraft without damage to the substrate. Speed controllable vibration gun permits infinitely variable job performance. The included pneumatic blade sharpener rapidly puts an edge on all NYROC blades up to 1" width right at the job site. Completely portable system is fully grounded and anti-static. Kit includes medium duty Vibro gun, pneumatic blade sharpener, (1) anti-static vacuum bag, (1) sharpening disc, (1) manual handle, (2) 1" NYROC™ blades, (2) 1/2" NYROC™ blades, (2) 1/4" NYROC™ blades, blade locks and connecting hoses in padded storage case.

NYZ7001MD Basic Mastic Removal Kit

Same as NYZ7000MDKIT but does not include medium duty Vibro gun.

NYZ7007HD Manual Mastic Removal Kit

The hand kit is ideal for aviation, automotive and industrial use especially for delicate jobs and limited access scraping applications. The NYROC™ blades are easily sharpened with sandpaper, small stone or optional pneumatic sharpener. Kit includes (6) 1" NYROC™ blades, (6) 1/2" NYROC™ blades, (3) 1/4" NYROC™ blades and (1) ergonomic rubber handle.



NYZ7025H50

NYZ7006MG

Guns and Hoses

NYZ7025H50 Air Hose (Anti-Static)

NONSTAT™ anti-static 1/4" hose is fully grounded to prevent static discharge. Hose is ideal for environments and projects where static control is essential. 50' long.

NYZ7024H100 Air Hose (Anti-Static)

Same as NYZ7025H50 except is 100' long.

NYZ7006MG Vibro Gun Kit

Kit includes medium duty Vibro gun, (1) 1" NYROC™ blade, (1) 1/2" NYROC™ blade, (1) 1/4" NYROC™ blade and (1) 1/8" NYROC™ blade plus blade locks in black kit bag. Medium duty Vibro gun adds pneumatic power to all scraping jobs using standard NYROC™ blades.



AVPW716



AFPW38

RELATED ITEMS

Riveting Tools, pg. 430



AOFW2

Aircraft Vacuum/Fuel Pump Wrenches

AVPW716 Aircraft Vacuum Pump Wrench. Removes and replaces vacuum pump flange nuts on aviation and experimental aircraft. Use with any 1/4" drive extension. Easily fits into tight areas between the pump and nearby accessories. The cut-down head design adds greater flexibility than a wrench with a bent shank.

Applications Include:

- Cessna: Skyhawk, Skylane, Stationair
- Piper: Cub, Warrior, Archer, Seminole, Aztec, Navaho, Chieftain
- Mooney: M20 series, M200 series, Ovation, Acclaim
- Beechcraft: Bonanza, Duchess, Baron
- Cirrus: SR20 and SR22

AFPW38 Aircraft Fuel Pump Wrench. The AFPW38 is a small crowfoot which will remove and install the fuel primer/injector line on Continental and Lycoming engines. Can be used with a 1/4" drive extension and will easily fit into tight areas.

Aircraft Oil Filter Wrench

AOFW2 Aviation Oil Filter Wrench. Oil filter wrench can be used for installing and removing oil filters on all standard general aviation aircraft with 1" hex oil filters. Compact size allows for reach in restricted areas. 3/8" drive torque wrench. Please refer to Snap-on® SS306G Torque Chart for formula to obtain the correct applied torque.

Safety Wiring



Wire Twisters

Cushion throat wire twisters feature a polyurethane filler that is bonded into the tool's cutter head to help prevent flying wire bits. A special undercut design helps maintain cutting edges and increases tool durability. Ideal for assembly line applications.



PR311



GA311C



WTRW6A



WT105-2004



WT105-2516



WTR1A



WT11B

Safety Wire

Stock No.	Wire Size, inches	Container
WT105-2004	.020	1/4 lb. Spool
WT105-3204	.032	1/4 lb. Spool
WT105-4204	.041	1/4 lb. Spool
WT105-2016	.020	1 lb. Canister
WT105-2516	.025	1 lb. Canister
WT105-3216	.032	1 lb. Canister
WT105-4116	.041	1 lb. Canister
WT105-5116	.051	1 lb. Canister

Wire Twister/Cutters

Stock No.	Description/Features	Wire Capacity, inches	Overall Length, inches	Wire Retainer
GA311C	Wide range of applications.	.060	10 1/2	No
PR311	Similar to GA311C, but not spring loaded. Right hand only with manual return.	.060	10 1/2	No
WT11B	Small size for use in tight quarters.	.041	8 1/2	No
WTR1A	Reversible wire twisters let you perform right and left hand twist with the same tool. Spring return and control knob.	.041	8 3/4	No
WTRW6A	Reversible Wire Twister. Perform right and left hand twist with the same tool. Spring return and control knob. TigerWave® Jaw captures and holds wire firmly.	.041	—	Yes